



# PPE & Welding Accessories

PERSONAL PROTECTION

WELDING TOOLS AND ACCESSORIES

SPECIAL PROCESS EQUIPMENT



**STRENGTH THROUGH COOPERATION**



# ***World***

Since 1904, ESAB has been both a pioneer and leader in welding and cutting development technology. Today ESAB combines world leadership with global applications expertise.

**STRENGTH THROUGH COOPERATION**



# *leader*

**in welding and cutting technology and systems**

With over 100 years of experience, and a presence in over 80 countries worldwide, ESAB is probably the most recognised brand in welding and cutting with a product portfolio, which includes:

**Standard Welding and Cutting Equipment**

**Automatic Equipment**

**Automated Cutting Equipment**

**Welding Consumables**

**Personal Protective Equipment (PPE)**

**Welding Accessories**

By continuously improving and developing our products and manufacturing processes, we meet the challenges of technological advance in every sector and market we operate in. Delivering quality products and services remains at the heart of everything we do across all our global sales and product operations.

# Contents



## Personal Protection

Helmets, Masks and Screens	4-22
Filter & Spatter Lenses	23
Hard Hats & Hearing Protection	24-25
Respiratory Equipment	26-35
Spectacles, Goggles & Visors	36-39
Welding Clothing and Coveralls	40-46
Head Protection	47
Welding Gloves	48-55
Safety Footwear	56



## Welding Tools & Accessories

Welding Curtains	58-59
Welding Blankets	60-61
Cables, Connectors and Electrode Holders	62-65
Clamps	65-67
Anti Spatter	68
Chemical Sundries and Indicators	69-70
Chipping Hammers	71-72
Fillet Gauges	72-73
Small Tools	73-75
Cylinder Trolleys	76



## Special Process Equipment

Drying Equipment	78-85
Tungsten Grinders	86-88
Tungsten Electrodes	88-89
Gouging Torches and Spares	90-93
Fume Extraction Units	94



# ***Personal Protection***

ESAB offer a comprehensive range of Personal Protection Equipment, covering everything from head to toe, for both welding and cutting and general engineering applications. All ESAB and ISO products conform to international standards and relevant EU legislation and standards.

As health and safety standards improve year on year, so does ESAB's commitment to providing a product portfolio capable of meeting the ever increasing demands of the markets we serve. As you would expect from a leading supplier of welding and cutting solutions, the ESAB product range is second to none for quality and reliability.

# Helmets, Masks & Screens

## Aristo® Tech

The Aristo® Tech helmet has been designed for the professional welder who wants the best in protection and performance. The light weight shell and ergonomically designed headgear offers maximum comfort even when welding for long periods of time. The Aristo® Tech offers the latest in digital lens technology, with internal LCD display, providing the welder full control to adjust shade level, sensitivity and delay settings with precision for any welding application.

### Lens Technology

- Variable 5-13 Digital control for adjustment of shade level, sensitivity and delay
- Optical Class 1/1/1
- Quick Set™ allows an easy change of shade by a simple up and down flick of the switch
- Grind mode activated at lowest sensitivity

### Comfort Head Gear

- Comfortable, lightweight and fully adjustable ratchet style headgear delivers maximum comfort

### Shell

- 3 high gloss colours available – yellow, black & white
- Conforms to:  
CE, ANSI, AS/NZS, CSA



**Helmet weighs only 490g**



ESAB's latest integrated Circuit LENS Technology, offers an internal LCD display with outstanding reliability, suitable for all manual welding processes, including plasma cutting.

- Digital Display Screen
- Lens Delay Control
- Visible Shade & Sensitivity Settings



Designed for use with a wide range of welding applications

# Helmets, Masks & Screens



## FRONT COVER LENS

The Aristo® Tech front cover lens offers the ultimate in Protection. This lens has been coated for increased scratch and heat resistance. Using a specialised injection moulding process, the lens is pre moulded into a convex curve with an optical class 1. This means that the threat of duplicate ghost Arcs visible through the cartridge is eliminated.



## HEAD GEAR

- Robust head gear
- Possibility to move the helmet closer or further away from the face
- Comfortable and replaceable sweat band
- Angled front head band



## AVAILABLE IN 3 HIGH GLOSS COLOURS

### Aristo® Tech Black

Painted black shell with yellow decal design.

Aristo® Tech 5-13 Black

0700 000 353



### Aristo® Tech Yellow

Painted yellow shell with black decal design.

Aristo® Tech 5-13 Yellow

0700 000 354



### Aristo® Tech White

Painted white shell with black and yellow decal design.

Aristo® Tech 5-13 White

0700 000 355

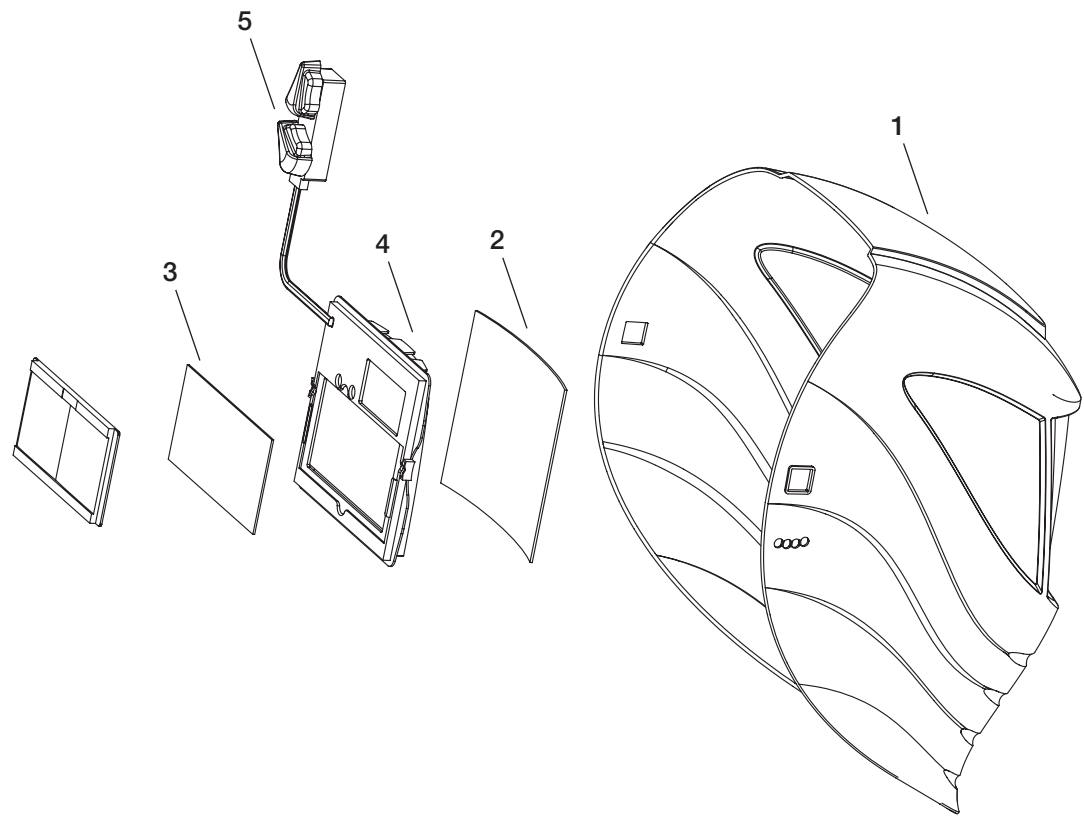
# Helmets, Masks & Screens

## Spares for Aristo® Tech 5-13 (Fig 1)

1	Helmet shell Aristo® Tech Yellow	0700 000 365
1	Helmet shell Aristo® Tech Black	0700 000 366
1	Helmet shell Aristo® Tech White	0700 000 367
*	Head gear	0700 000 368
*	Sweat band	0700 000 369
2	Front cover lens – Standard	0700 000 010
2	Front cover lens – Hard coated	0700 000 370
3	Inside cover lens	0700 000 371
4	Cartridge 5-13 assembly	0700 000 372
5	Potentiometer / Sensitivity knob	0700 000 373

\* Not shown

Spares for Aristo® Tech 5-13 Fig 1



## Aristo® Tech Magnifying Lenses

The Aristo® Tech can be equipped with a magnifying lens. The magnifying lens is fitted from the inside (so no adapter is needed). There are four different diopters available, +1,0 / +1,5 / +2,0 / +2,5.

Diopter +1,0 Aristo® Tech	0700 000 084
Diopter +1,5 Aristo® Tech	0700 000 085
Diopter +2,0 Aristo® Tech	0700 000 086
Diopter +2,5 Aristo® Tech	0700 000 087

# Helmets, Masks & Screens



# Helmets, Masks & Screens

## Aristo® Tech Combinations



### Aristo® Tech Helmets Prepared for Fresh Air

The Aristo® Tech helmet can be used in combination with the Aristo® Air PAPR unit and compressed air. The helmets are delivered fully assembled, incl. flame resistant head and face seal and air duct.

Aristo® Tech Black prepared for fresh air	<b>0700 000 356</b>
Aristo® Tech White prepared for fresh air	<b>0700 000 357</b>
Aristo® Tech Yellow prepared for fresh air	<b>0700 000 358</b>



### Aristo® Tech with Hard Hat

By removing the head harness and replacing it with a hard hat adapter (0700 000 230) the Aristo® Tech can be fitted on to ESAB's protective helmet. The combination is very well balanced and comfortable to wear. The Aristo® Tech helmet can be detached and reattached in a second. The specially designed hard hat meets the highest standards and it's equipped with ratchet adjustment. Conforms to EN 397.

Aristo® Tech Black	<b>0700 000 353</b>
Aristo® Tech White	<b>0700 000 354</b>
Aristo® Tech Yellow	<b>0700 000 355</b>
Hard Hat adapter for Aristo® Tech	<b>0700 000 230</b>
Hard Hat Concept Yellow	<b>0700 000 052</b>
Hard Hat Concept White	<b>0700 000 135</b>
Hard Hat Concept Blue	<b>0700 000 136</b>
Hard Hat Concept Green	<b>0700 000 137</b>
Hard Hat Concept Red	<b>0700 000 138</b>
Hard Hat Concept Orange	<b>0700 000 142</b>



Colours available



### Aristo® Tech with Internal Visor

The Aristo® Tech with internal visor is delivered with an air fed grade B impact protection grinding visor complete with a face and head seal. The grinding visor can be fitted in any of the standard Aristo® Tech helmets and can be combined with the Aristo® Air PAPR unit. This would be the ideal system for all applications involved in welding fabrication. One head system for welding and grinding.

Aristo® Tech Black with internal visor	<b>0700 000 359</b>
Aristo® Tech White with internal visor	<b>0700 000 360</b>
Aristo® Tech Yellow with internal visor	<b>0700 000 361</b>

# Helmets, Masks & Screens



## Aristo® Tech Helmets with Hard Hat Prepared for Fresh Air

All Aristo® Tech welding helmets can be used in combination with a hard hat (only black available) and Aristo® Air PAPR units. The helmets are delivered fully assembled, incl. hard hat with internal air duct and flame resistant head and face seal.

Aristo® Tech Black with hard hat prepared for fresh air	0700 000 362
Aristo® Tech White with hard hat prepared for fresh air	0700 000 367
Aristo® Tech Yellow with hard hat prepared for fresh air	0700 000 368

## Spares for Aristo® Tech Combinations

Head Seal for internal visor	0700 002 167
Face Seal for internal visor	0700 002 168
Spare Visor for internal visor	0700 002 169
Tear off visor for internal visor	0700 002 054
Head Seal for hard hat	0700 002 170
Face Seal for hard hat	0700 002 171
Hard Hat with internal air duct	0700 002 172

## Accessories for Aristo® Tech



## Aristo® Tech Magnifying Lenses

The Aristo® Tech can be equipped with a magnifying lens. The magnifying lens is fitted from the inside (so no adapter is needed). There are four different diopters available, +1,0 / +1,5 / +2,0 / +2,5.

Diopter +1,0 Aristo® Tech	0700 000 084
Diopter +1,5 Aristo® Tech	0700 000 085
Diopter +2,0 Aristo® Tech	0700 000 086
Diopter +2,5 Aristo® Tech	0700 000 087



## Aristo® Tech Hearing Protection

Hearing protection with neck support is available for the Aristo® Tech. SNR rating = 26 dB.

Hearing protection with neck support	0700 001 880
--------------------------------------	--------------

# Helmets, Masks & Screens

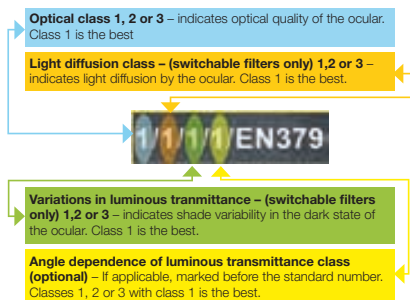
## New-Tech™ ADC Plus

The ADC plus is the second phase technology from the original New-Tech™ ADC range of welding helmets from ESAB, a market-leading supplier of welding related personal protection equipment. As a result of extensive research into typical application and user comfort requirements, the ESAB New-Tech™ ADC Plus cartridge offers new features, which make these new helmets unique.

The new 'Angular Dependence Compensation' Plus (ADC) ensures that the selected shade covers the full width and height of the LCD screen, whilst the addition of the Plus offers improved colour definition and contrast throughout the cartridge.

- Increased colour definition
- Lighter contrast
- External adjustable shade
- External adjustable sensitivity
- External delay adjustment
- Superb optical quality

1/1/1/1 EN379



**There are 3 helmets in the New-Tech™ ADC Plus range all offering superb performance and the ultimate in operator protection and comfort.**

New-Tech™ 9-13 ADC Plus

New-Tech™ 6-13 ADC Plus

New-Tech™ 6-13 XL ADC Plus



# Helmets, Masks & Screens



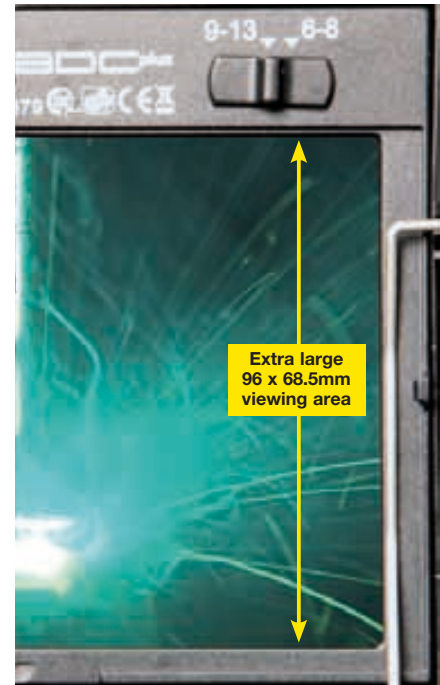
## The New-Tech™ ADC Plus Difference

### XL VIEWING AREA

The New-Tech™ 6-13 XL ADC Plus helmet offers an increased cartridge viewing area of 96 x 68.5mm.



STANDARD ADC PLUS SIZE

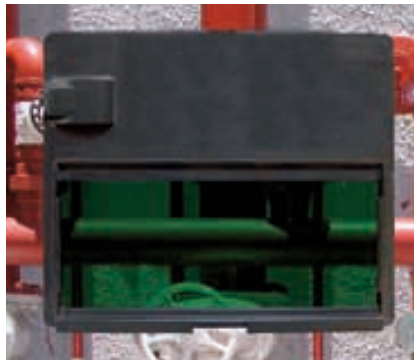


XL ADC PLUS SIZE

### OPEN STATE

#### ADC Plus Colour Definition

The ADC Plus range offers superior colour definition in both the open and activated state, allowing the welder to better see the LED displays on machines and equipment, whilst also identifying heat definition on the actual weld.



STANDARD NON ADC PLUS CARTRIDGE



ADC PLUS CARTRIDGE

### CLOSED STATE

#### ADC Plus Optical Quality

The ADC Plus cartridge boasts a 1/1/1 optical quality rating, which is the best on the market. This means that an even shade level is seen across the full height and width of the viewing area.

The benefits – an increased shaded area that covers the height and width of the cartridge, whilst reducing bright visible light.



STANDARD NON ADC PLUS CARTRIDGE



ADC PLUS CARTRIDGE

# Helmets, Masks & Screens



## New-Tech™ 6-13 XL ADC Plus

The New-Tech™ 6-13 XL can be used for almost any application. The shade level can be adjusted from DIN 6 to DIN 13, making this helmet very versatile. All settings are made from the outside of the helmet. The helmet features a grinding mode, where the cartridge can be switched off for grinding, there is also a sensitivity and delay function. The New-Tech™ 6-13 XL is equipped with ADC technology which will ensure a solid shade level even when viewing the lens at an angle, i.e. positional welding. Conforms to EN 175 and EN 379.

New-Tech™ 6-13 XL ADC Plus

**0700 000 955**



## New-Tech™ 6-13 ADC Plus

The New-Tech™ 6-13 can be used for almost any application. The shade level can be adjusted from DIN 6 to DIN 13, making this helmet very versatile. All settings are made from the outside of the helmet. The helmet features a grinding mode, where the cartridge can be switched off for grinding, there is also a sensitivity and delay function. The New-Tech™ 6-13 is equipped with ADC technology which will ensure a solid shade level even when viewing the lens at an angle, i.e. positional welding. Conforms to EN 175 and EN 379.

New-Tech™ 6-13 ADC Plus

**0700 000 956**



## New-Tech™ 9-13 ADC Plus

The New-Tech™ 9-13 ADC offers the latest ADC-technology which will ensure a solid shade level even when viewing the lens at an angle, i.e. positional welding. The settings, such as shade level DIN 9 to 13, sensitivity and delay, are made from the outside of the helmet. The New-Tech™ 9-13 is suitable for almost all applications, TIG, MIG/MAG, MMA and gas welding/cutting. Conforms to EN 175 and EN 379.

New-Tech™ 9-13 ADC Plus

**0700 000 957**

# Helmets, Masks & Screens



## Spares for New-Tech™ 6-13 XL ADC Plus (Fig 2)

1	Helmet shell New-Tech™	0700 000 269
2	Cartridge New-Tech™ 6-13 XL ADC Plus	0700 000 270
3	Adjustment knob kit	0700 000 223
4	Front cover lens New-Tech™ (90 x 110mm)	0700 000 227
4	Front cover lens CR39 New-Tech™ (90 x 110mm)	0700 000 139
5	Supporting frame New-Tech™	0700 000 220
6	Metal locking spring New-Tech™	0700 000 221
7	Inside cover lens New-Tech™ XL (107 x 71mm)	0700 000 268
8	Sweat band New-Tech™	0700 000 231
8	Sweat band New-Tech™ for Air	0700 000 271
9	Head gear complete New-Tech™	0700 000 222
*	Fresh air mounting kit for New-Tech™	0700 002 047

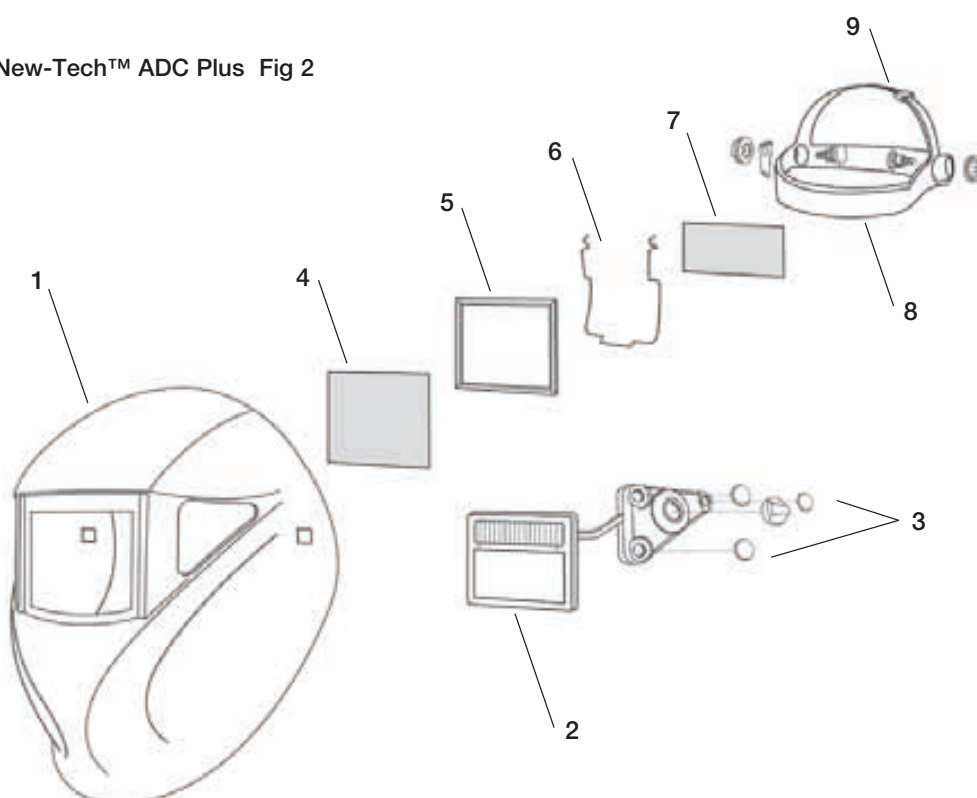
\* Not shown

## Spares for New-Tech™ 9-13 / 6-13 ADC Plus (Fig 2)

1	Helmet shell New-Tech™	0700 000 269
2	Cartridge New-Tech™ 9-13 ADC Plus	0700 000 273
2	Cartridge New-Tech™ 6-13 ADC Plus	0700 000 200
3	Adjustment knob kit	0700 000 223
4	Front cover lens New-Tech™ (90 x 110mm)	0700 000 227
4	Front cover lens CR39 New-Tech™ (90 x 110mm)	0700 000 139
5	Supporting frame New-Tech™	0700 000 220
6	Metal locking spring New-Tech™	0700 000 221
7	Inner cover lens New-Tech™ (50 x 110mm)	0700 000 228
8	Sweat band New-Tech™	0700 000 231
8	Sweat band New-Tech™ for Air	0700 000 271
9	Head gear complete New-Tech™	0700 000 222
*	Fresh air mounting kit for New-Tech™	0700 002 047

\* Not shown

## Spares for New-Tech™ ADC Plus Fig 2



# Helmets, Masks & Screens

## New-Tech™ Combinations



### New-Tech™ Helmets Prepared for Fresh Air

All New-Tech™ welding helmets can be used in combination with Aristo Air, Air 160, Air 200 and compressed air units. The helmets are delivered fully assembled, incl. flame resistant head and face seal and air duct. Follow three simple steps to make up your combination:

1. Select the New-Tech™ helmet package that you require.
2. Select the hose kit you require.
3. Select the air unit your require.

New-Tech™ 6-13 XL ADC Plus prepared for fresh air	<b>0700 000 954</b>
New-Tech™ 6-13 ADC Plus prepared for fresh air	<b>0700 000 284</b>
New-Tech™ 9-13 ADC Plus prepared for fresh air	<b>0700 000 285</b>



### New-Tech™ with Hard Hat

By removing the head harness and replacing it with a hard hat adapter (0700 000 230) the New-Tech can be fitted on to ESAB's protective helmet. The combination is very well balanced and comfortable to wear. The New-Tech™ helmet can be detached and reattached in a second. The specially designed hard hat meets the highest standards and it's equipped with ratchet adjustment. **1.** Select the New-Tech™ helmet. **2.** Select the hard hat adapter. **3.** Select the hard hat.

New-Tech™ 6-13 XL ADC Plus	<b>0700 000 305</b>
New-Tech™ 6-13 Plus ADC	<b>0700 000 280</b>
New-Tech™ 9-13 Plus ADC	<b>0700 000 281</b>
Hard Hat adapter for New-Tech	<b>0700 000 230</b>
Hard Hat Concept Yellow	<b>0700 000 052</b>
Hard Hat Concept White	<b>0700 000 135</b>
Hard Hat Concept Blue	<b>0700 000 136</b>
Hard Hat Concept Green	<b>0700 000 137</b>
Hard Hat Concept Red	<b>0700 000 138</b>
Hard Hat Concept Orange	<b>0700 000 142</b>



Colours available



### New-Tech™ with Internal Visor

The New-Tech™ with internal visor is delivered with an air fed grade B impact protection grinding visor complete with a face and head seal. The grinding visor can be fitted in any of the standard New-Tech™ helmets and can be combined with either the Aristo Air, Air 160, Air 200 or compressed air respiratory systems. This would be the ideal system for all applications involved in welding fabrication. One head system for welding and grinding. Follow three simple steps to make up your combination: **1.** Select the New-Tech™ helmet package that you require. **2.** Select the hose kit you require. **3.** Select the air unit your require.

New-Tech™ 6-13 XL ADC Plus with internal visor	<b>0700 000 310</b>
New-Tech™ 6-13 ADC Plus with internal visor	<b>0700 000 288</b>
New-Tech™ 9-13 ADC Plus with internal visor	<b>0700 000 289</b>

# Helmets, Masks & Screens



## New-Tech™ Helmets with Hard Hat Prepared for Fresh Air

All New-Tech™ welding helmets can be used in combination with a hard hat, Aristo Air, Air 160, Air 200 and compressed air units. The helmets are delivered fully assembled, incl. hard hat with internal air duct and flame resistant head and face seal. Follow three simple steps to make up your combination: **1.** Select the New-Tech™ helmet package that you require. **2.** Select the hose kit you require. **3.** Select the air unit your require.

New-Tech 6-13 XL ADC Plus prepared for fresh air + hard hat	<b>0700 000 311</b>
New-Tech 6-13 ADC Plus prepared for fresh air + hard hat	<b>0700 000 292</b>
New-Tech 9-13 ADC Plus prepared for fresh air + hard hat	<b>0700 000 293</b>

## Spares for New-Tech™ Combinations

Head seal for internal visor	<b>0700 002 051</b>
Face seal for internal visor	<b>0700 002 052</b>
Spare visor for internal visor (Pack of 20)	<b>0700 000 229</b>
Tear off visor for internal visor	<b>0700 002 054</b>
Head seal for hard hat	<b>0700 000 093</b>
Face seal for hard hat	<b>0700 000 094</b>
Hard hat with internal air duct	<b>0700 000 097</b>

## Accessories for New-Tech™



## New-Tech™ Magnifying Lenses

The New-Tech™ can be equipped with a magnifying lens. The magnifying lens is fitted from the inside (so no adapter is needed). There are four different diopters available, +1,0 / +1,5 / +2,0 / +2,5.

Diopter +1,0 New-Tech™	<b>0700 000 084</b>
Diopter +1,5 New-Tech™	<b>0700 000 085</b>
Diopter +2,0 New-Tech™	<b>0700 000 086</b>
Diopter +2,5 New-Tech™	<b>0700 000 087</b>



## New-Tech™ Hearing Protection

Hearing protection with neck support is available for the New-Tech. SNR rating = 26 dB.

Hearing protection with neck support	<b>0700 001 880</b>
--------------------------------------	---------------------

# Helmets, Masks & Screens

## Origo™ Tech 9-13

The Origo™ Tech helmet is available in two striking high gloss colours, 'Yellow' or 'Black'. The helmet features the ESAB comfort headgear, whilst the light weight shell offers superior face, head, ear & neck protection, which allows for welding in all positions. The ESAB variable shade ADF uses the latest technology and has proven reliability. The ADF is screw retained and sits in a fully moulded light seal cradle, which also creates a slight convex curve on the front spatter lens for extra security and strength. The Helmet is delivered in an ESAB display box, fully assembled and ready to use.



### Origo™ Tech 9-13

The Origo™ Tech 9-13 features an external shade adjustment between DIN 9 and DIN 13. The delay and sensitivity can be adjusted from the inside. The Origo™ Tech 9-13 is suitable for MIG/MAG, MMA and TIG (over 20 amps). Conforms to EN 175.

Origo™ Tech Black	0700 000 296
Origo™ Tech Yellow	0700 000 298



### Origo™ Tech with Hard Hat

By removing the head harness and replacing it with a hard hat adapter (0700 000 230) the Origo™ Tech can be fitted on to ESAB's protective helmet. The combination is very well balanced and comfortable to wear. The Origo™ Tech can be detached and reattached in a second. The specially designed hard hat meets the highest standards and is equipped with a ratchet adjustment.

1. Select the Origo™ Tech Helmet.
2. Select the hard hat adapter.
3. Select the hard hat colour.



Colours available

Origo™ Tech Black	0700 000 296
Origo™ Tech Yellow	0700 000 298
Hard Hat Concept Yellow	0700 000 052
Hard Hat Concept White	0700 000 135
Hard Hat Concept Blue	0700 000 136
Hard Hat Concept Green	0700 000 137
Hard Hat Concept Red	0700 000 138
Hard Hat Concept Orange	0700 000 142
Hard Hat Adaptor	0700 000 230

# Helmets, Masks & Screens



## Origo™ Tech 9-13 Prepared for Air

The Origo™ Tech 9-13 prepared for Air is delivered fully assembled and ready to attach to the Origo™ Air Unit. The unit includes: Origo™ Tech helmet, head gear, air duct & head and face seal.

Origo™ Tech 9-13 Prepared for Air Black	0700 000 300
Origo™ Tech 9-13 Prepared for Air Yellow	0700 000 301



## Origo™ Tech Prepared for Air Excluding ADF

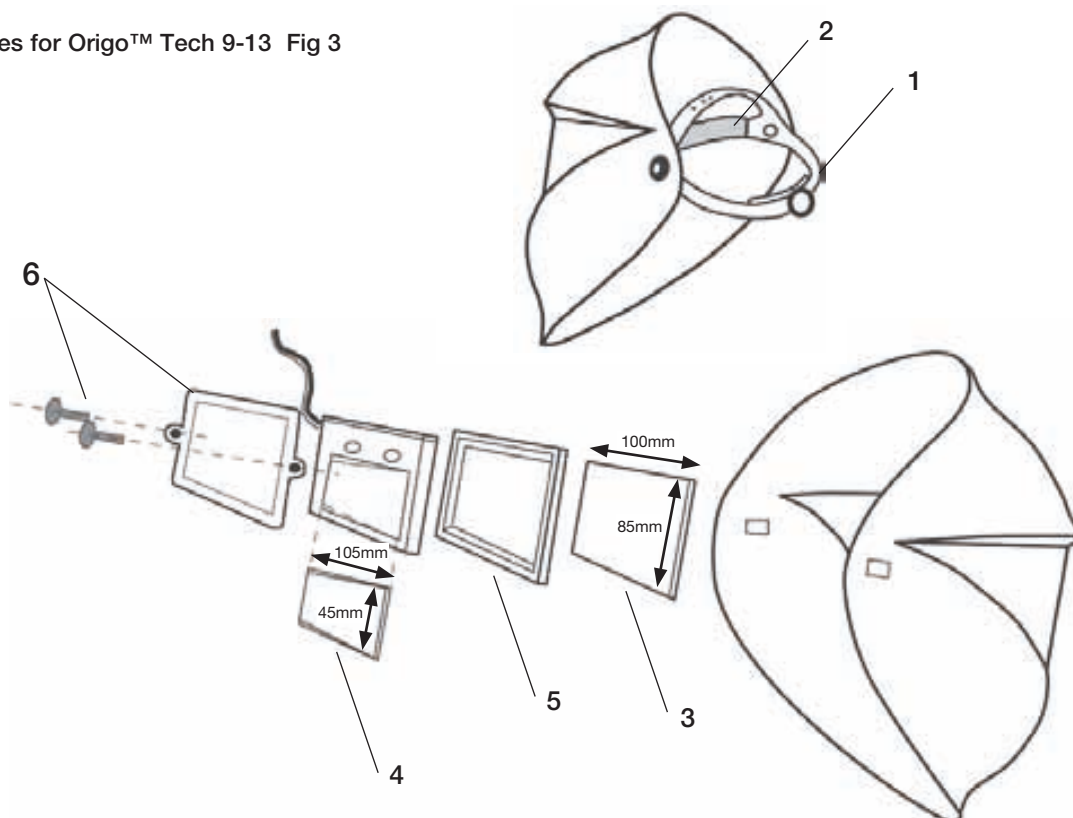
The Origo™ Air can be adapted to any standard Origo™ Tech helmet that has been previously purchased. We offer the Origo™ Tech helmet prepared for Air Excluding the ADF cartridge, this means the user must then remove the ADF from the existing helmet and fit it to the new shell to complete the system.

Origo™ Tech Shell Prepared for Air Excluding ADF Black	0700 000 302
Origo™ Tech Shell Prepared for Air Excluding ADF Yellow	0700 000 303

## Spares for Origo™ Tech 9-13 (Fig 3)

1	ESAB head gear pro	0700 000 243
2	Sweat band head gear pro (Pack of 2)	0700 000 244
2	Sweat band head gear prepared for air	0700 000 274
3	Front cover lens Origo™ Tech (85 x 100mm)	0700 000 245
4	Inside cover lens Origo™ Tech (105 x 45mm)	0700 000 246
5	ESAB 9-13 ADF cradle	0700 000 235
6	Lens retainer with screws	0700 000 237

Spares for Origo™ Tech 9-13 Fig 3



# Helmets, Masks & Screens

## Eco-Arc Welding Helmets

The new Eco-Arc is the latest design in flip front passive welding helmets. With a light weight Poly Propylene shell, and outstanding facial protection, the helmet is suitable for all position welding. Available in six different sized flip front options, the helmet also adopts the new Eco Headgear, with 4 rake positions and 3 longitudinal adjustment positions for precise nose to shell adjustment. The helmet is supplied complete with outer protection lens, shade 11 mineral glass and the unique large internal protection glass. Conforms to EN 175.



# Helmets, Masks & Screens



## Eco-Arc Helmets – Din 11

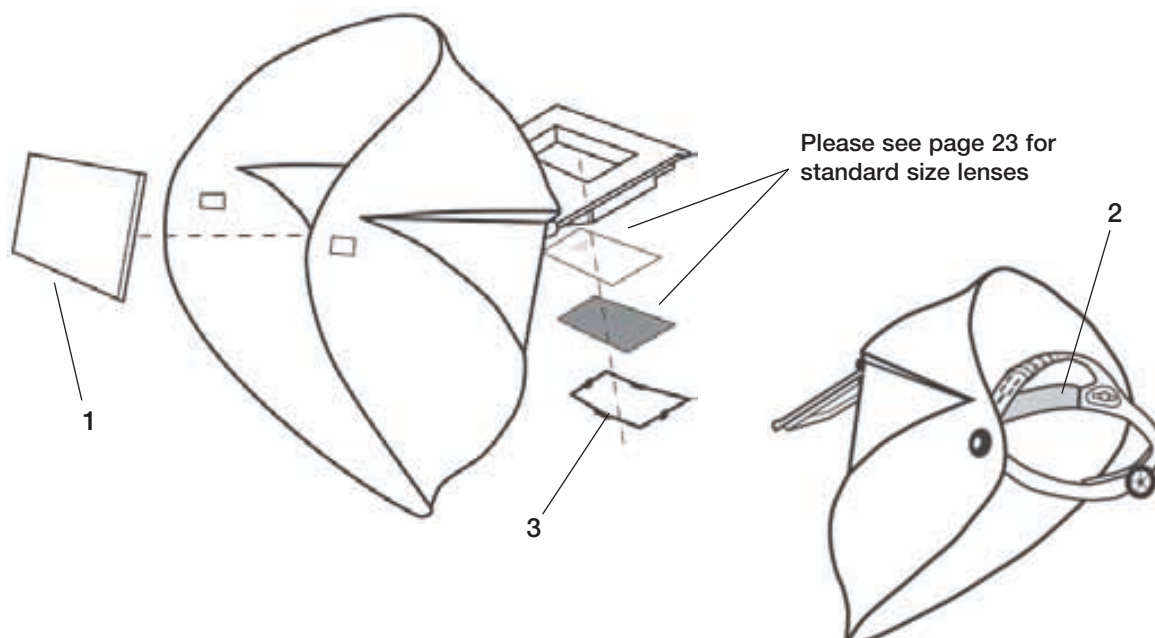
Eco-Arc 60 x 110 un-assembled - 20 pcs*	0700 000 938
Eco-Arc 60 x 110 individually packed	0700 000 950
Eco-Arc 90 x 110 un-assembled - 20 pcs*	0700 000 939
Eco-Arc 51 x 108 un-assembled - 20 pcs*	0700 000 940
Eco-Arc 83 x 108 un-assembled - 20 pcs *	0700 000 941
Eco-Arc 98 x 75 un-assembled - 20 pcs*	0700 000 942

\* This helmet is delivered with the head gear unattached.

## Spares for Eco-Arc Helmets (Fig 4)

1 Inside cover lens Eco-Arc	0700 000 252
2 Sweat band	0700 000 279
3 Lens retaining clip 60 x 110	0700 000 255
3 Lens retaining clip 90 x 110	0700 000 256
3 Lens retaining clip 98 x 75	0700 000 257
3 Lens retaining clip 83 x 108	0700 000 258
3 Lens retaining clip 51 x 108	0700 000 260

Spares for Eco-Arc Helmets Fig 4



# Helmets, Masks & Screens



## Euromask

Euromask is a helmet for welding and cutting that provides effective protection from UV and IR radiation. The visor must always be down when welding. The large field of vision provides effective protection for the eyes when grinding. Euromask can be combined with various IR and UV protectors. Also available with a protective helmet or prepared for use with a fresh air unit.

Euromask DIN 10 1.7 + 8 DIN	0000 500 501
Euromask DIN 11 1.7 + 10 DIN	0000 500 500
Euromask with protective helmet DIN 10	0349 501 913
Euromask with protective helmet DIN 11	0349 501 912
Euromask for protective helmet DIN 10	0000 500 502
Euromask for protective helmet DIN 11	0000 500 503
Euromask DIN 10 prepared for air	0700 000 901
Euromask DIN 11 prepared for air	0700 000 902
Air Hose	0468 127 011
Chin cover	0000 500 522
Visor DIN 5	0000 500 525
Visor DIN 8	0000 500 514
Visor Large DIN 8	0000 500 318
Visor DIN 10	0000 500 515
Visor large DIN 10	0349 501 088
UV protector clear (inner glass)	0000 500 526
UV protection DIN 1.7 (inner glass)	0000 500 512
UV protection DIN 3 (inner glass)	0000 500 513
UV protection DIN 5 (inner glass)	0000 500 524
Visor frame	0000 500 511
Head gear	0000 500 519
Spare part for head gear	0000 500 520
Hinge set for visor	0000 595 208
Face seal for fresh air helmet	0700 002 078



40mm

## ESAB Easy-Lite

The Easy-Lite is a small but effective light source, that can be easily attached to your welding helmet, hard hat, spectacle or anywhere that additional light is required. The Easy-Lite has also proven to be an excellent tool for adapting to a stainless steel inspection mirror, the bright LED is perfect for highlighting the weld in difficult places where there is insufficient light. The LED is turned on by a simple switch, and the battery has over 50 hours of life.

ESAB Easy-Lite – 20 per box

0700 014 040



# Helmets, Masks & Screens



## Leather Mask

This leather mask can be used when there is not enough space for welding with a conventional welding helmet. Glass size 90 x 110mm.

Leather mask	0000 593 221
--------------	--------------



## SF11 Helmet Short Shell

A traditional short shell helmet made from high performance glass fibre. Weight 600g. Lens aperture 108 x 83mm (4 1/4" x 3 1/4").

SF11	0700 654 889
Rubber glass holder Pk 5	0701 380 163
Helmet head band foam Pk 10	0701 380 214
Lens retaining nut Pk 5	0701 386 154
Helmet head band foam Pk 10 (white)	0701 415 838



## SF8 Lightweight Helmet

A lightweight thermoplastic helmet weighing 420g. Lens aperture 108 x 83mm (4 1/4" x 3 1/4").

SF8	0701 380 430
Rubber glass holder Pk 5	0701 380 163
Helmet head band foam Pk 10	0701 380 214
Lens retaining nut Pk 5	0701 386 154
Helmet head band foam Pk 10 (white)	0701 415 838



## Hand Screen E

A safe welding screen with replaceable welding glass, 60 x 110mm.

Hand Screen E	0332 109 880
---------------	--------------

# Helmets, Masks & Screens



## Hand Screen H

A safe welding screen that also protects the hand. Replaceable welding glass, size 60 x 110mm. Weight 330g.

Hand Screen H with clear and coloured glass

**0160 294 880**

*Does not include welding lens*



## Hand Screen Delta

Welding screen that protects the face as well as the hand. The window size is 90 x 110mm. Welding glass not included.

Hand Screen Delta

**0700 000 900**

*Does not include welding lens*



## Hand Screen SF12

Deep shell fibre glass screen. Weighs 525g. Lens aperture 108 x 83mm (4 1/4" x 3 1/4").

Hand Screen SF12

**0700 654 890**

*Does not include welding lens*



## Hand screen SF2

Flat fronted fibreglass hand screen. Weight 450g. Lens aperture 108 x 83mm (4 1/4" x 3 1/4").

Hand Screen SF2

**0700 655 002**

*Does not include welding lens*

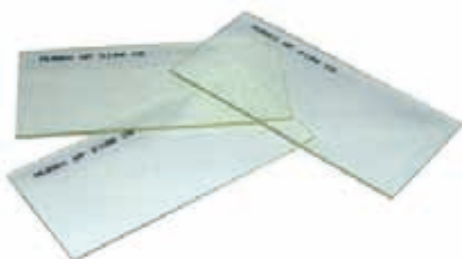
# Filter & Spatter Lenses



## Filter Lenses

Traditional glass filter lenses of excellent UV- and IR protection and thermal stability. Solid glass lenses are not robust and must be used with a polycarbonate backing lens and a glass- or plastic cover lens.

Filter Lens 98 x 75 shade 9 Pk 25	<b>0000 915 059</b>	Filter Lens 51 x 108 shade 9 Pk 25	<b>0760 031 601</b>
Filter Lens 98 x 75 shade 10 Pk 25	<b>0000 904 305</b>	Filter Lens 51 x 108 shade 10 Pk 25	<b>0760 031 602</b>
Filter Lens 98 x 75 shade 11 Pk 25	<b>0000 915 060</b>	Filter Lens 51 x 108 shade 11 Pk 25	<b>0760 031 603</b>
Filter Lens 98 x 75 shade 12 Pk 25	<b>0000 915 061</b>	Filter Lens 51 x 108 shade 12 Pk 26	<b>0760 031 604</b>
Filter Lens 98 x 75 shade 13 Pk 25	<b>0000 915 062</b>	Filter Lens 51 x 108 shade 13 Pk 25	<b>0760 031 605</b>
Filter Lens 60 x 110 shade 8 Pk 25	<b>0160 292 000</b>	Filter Lens 50mm Diameter shade 4	<b>0000 665 604</b>
Filter Lens 60 x 110 shade 9 Pk 25	<b>0160 292 001</b>	Filter Lens 50mm Diameter shade 5	<b>0000 665 605</b>
Filter Lens 60 x 110 shade 10 Pk 25	<b>0160 292 002</b>	Filter Lens 50mm Diameter shade 6	<b>0000 665 606</b>
Filter Lens 60 x 110 shade 11 Pk 25	<b>0160 292 003</b>	Filter Lens 8EW 108 x 83	
Filter Lens 60 x 110 shade 12 Pk 25	<b>0160 292 004</b>	(4 1/4" x 3 1/4") Pk 10	<b>0701 416 367</b>
Filter Lens 60 x 110 shade 13 Pk 25	<b>0160 292 005</b>	Filter Lens 9EW 108 x 83	
Filter Lens 90 x 110 shade 9 Pk 25	<b>0760 031 631</b>	(4 1/4" x 3 1/4") Pk 10	<b>0701 416 369</b>
Filter Lens 90 x 110 shade 10 Pk 25	<b>0760 031 632</b>	Filter Lens 10EW 108 x 83	
Filter Lens 90 x 110 shade 11 Pk 25	<b>0760 031 633</b>	(4 1/4" x 3 1/4") Pk 10	<b>0701 416 371</b>
Filter Lens 90 x 110 shade 12 Pk 25	<b>0760 031 634</b>	Filter Lens 11EW 108 x 83	
Filter Lens 90 x 110 shade 13 Pk 25	<b>0760 031 635</b>	(4 1/4" x 3 1/4") Pk 10	<b>0701 416 373</b>
Filter Lens 50 x 105 shade 9 Pk 25	<b>0590 028 216</b>	Filter Lens 12EW 108 x 83	
Filter Lens 50 x 105 shade 10 Pk 25	<b>0590 028 217</b>	(4 1/4" x 3 1/4") Pk 10	<b>0701 416 375</b>
Filter Lens 50 x 105 shade 11 Pk 25	<b>0590 028 218</b>	Filter Lens 13EW 108 x 83	
Filter Lens 50 x 105 shade 12 Pk 25	<b>0590 028 219</b>	(4 1/4" x 3 1/4") Pk 10	<b>0701 416 376</b>
Filter Lens 50 x 105 shade 13 Pk 25	<b>0590 028 220</b>	Filter Lens 55 x 110	<b>0700 000 251</b>



## Cover Lenses

A suitable cover lens must be used to protect the filter lens from spatter and damage.

Cover Lens 60 x 110 glass Pk 25	<b>0291 102 701</b>
Cover Lens 60 x 110 plastic Pk 100	<b>0160 307 001</b>
Cover Lens 90 x 110 glass Pk 100	<b>0760 031 040</b>
Cover Lens 90 x 110 plastic Pk 100	<b>0160 307 004</b>
Cover Lens 51 x 108 glass Pk 25	<b>0760 031 010</b>
Cover Lens 51 x 108 plastic Pk 100	<b>0160 307 002</b>
Cover Lens 50 x 105 glass Pk 100	<b>0590 028 221</b>
Cover Lens 50 x 105 plastic Pk 100	<b>0590 028 222</b>
Cover Lens 98 x 75 glass Pk 100	<b>0000 915 058</b>
Cover Lens 98 x 75 plastic Pk 100	<b>0000 915 097</b>
Cover Lens 108 x 83 (4 1/4 x 3 1/4) glass Pk 10	<b>0701 416 341</b>
Cover Lens 108 x 83 (4 1/4 x 3 1/4) plastic Pk 10	<b>0701 416 332</b>
Cover Lens Diameter 50mm glass Pk 50	<b>0000 665 600</b>
Cover Lens Diameter 50mm plastic Pk 50	<b>0000 665 618</b>

### CR 39 Cover lenses

Cover Lens CR39 108 x 51 (4 1/4 x 2) Pk 10	<b>0701 416 348</b>
Cover Lens CR39 108 x 51 (4 1/4 x 2) Pk 100	<b>0701 416 349</b>
Cover Lens CR39 108 x 83 (4 1/4 x 3 1/4) Pk 10	<b>0701 416 350</b>
Cover Lens CR39 108 x 83 (4 1/4 x 3 1/4) Pk 100	<b>0701 416 351</b>
Cover Lens CR39 60 x 110 Pk 10	<b>0701 416 352</b>
Cover Lens CR39 90 x 110 Pk 10	<b>0700 000 139</b>

# Hard Hats & Hearing Protection

## Air Fed Grinding Visors



### Grinding and Spraying Helmet for Air

The system consist of a hard hat combined with a flip up polycarbonate visor. Air is feed into the head piece via an air hose from the air unit. ESAB offer visor covers to protect and increase the life of the visor.

Grinding/spraying helmet incl hose	0701 416 189
------------------------------------	--------------

#### Spares for grinding/spraying helmet

Replacement visor clear	0701 416 233
Replacement visor DIN5 green	0701 500 000
Visor covers	0701 416 182
Face seal	0701 416 234
Hearing protection	0701 416 200
Brow guard and arms	0700 002 056
Hard hat with air duct	0700 000 097



### Grinding visor for Air 160/200/CA

Filtered air is ducted from the Power Unit or Regulator up a spiral reinforced PVC hose, and into an air channel. The air is directed into the top of the visor area maximising anti misting around the breathing zone. The visor can be combined with either Air 160/200/CA or compressed air.

Air fed grinding visor including hose 850mm	0700 002 915
---	--------------

#### Spares for Grinding visor for Air

Face seal	0700 002 057
Head seal	0700 002 058
Replacement visor	0700 002 059

# Hard Hats & Hearing Protection



Colours available

## Hard Hat Concept

The Hard Hat Concept provides the user with the lightest, strongest and most comfortable helmet available. The helmet is manufactured from ABS material and weighs only ~300g. The head gear is equipped with a ratchet adjustment for easy adjustment and comfort. Approved to EN 397. Compatible with Aristo® Tech, New-Tech™, Origo™ Tech, Albatross and Globe-Arc helmets.

Hard Hat Concept Yellow	0700 000 052
Hard Hat Concept White	0700 000 135
Hard Hat Concept Blue	0700 000 136
Hard Hat Concept Green	0700 000 137
Hard Hat Concept Red	0700 000 138
Hard Hat Concept Orange	0700 000 142
Head Harness Concept	0700 000 141
Sweat Band for Hard Hat	0700 000 140



## Helmet Spacer Kit

The ESAB helmet spacer kit has been designed to increase the width of the shell from the headgear allowing a pair of Ear defenders to be worn under the helmet. The spacer adapts to all ESAB welding helmets.

Helmet Spacer kit	0700 001 004
-------------------	--------------



## Hearing Protection

ESAB's hearing protectors are available in three different versions; One that can be attached to a protective helmet, one with neck support, one with head support. All of these provide effective protection at different decibel levels.

Hearing protector with neck support, SNR 26 dB	0700 001 880
Hearing protector with head support, SNR 26 dB	0000 595 199
Hearing protector for G2000c, yellow SNR 26 dB	0367 420 003
Economy ear defender SNR 21 dB	0701 380 477

# Respiratory Equipment

## Why use PAPR (Powered Air Purifying Respirator)

The welding fume generated from the open arc welding process contains airborne particles released from the consumables and the material being welded. More than 90% of the fume arises from vaporisation of the consumable electrode, wire or rod as material is transferred across the arc or flame. Welding fume particles can be hazardous as they can penetrate the innermost parts of the lungs.

Long term exposure to welding fumes may affect the body's respiratory system, for example through substance inhalation and release into the blood system.

ESAB recommends the use of powered air purifying respirators (PAPR) in combination with ESAB's welding helmet. PAPR units operate by filtering the air through a battery powered unit, which is then supplied into the breathing zone inside the helmet.

ESAB PAPR systems are fitted with a P3 main filter which, if used correctly, can filter out up to 99.8%.

The PAPR should always be used, cleaned, inspected and maintained in accordance with the operating and maintenance instructions provided. A risk assessment should be carried before use to ensure the PAPR system is suitable for the risks involved, the conditions at the place where exposure to the risk may occur, and the period for which it is worn, taking into account the state of health of the person who may wear the equipment, the work to be undertaken and the work environment.



## Aristo® Air

The Aristo® Air PAPR (Powered Air Purifying Respirator) system combined with the Aristo® Tech helmet, offers heavy duty protection from welding fume and dust when welding, gouging & grinding. The unit features the latest in PCB Board technology, allowing the welder to adjust the air flow from 170 L/min to 210 L/min to suit the environment and application. This is highlighted by an LED airflow indicator on top of the unit. The Aristo® Air is equipped with audio & visual blocked filter and low battery alarms, offering extra safety for the welder.

The strong physical construction of the Aristo® Air, makes it extremely robust and suitable for all heavy duty welding applications.

- User adjustable air flow 170/210 L/min
- Li Ion battery pack  
(up to 8hr duration @ 210L/min)
- P3 filter and pre-filter
- International intelligent charger  
(interchangeable pins)
- Audio/visual blocked filter and low battery alarms
- LED air flow indicator
- Battery charge LED indicator
- Flat push button membrane switch
- Supplied with 'new style' comfort pad



**Weights only 1kg**



**Available  
end of 2011**



### Aristo® Air

The Aristo® Air PAPR unit is delivered complete and is ready to use. Contents include: Air unit with air hose and hose cover, battery, intelligent charger, comfort pad and P3 filter.

Aristo® Air Complete

**0700 002 174**

# Respiratory Equipment



**Available  
end of 2011**

## Eco Air

The Eco Air powered respiratory systems provides 170 litres of clean/filtered air per minute to give a more pleasant working environment. The unit only weighs 1kg but will still withstand the toughest of environments. The unit is supplied with a P3 filter with an extraordinary filtration capacity. The battery, which have an operating capacity of 8 hours, can be charged separate from the motor unit, hence it can be utilised when working double shifts. The Eco Air is equipped with an Audio low flow alarm and indicates when the battery is running low or when the filter is blocked. The Buddy™ Air can be used together with Aristo® Tech.

---

Eco Air Complete (EU and UK) including air hose

**0700 002 175**

---



## Origo™ Air

The Origo™ Air is a battery powered respiratory unit is designed to fit the Origo™ Tech, Globe Arc and Albatross welding helmets. The unit provides clean/filtered air to increase the comfort and safety for the welder. The Origo™ Air is delivered complete with an 8-hour battery, P3 filter, comfort pad, waist belt and an air hose with a Proban hose cover fitted. This unit is supplied with an intelligent charger, which ensures a prolonged life time of the battery, by reducing the risk of over charging. The Origo™ Air is equipped with a low flow alarm, which will give an audible signal when the filter is blocked or the battery power is running low. The complete system is comfortable, lightweight and durable.

---

Origo™ Air Complete (EU and UK) including air hose

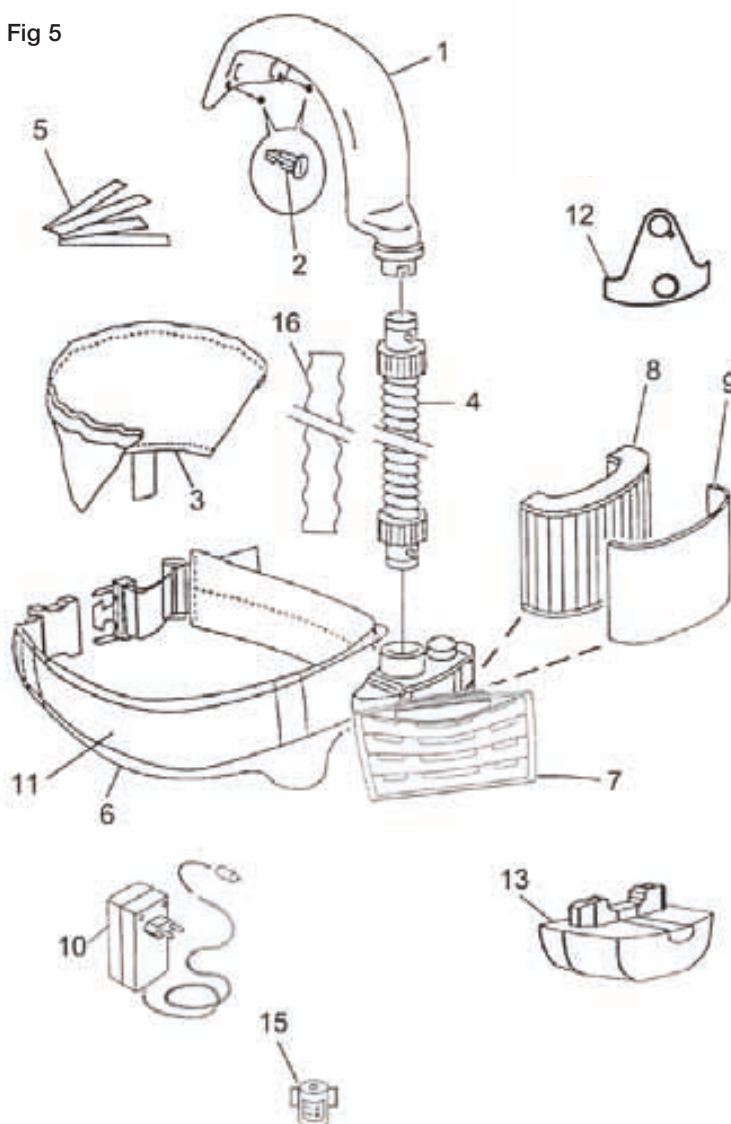
**0700 002 100**

---

## Spares for Aristo® Tech Air (Fig 5)

1	Air channel	0700 002 002
2	Screws for air channel	0700 002 028
3	Head seal Aristo® Tech	0700 002 160
4	Air hose	0468 127 011
4	Air hose 1m	0700 002 055
4	Air hose heavy duty	0700 002 081
6	Comfort pad Aristo® Air	0700 002 162
7	Aristo Air door	0700 002 166
8	P3 filter	0700 002 024
8	P2 filter	0700 002 018
8	P2 filter carbon	0700 002 041
9	Pre filter Pk 5	0700 002 023
9	Carbon pre filter Pk 10	0700 002 040
10	Intelligent charger Aristo® Air	0700 002 165
11	Waist belt	0700 002 027
12	Holder for air channel	0700 002 029
13	Battery Aristo® Air	0700 002 164
16	Proban hose cover	0349 501 071
*	Aristo Air motor unit	0700 002 164

Spares for Aristo® Air Fig 5

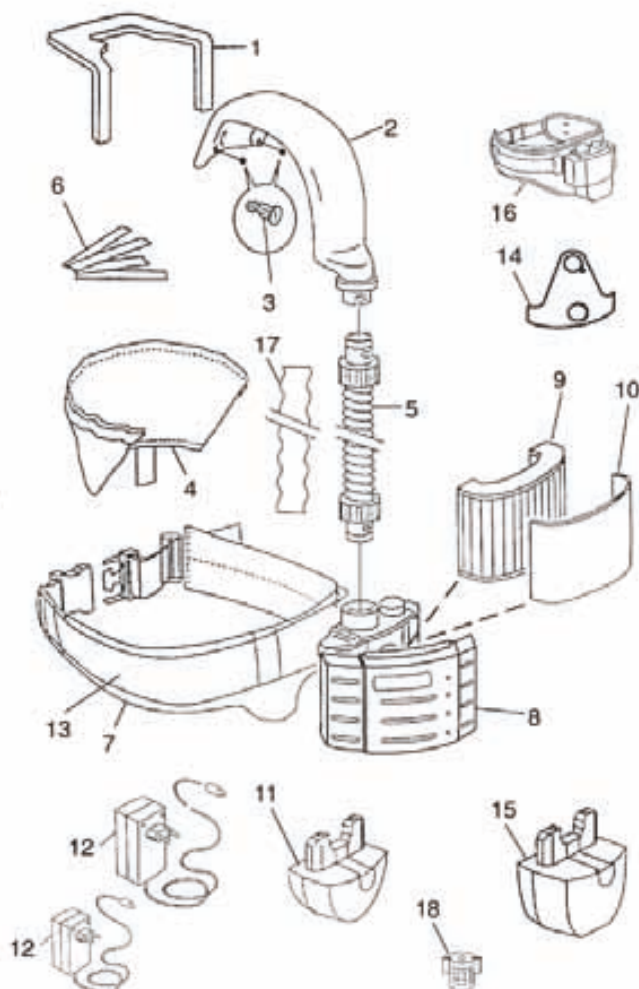


# Respiratory Equipment

## Spares for Eco Air (Fig 6)

1	Head seal New-Tech	0700 002 048	10	Carbon Pre filter Pk 10	0700 002 040
2	Air channel	0700 002 050	11	Battery small Eco Air - 360g	0700 002 013
3	Screws for air channel	0700 002 028	12	Battery charger small 2 Pin (EU)	0700 002 020
4	Face seal New-Tech	0700 002 049	12	Battery charger small 3 Pin (UK)	0700 002 044
5	Air hose New-Tech	0468 127 011	12	Battery charger large 2 Pin (EU)	0700 002 031
5	Air hose New-Tech 1m	0700 002 055	12	Battery charger large 3 Pin (UK)	0700 002 045
5	Air hose New-Tech - Heavy Duty	0700 002 081	12	Intelligent charger	0701 416 203
5	Air hose Albatross	0700 002 032	12	Five way intelligent charger	0701 416 136
7	Comfort pad standard	0700 002 021	13	Waist belt	0700 002 027
7	Comfort pad large	0700 002 022	14	Holder for air channel	0700 002 029
8	Eco Air motor unit	0700 002 042	15	Battery large Eco Air - 580g	0700 002 014
9	P3 filter	0700 002 024	16	Eco Air complete (EU)	0700 002 926
9	P2 filter	0700 002 018	16	Eco Air complete (UK)	0700 002 954
9	P2 filter carbon	0700 002 041	17	Proban hose cover	0349 501 071
10	Pre filter Pk 5	0700 002 023		Back plate (not shown)	0701 502 396

Spares for Eco Air Fig 6



## (COMPATIBLE MOUNTING KIT)

ESAB offers a compatible mounting kit for the New-Tech™. This allows the helmet to be adapted to either the Eco Air, Aristo® Air.

Mounting kit New-Tech™ **0700 002 047**  
(Face seal, velcro, head seal, air channel)

# Respiratory Equipment



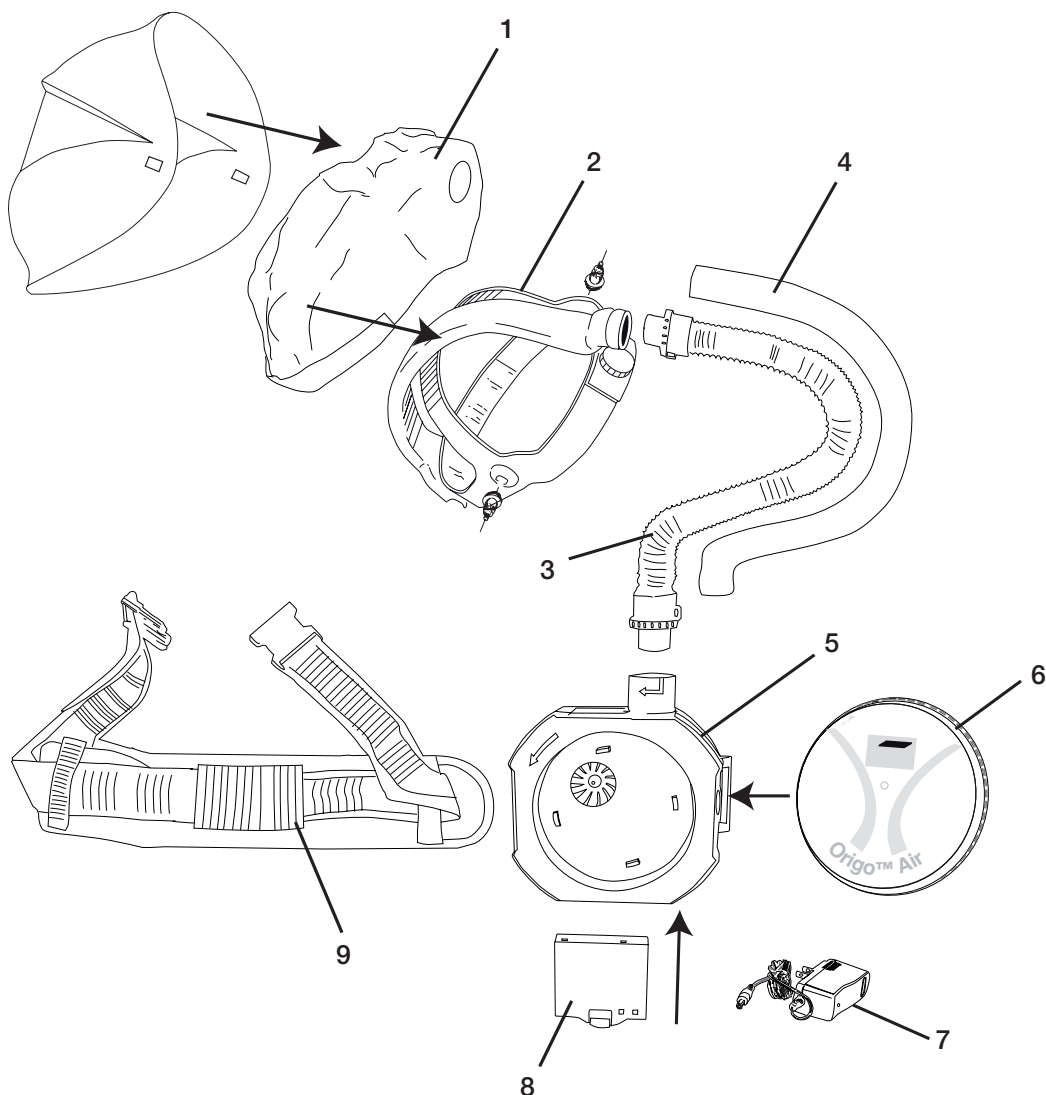
## Spares for Origo Air (Fig 7)

1	Face seal	0700 002 101
2	Air duct including head gear	0700 002 102
3	Air hose	0700 002 103
4	Proban hose cover	0700 002 104
5	Motor unit	0700 002 105
6	Filter	0700 002 106
7	Charger adapter	0700 002 107
8	Battery	0700 002 108
9	Waist belt	0700 002 109
*	Sweat band Origo Tech x 2Pc	0700 000 274



\* Not shown

## Spares for Origo Air Fig 7



# Respiratory Equipment

## ESAB Compressed Air Systems (CA)



### ESAB Air CA

The waist mounted regulator is pre-set to reduce the air from high to low pressure and has integral low flow warning alarm. The unit is encased to protect the regulator. The regulator is delivered with an air supply connector which connects the air hose to the regulator. The unit is supplied complete with waist belt. The maximum input working pressure is 10 bar (145 psi).

ESAB Air CA regulator & air supply connector  
Airline 10 meters

**0349 501 072**  
**0701 416 188**



### ESAB Compressed Air Filtration Bank

The filter system consists of three filtration units which will remove liquids, solid contaminants, oil vapour and odours from the compressed air supply and provides clean breathing air to the operators. The filtration bank should be used when a clean air supply is not available. The units are fitted with 1/4" (6,4mm) input hose tail adapter, a 0,5-10 bar adjustable regulator, twin output 'quick-snap' style hose connectors for 1 or 2 operators and a gauge as a guide to output pressure. The filtration bank can be supplied for wall mounting or on a portable frame.

Filtration bank framed  
Filtration bank wall mounted

**0701 416 183**  
**0701 416 184**

### Spares filters for Filtration Bank

1. Prefilter
2. Coalescing filter
3. Charcoal filter

**0701 416 185**  
**0701 416 186**  
**0701 416 187**

## Filtair Disposable Masks

The ESAB Filtair series has been developed to improve the comfort of disposable respirators whilst maintaining an excellent face fit. Colour coding the range makes identification simple when varying levels of protection may be required. The mesh shell supports the filter media and prevents collapse onto the face and the preformed nose bridge provides comfortable fit eliminating constant adjustment. The filters use the latest filter technology to promote low breathing resistance and are approved to EN149:2001 (meeting the 120mg load testing). The Filtair is available as a pre-moulded and a flat version. Depending on the protection level needed and the breathing resistance some models are equipped with a valve. All the masks are fitted with buckle fastening which also allows the wearer to adjust the straps accordingly.



# Respiratory Equipment

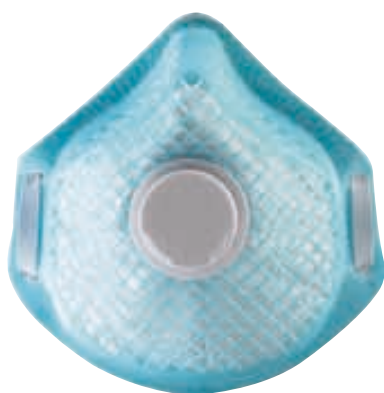


## ESAB Filtair Pro 8010

This mask provide P1 protection and is suitable to wear during general dusty duties.

ESAB Filtair Pro P1 'White' Pk 20

**0700 002 200**



## ESAB Filtair Pro 8020V

This mask provide P2 protection and is equipped with a valve to reduce heat and moisture build up inside the respirator. Suitable to wear when sanding painted metals, powder coating and sanding cured resins.

ESAB Filtair Pro P2V 'Blue' Pk 10

**0700 002 201**



## ESAB Filtair Pro 8020CV

This mask provide P2 protection and is equipped with a valve to reduce heat and moisture build up inside the respirator. The carbon layer takes out bad odours. Suitable to wear during welding, brazing, soldering, painting (brush applied), gluing (brush applied) and polyester resins (hand mix).

ESAB Filtair Pro P2CV 'Grey' Pk 5

**0700 002 202**



## ESAB Filtair Pro 8030V

This mask provide P3 protection and is equipped with a valve to reduce heat and moisture build up inside the respirator. Suitable to wear during molten metal handling, welding, machining, grinding, polishing and finishing.

ESAB Filtair Pro P3V 'Orange' Pk 5

**0700 002 203**

# Respiratory Equipment

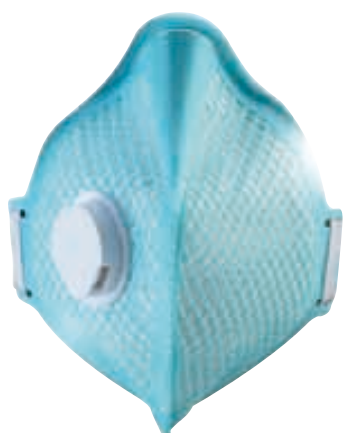


## ESAB Filtair Flat A-1

This mask provide P1 protection and is suitable to wear during general dusty duties.

ESAB Filtair Flat P1 'White' Pk 20

**0700 002 204**



## ESAB Filtair Flat A-2V

This mask provide P2 protection and is equipped with a valve to reduce heat and moisture build up inside the respirator. Suitable to wear when sanding painted metals, powder coating and sanding cured resins.

ESAB Filtair Flat P2V 'Blue' Pk 20

**0700 002 205**



## ESAB Filtair Flat A-2CV

This mask provide P2 protection and is equipped with a valve to reduce heat and moisture build up inside the respirator. The carbon layer takes out bad odours. Suitable to wear during welding, brazing, soldering, painting (brush applied), gluing (brush applied) and polyester resins (hand mix).

ESAB Filtair Flat P2CV 'Grey' Pk 20

**0700 002 206**



## ESAB Filtair Flat A-3V

This mask provide P3 protection and is equipped with a valve to reduce heat and moisture build up inside the respirator. Suitable to wear during molten metal handling, welding, machining, grinding, polishing and finishing.

ESAB Filtair Flat P3V 'Orange' Pk 20

**0700 002 207**

# Spectacles, Goggles & Visors

## ESAB Pro Safety Spectacles

These stylish spectacles are used for drilling, chipping and metalworking. They have a sporty style, soft to the touch, and have a lightweight wrap around, including a neck cord. They are extremely flexible and durable, and are available in four different lens configurations. All lens configurations provide protection against dangerous UV radiation. CE approved according to EN 166-F. There are 10 pairs packed per box. Not for grinding.



### ESAB Pro Clear

The clear lens is suitable when working indoors, providing general eye protection.

ESAB Pro Clear

0700 012 013



### ESAB Pro Smoked

The smoked lens is suitable when working in strong ambient light.

ESAB Pro Smoked

0700 012 014



### ESAB Pro Amber

The Amber (yellow lens) enhances the light. This is suitable when the ambient light is not sufficient.

ESAB Pro Amber

0700 012 015



### ESAB Pro Shade 5

The shade 5 spectacle provide protection not only against IR/UV light but also against the visible light during gas welding/cutting.

ESAB Pro Shade 5

0700 012 016

# Spectacles, Goggles & Visors



## ESAB Eco Safety Spectacles

These stylish spectacles are used for drilling, chipping and metalworking, they have a sporty style and are extremely lightweight. Available in three different lens configurations. All lens configurations provide



### ESAB Eco Clear

The clear lens is suitable when working indoors, providing general eye protection.

ESAB Eco Clear

0700 012 017



### ESAB Eco Smoked

The smoked lens is suitable when working in strong ambient light.

ESAB Eco Smoked

0700 012 018



### ESAB Eco Amber

The Amber (yellow lens) enhances the light. This is suitable when the ambient light is not sufficient.

ESAB Eco Amber

0700 012 019

# Spectacles, Goggles & Visors



## ESAB Visitor Spectacle

ESAB Visitor spectacle protects the eye from flying particles. The lenses are made of impact-resistant polycarbonate. The spectacles (frames & lenses) are certified to EN 166:2001.

ESAB Visitor Spectacle

**0700 012 021**



## ESAB Goggle Clear

The special injected frame offers supreme user comfort as well as durability. Expanded Visual field. Cross Vent technology keeps air flowing in and moisture out. Moulded 2mm poly carbonate lens provides great impact protection. These goggles meet ANSI Z87.1+ impact standard and is CE certified to EN166'S'.

ESAB Ski Goggle Clear

**0700 012 027**



## ESAB Goggle Shade 5

The special injected frame offers supreme user comfort as well as durability. Expanded Visual field. Cross Vent technology keeps air flowing in and moisture out. Moulded 2mm poly carbonate lens provides great impact protection. These goggles meet ANSI Z87.1+ impact standard and is CE certified to EN166 and EN169.

ESAB Ski Goggle Shade 5

**0700 012 026**



## ESAB Goggle

Provides protection against liquid splashes, dusts and spatter.

ESAB Chemical Goggle

**0700 012 025**

# Spectacles, Goggles & Visors



## Grinding Visor Complete

A strong lightweight brownguard featuring an adjustable head harness and clear polycarbonate screen.

Grinding Visor Complete  
Replacement Visor Clear

0700 012 020  
0700 012 023



## ESAB Flip Front Goggle Round Shade 5

Protective goggle shade 5 for gas welding, brazing and gas cutting. The goggles are ventilated and have a flip-front mechanism. CE approved according to EN 166/EN 175.

ESAB Flip Front Goggle, Shade 5

0700 012 022



# Welding Clothing

## Clothing and Workwear

Whatever your welding clothing requirements, ESAB can offer you a high performance range of welding garments suitable for any welding environment. With a great choice of traditional leather or high specification, Phoenix FR® inherently flame retardant fabrics, ESAB's product experts have developed a superior range of multi-risk garments to meet the demands of the welder.

### New Phoenix FR®

ESAB is proud to introduce the very latest technology in inherent flame retardant garments. In many industries workers face a complex mix of safety hazards, yet most protective fabrics protect from one or two hazards only. For this reason, employers in the past have been forced to compromise on safety. Not any more.



Phoenix FR® is proven to protect from flame, weld spatter, heat and electric arc explosion. Its' unique molecular structure means that the flame-resistant properties are inherent and therefore, permanent. This technology is the result of a four year development programme and ensures that all our Phoenix FR® range exceed the very latest ISO international standards.



ISO EN 11612 Flame Retardance



EN 1149 - 3 - 5



ISO EN 11611 level 1 and 2



EN 61482-1-2 2007 Flame Retardant Welding specific clothing

# Welding Clothing



# Welding Clothing/Flame Resistant

## Flame Resistant Welding Clothing



### FR Welding Jackets

The ESAB Black & yellow Welders Jacket has been designed to give maximum performance, yet offer extreme comfort & durability. The Garment is made from high performance Phoenix-FR fabric which is inherently flame retardant. The coverall features adjustable sleeves, two top pockets and concealed Zip front. This garment is fully CE approved to EN ISO11612 FR, ISO 11611 Welding, EN1149-5 Anti Static & EN61488 Arc protection. Sizes Small to XX-Large.

ESAB FR Welding Jacket, S	<b>0700 010 358</b>
ESAB FR Welding Jacket, M	<b>0700 010 359</b>
ESAB FR Welding Jacket, L	<b>0700 010 360</b>
ESAB FR Welding Jacket, XL	<b>0700 010 361</b>
ESAB FR Welding Jacket, XXL	<b>0700 010 362</b>



### FR Welding Trousers

The ESAB Black & yellow Welders trousers has been designed to give maximum performance, yet offer extreme comfort & durability and compliment the FR welding Jacket. The Garment is made from high performance Phoenix-FR fabric which is inherently flame retardant. The trousers features elasticated waist with Belt loops, two side access pockets and two back pockets. This garment is fully CE approved to EN ISO11612 FR, ISO 11611 Welding, EN1149-5 Anti Static & EN61488 Arc protection. Sizes Small to XX-Large.

ESAB FR Welding Trousers, S	<b>0700 010 363</b>
ESAB FR Welding Trousers, M	<b>0700 010 364</b>
ESAB FR Welding Trousers, L	<b>0700 010 365</b>
ESAB FR Welding Trousers, XL	<b>0700 010 366</b>
ESAB FR Welding Trousers, XXL	<b>0700 010 367</b>



### ESAB FR Coverall

The ESAB FR Welders overall has been designed for the maximum comfort and safety. The garment is made from a flame retardant inherent material. The coverall features a elasticated waist for better comfort and fit, adjustable sleeves and legs, and a covered/protected zipper. The neck is protected by a stand up collar, and knee pads can be fitted. Conforms to EN ISO11612 FR, ISO11611 Welding, EN1149-5 Anti Static. Sizes Small to XX-Large.

ESAB Welders Coverall, S	<b>0700 010 328</b>
ESAB Welders Coverall, M	<b>0700 010 329</b>
ESAB Welders Coverall, L	<b>0700 010 330</b>
ESAB Welders Coverall, XL	<b>0700 010 331</b>
ESAB Welders Coverall, XXL	<b>0700 010 332</b>

# Welding Clothing/Flame Resistant



## ESAB FR Fleece

ESAB Phoenix-FR Black Flame retardant, anti-static, welders Fleece. Featuring, Zip front with contrasting plackett, two side pockets and one internal zip. Conforms to EN ISO11612 FR, ISO11611 Welding, EN1149-5 Anti Static. Sizes Small to XX-Large.

ESAB FR Fleece, S	0700 010 368
ESAB FR Fleece, M	0700 010 369
ESAB FR Fleece, L	0700 010 370
ESAB FR Fleece, XL	0700 010 371
ESAB FR Fleece, XXL	0700 010 372



## ESAB FR Jersey

ESAB Phoenix-FR Black Flame retardant, anti static, welders Jersey polo Shirt. Featuring, Zip front with contrasting plackett, Unique ESAB Contrasting ribbed Collar. Conforms to EN ISO11612 FR, ISO11611 Welding, EN1149-5 Anti Static. Sizes Small to XX-Large.

ESAB FR Jersey, S	0700 010 373
ESAB FR Jersey, M	0700 010 374
ESAB FR Jersey, L	0700 010 375
ESAB FR Jersey, XL	0700 010 376
ESAB FR Jersey, XXL	0700 010 377



## ESAB FR Jumper

ESAB Phoenix-FR Flame retardant, anti static, welders Jumper. Conforms to EN ISO11612 FR, ISO11611 Welding, EN1149-5 Anti Static & EN61488 Arc protection. Sizes Small to XX-Large.

ESAB FR Jumper, S	0700 010 378
ESAB FR Jumper, M	0700 010 379
ESAB FR Jumper, L	0700 010 380
ESAB FR Jumper, XL	0700 010 381
ESAB FR Jumper, XXL	0700 010 382



## ESAB Overall Knee Pads

ESAB Overall optional knee pads.

ESAB Overall Knee Pads	0700 010 352
------------------------	--------------


# Welding Clothing/Leather

## Leather Workwear




ESAB's Leather protective range is helping to redefine welder protection, with garments that provide optimal fit, comfort, performance, style & durability, resulting in safer, more productive working environments.

The products include jackets, trousers, sleeves, aprons & gaiters, all ideal for every welding application for the professional welder.



ISO EN 11612  
Flame Retardance



ISO EN 11611  
level 1 and 2



### Welding Jackets

The ESAB Proban/leather jackets are designed for maximum comfort and safety. The sleeves and shoulders are made in durable grade A leather to withstand the exposure to welding spatter. The front and back is made from flame retardant Proban material. The garment feature concealed inner pockets, adjustable sleeves and a stand up collar. Kevlar stitched.

ESAB Proban/Leather welding jacket, M	0700 010 301
ESAB Proban/Leather welding jacket, L	0700 010 302
ESAB Proban/Leather welding jacket, XL	0700 010 303
ESAB Proban/Leather welding jacket, XXL	0700 010 304



### Welding Trousers

The ESAB Proban/Leather trousers are designed for maximum comfort and safety. The front of the legs are reinforced with leather to withstand the spatter and welding sparks. Kevlar stitched.

ESAB Proban/Leather welding trousers, M	0700 010 333
ESAB Proban/Leather welding trousers, L	0700 010 334
ESAB Proban/Leather welding trousers, XL	0700 010 335
ESAB Proban/Leather welding trousers, XXL	0700 010 336

# Welding Clothing/Leather



## Welding Jacket

ESAB Welding jackets are made of high quality leather. The front is reinforced in order to withstand mechanical and thermal stress. The jacket is stitched with Kevlar thread, features stand up collar and inside pocket with adjustable wrists.

Welding Jacket, M	0700 010 266
Welding Jacket, L	0700 010 002
Welding Jacket, XL	0700 010 003
Welding Jacket, XXL	0700 010 267



## Welding Aprons

Tan side split leather welders' waist apron with Kevlar stitching and buckle attachment. Size 60cm x 70cm.

ESAB Apron	0700 010 007
------------	--------------



## Leather Gaiters

Leather gaiters to protect the footwear during welding. The gaiters are fastened using velcro.

Leather Gaiters	0700 010 008
-----------------	--------------



## Welding Sleeve

Chrome leather sleeves with a total length of 47cm. Equipped with elasticated cuff and velcro arm fastening.

Welding Sleeve	0000 595 039
----------------	--------------

# Coveralls



## Welding Coveralls (Flame Resistant)

The ESAB fire retardant 100% cotton coverall comes with 2 chest pockets a ruler pocket and has concealed stud fastenings. Conforms to EN 531, EN 470-1 & EN 533.

ESAB Black coverall, M	<b>0700 010 038</b>
ESAB Black coverall, L	<b>0700 010 039</b>
ESAB Black coverall, XL	<b>0700 010 040</b>
ESAB Black coverall, XXL	<b>0700 010 041</b>



## Flame Retardant Hi Visibility Coverall

100% cotton, flame resistant, 2 zipped chest pockets, concealed stud and zip. CE approved to EN531 (A, B2, C1) and EN470-1.

Flame Retardant Hi Vis coveralls	36" (92cm) Orange	<b>0701 502 334</b>
Flame Retardant Hi Vis coveralls	38" (97cm) Orange	<b>0701 502 335</b>
Flame Retardant Hi Vis coveralls	40" (102cm) Orange	<b>0701 502 336</b>
Flame Retardant Hi Vis coveralls	42" (107cm) Orange	<b>0701 502 337</b>
Flame Retardant Hi Vis coveralls	44" (112cm) Orange	<b>0701 502 338</b>
Flame Retardant Hi Vis coveralls	46" (117cm) Orange	<b>0701 502 339</b>
Flame Retardant Hi Vis coveralls	48" (122cm) Orange	<b>0701 502 340</b>
Flame Retardant Hi Vis coveralls	50" (127cm) Orange	<b>0701 502 341</b>
Flame Retardant Hi Vis coveralls	52" (132cm) Orange	<b>0701 502 342</b>
Flame Retardant Hi Vis coveralls	54" (137cm) Orange	<b>0701 502 343</b>
Flame Retardant Hi Vis coveralls	56" (142cm) Orange	<b>0701 502 344</b>
Flame Retardant Hi Vis coveralls	58" (147cm) Orange	<b>0701 502 373</b>



## Skull Cap

The skull cap is a 100% cotton light weight and comfortable form of additional comfort when worn underneath a welding helmet. Preventing less friction and irritation from the head gear on sensitive parts of the brow.

Skull Cap	<b>0700 010 351</b>
-----------	---------------------

# Head Protection



## Proban Hood

Flame resistant head protection which cover not only the head but also the neck, nape and shoulders.

Proban Hood

0000 593 269



## Leather Head and Chest Protection

These two pieces of leather material, offer protection to the head, neck and chest area. They are ideal for welding in areas where all round protection is needed, to protect against sparks, spatter and any other air born particles from the welding environment. They are split into two pieces. One piece is covering the chest area, whilst the other piece is covering the head and neck area at the back of the helmet. They can easily be adapted to the Origo Tech, New-Tech & Aristo Tech welding helmets.

Leather Chest Protection

0700 000 062

Leather Head/Neck Protection

0700 000 063



## Balaclava

The balaclava is worn underneath the welding helmet to give you full head protection when working in a cold environment. The balaclava is flame resistant, 100% zipro treated wool, 385 gr/m<sup>2</sup> EN531.

Balaclava

0700 010 269



## Insulated Helmet Liner

The insulated helmet liner is worn underneath the welding helmet to offer protection from the elements when working in a cold environment.

Insulated Helmet Liner

0000 904 378

# Welding Gloves

## Glove EN standards and materials

### CE labelling – Risk Class – Categorising Personal Protective Equipment (PPE), EU Directive 89/686/EF.

The intention of this directive is to ensure that all PPE sold in Europe corresponds to the relevant EN standards. This will secure a generally identical quality standard throughout Europe. Products that meet the requirements in one or more standards must be branded with the CE logo.

#### Category 1, Simple Design:

These products protect against minimal risks and can only be used where any risk increases gradually and can be easily identified by the user in advance. The CE labelling consists of only the CE mark.

#### Category 2, Intermediate Design:

The products are tested and technically approved by an authorised test institute. The institute also examines the manufacturers technical documentation to establish that the product is produced in accordance with the relevant EN standard. The CE labelling consists of the CE mark, the test institute approval number, year of first time approval, pictograms and test performance.

EN 420 (Cat 1) defines the general requirements for most protective gloves as:

- Product and packaging information and labelling
- Care and maintenance
- Size
- The product itself must present no risk to users (requirements concerning chromium content and pH)
- Storage of the products



#### EN 388 – Protection against mechanical damage

##### Character

a) Abrasion resistance	0 – 4
b) Blade Cut resistance	0 – 4
c) Tear resistance	0 – 4
d) Puncture resistance	0 – 4



#### EN 12477 – Welding gloves

##### Thermal resistance

##### Character

a) Burning behaviour	0 – 4
b) Contact heat	0 – 4
c) Convective heat	0 – 4
d) Small splashes of molten metal	0 – 4

Test Criteria	Standard	Minimum performance required		Maximum performance achievable
		A	B	
Abrasion resistance	EN 388	2	1	4
Blade cut resistance	EN 388	1	1	5
Tear resistance	EN 388	2	1	4
Puncture resistance	EN 388	2	1	4
Burning behaviour	EN 407	3	2	4
Contact heat	EN 407	1	1	4
Convective heat	EN 407	2	n/a	4
Small splashes of molten metal	EN 407	3	2	4
Dexterity	EN 420	1	4	5

## Leather quality

Finding the right quality leather to meet the exacting requirements of the welding professional requires experience. ESAB have extensive knowledge and experience with tanning and finishing – important processes that determine the final quality of the leather. It is these processes that give the leather its qualities in relation to strength, softness and flexibility.

The upper skin is called “grain” and the inner skin is called “split” Grain leather is soft, durable, wear resistant and tolerates some water. It can also withstand heat up to 80°C. Split leather is porous and will therefore absorb humidity more easily than grain leather. Its naturally rough surface gives good grip properties. The thickness depends on how the skin is cut and whether it is cut in one or two layers. Without special treatment, split leather can resist heat up to 100°C.

## Ox Leather

A wear resistant grain leather which tolerates water. The leather is often thick, which in addition to its wear resistant properties makes it suitable for use in working gloves that must tolerate rough use. It also gives good protection against heat.

## Pig Leather

The surface of the leather is relatively porous which makes the breathability of the glove better than most other leathers. Pig leather is also softer.


## Goat Leather


Goat leather is the longest lasting leather. Natural lanolin content makes goat leather extremely flexible. It also has very good wear resistance. Strength and flexibility make this leather very suitable for work where good finger feel and dexterity is required.

# Welding Gloves

## Welding Gloves MIG/MAG/MMA

All ESAB and Murex gloves are CE approved. The heavy duty welding gauntlets and riggers have been tested and certified by a third party notifying body. The glove is then a Cat. 2 product.

- 

Test against mechanical stress such as abrasion, cut, tear and puncture.
- 

Test for thermal performance such as exposure to an open flame, contact heat, convective heat, radiant heat, small and large splashes of molten metal.



### ESAB Curved MIG Glove

These superior new welding gloves from ESAB offer a whole new approach to fit, form and function. Ergonomically designed to fit the natural curve of the hand, offering increased quality & comfort to the wearer. The MIG glove is made from heavy & fine cut leather, and is lined from hand to cuff. With the curved design the glove fits the hand perfectly, and also has a flexible wrist area which reduces friction. With welted seams, kevlar stitching & reinforced thumb, the glove is very strong and offers a very high level of protection to the wearer. EN 12477 and EN 388 Cat 2.

ESAB Curved MIG, L	0700 005 043
ESAB Curved MIG, XL	0700 005 040



### Heavy Duty Basic

A high quality 1.2/1.3mm thick side split cow leather welding gauntlet with Wing thumb, fully Kevlar stitching, fully welted. The glove is fully lined with FR cotton to cuff and full fleece jersey liner to palm. This glove offers the welder durability, longevity and total comfort. CE approved to EN12477 and EN388 Cat 2.

Heavy Duty Basic	0700 005 007
------------------	--------------

# Welding Gloves



## Heavy Duty Regular

A Heavy duty durable yet flexible welding gauntlet. Made from 1.3mm side split cow leather which is fully heat resistant and hard wearing. Features reinforced thumb, fully Kevlar stitched and welted with additional vein patch for added protection. The glove is fully lined with FR cotton to the cuff and fleece jersey liner to the palm. CE approved to EN12477 and EN388 Cat 2.

Heavy Duty Regular

**0700 005 008**



## Heavy Duty Black

Our most popular product, made from high performance cow split leather, high dexterity palm and fingers with wing thumb, fully welted fingers and Kevlar stitched. Ideal for areas of high mechanical stress. CE approved to EN12477 and EN388 Cat 2.

Heavy Duty Black

**0467 222 007**



## Heavy Duty EXL

A high quality welding gauntlet made from both cow split and grain leather. The grain leather back offers excellent heat properties while the split leather offers excellent dexterity, durability and comfort. Features fully reinforced three fold thumb, fully welted, Kevlar stitched with grain back. Fully lined inner with FR cotton to cuff and full Jersey lining to palm. CE approved to EN12477 & EN388 Cat2.

Heavy Duty EXL, L  
Heavy Duty EXL, XL

**0700 005 009**  
**0700 005 029**

# Welding Gloves



## Murex Superior Gauntlet

A Hardwearing dexterous 1.2mm cow split leather welding gauntlet with reinforced 1.3mm leather patch to the palm offering the welder a hard wearing product to meet the toughest of industrial processes. Features straight thumb, with reinforced overlay, fully welted, fully lined with FR cotton liner to cuff and fleece jersey lining to palm. CE approved to EN12477 and EN388 Cat 2.

Superior Gauntlet Reinforced

0701 415 615



## Red Gauntlet

ESAB's entry level welders gauntlet, made from cow split leather with a cotton FR lining. Fully welted with a wing thumb for added comfort. CE approved to EN12477 & EN388.

Red Gauntlet

0701 380 498

# Welding Gloves TIG



## ESAB Curved TIG Glove

These superior new welding gloves from ESAB offer a whole new approach to fit, form and function. Ergonomically designed to fit the natural curve of the hand, offering increased quality & comfort to the wearer. The TIG glove is made from thin high quality leather, with improved fit for higher dexterity. The glove is highly durable, with welted seams & kevlar stitching. The glove is also extremely light weight, which increases the comfort to the wearer.

ESAB Curved TIG Gauntlet L  
ESAB Curved TIG Gauntlet XL

0700 005 041  
0700 005 042

# Welding Gloves



## TIG Basic

A lightweight durable traditional Tig welders gauntlet up graded to EN12477 & EN388 Cat 2.

TIG Basic

0700 653 532



## TIG Soft

A unique ultra thin Goat split leather welding glove, suitable for all Tig applications. Features a reinforced straight thumb, wraparound first finger, vein patch and 13cm extended cuff. CE approved to EN12477 & EN388 Cat 2.

TIG Soft

0700 005 005



## TIG SuperSoft

Esab exclusive Tig welding gauntlet made from high quality sheepskin with full Kevlar stitching. Features gun cut straight thumb, cow split 13cm cuff, wraparound 1st finger for increased dexterity, extremely comfortable, dexterous and durable. CE approved to EN12477 & EN388 Cat 2.

TIG SuperSoft

0700 005 006



## TIG Professional

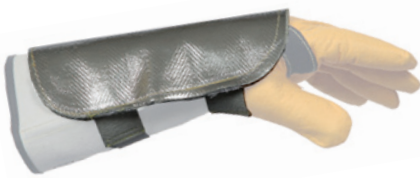
A high quality Tig gauntlet made from selected cow hide, features wing thumb with reinforcement, 13cm split leather cuff, vein patch and with the addition of a jersey lightweight liner to the palm. CE approved to EN12477 & EN388 Cat 2.

TIG Professional

0701 415 963

# Welding Gloves

## Welding Gloves Heat Resistant



### Aluminised Hand Shield

Woven Kevlar Aluminised Welders hand shield for use in conjunction with welding gauntlets, to give added protection from radiant heat and general heat stress. Aluminised Kevlar is bonded and Stitched onto a 1.2mm cow split leather which is elasticated to fit all hand sizes.

Aluminised Hand Shield

0700 010 009



### Heavy Duty Aluminium 250°C

A high temperature addition to the range. Featuring unique aluminised woven Kevlar back capable of withstanding a radiant heat of up to 1000°C with a heavy duty 1.3mm ceramic fibre supported leather palm capable of Contact palm heat up to 250°C. The glove features wing thumb, fully welted seams, Kevlar stitched with a heavy duty FR drill cotton liner which features a Thermolate treatment to the palm. The aluminium reflects all thermal radiation away from the user. CE approved to EN12477 & EN388 Cat 2.

Heavy Duty Aluminium 250°C

0700 005 010



### Heavy Duty Aluminium 500°C

An ultra high temperature 500°C welding gauntlet featuring: unique aluminised woven Kevlar back capable of withstanding 1000°C, with a heavy duty 1.3mm ceramic fibre supported leather palm capable of Contact heat up to 500°C. The glove features wing thumb, fully welted seams, full Kevlar stitching with a heavy duty cotton jersey liner which features a shearwater treatment to the palm. The aluminium reflects all thermal radiation away from the user. CE approved to EN12477 & EN388 Cat 2.

Heavy Duty Aluminium 500°C

0700 005 046



### Heavy Duty Aluminium 1500°C

A revolutionary new product which incorporates high technology woven ceramic fibre to the back of the Aluminised Kevlar Gauntlet, which offers protection against 1500°C radiant heat. This is incorporated into a high grade 1.3mm side split leather palm with full Thermolate felt offering 120°C contact heat protection to the palm. The glove is fully lined with jersey palm, offers a wing thumb, fully welted stitching and full Kevlar stitching. CE approved to EN12477 & En388 Cat 2.

Heavy Duty Aluminium 1500°C

0700 005 045

# Welding Gloves



## Welding Gloves General Handling



### ESAB Heavy Duty Worker

A durable, hardwearing rigger style work glove made from high quality cow side split leather, featuring wing thumb, fully welted seams, vein patch, 6cm rubberised cotton cuff with finger tip protection and knuckle strap. Fully jersey lined for added comfort. CE approved to EN388 Cat 2.

Heavy Duty Worker

**0700 005 011**



### Superior Rigger

A hardwearing work glove made from 1.2mm cow split leather. Featuring wing thumb, welted seams, vein patch, 5.5cm rubberised cotton cuff with finger tip protection and knuckle strap. Fully jersey lined for added comfort. CE approved to EN388 Cat 2.



Superior Rigger

**0701 415 613**

# Safety Footwear

All ESAB welding footwear is tested and approved according to EN 345 (safety footwear). Depending on application, footwear should always provide appropriate protection, EN 345 gives the following guidelines:

**Safety shoes and boots – Key to symbols:**

<b>SB</b> Safety Basic to EN345 200 joules toe protection	<b>S3</b> Safety Basic, antistatic, energy absorbing heel, water resistant upper & steel midsole (anti penetration)
<b>S1</b> Safety Basic, antistatic, energy absorbing heel and closed back part	 Antistatic
<b>S2</b> Safety Basic, antistatic, energy absorbing heel and water and oil resistant upper	<b>DD</b> Dual Density
	 Steel Midsole



## ESAB Safety Ankle Boot **S3** **DD**

Offers protection according to S3, and it prevents weld spatter from falling into the shoe. The special microfibre soft lining makes it very comfortable to wear. The boot is water and oil resistant and the seam is reinforced with rivets for maximum durability. The front is folded and fastened with velcro to give a flat and protected upper. The dual density sole offers a soft upper part with front and back 'bumpers' and arch support, whilst the part in direct contact with the ground offers extremely high slip resistance. The shoe is equipped with shock absorption and the TF system to prevent ankle spraining risks, also the sole is heat resistant up to 180°C. They have an elasticated tongue for wide fitting feet and high slip resistant soles.

ESAB ankle boot, size 6 1/2 (40)	<b>0700 010 188</b>
ESAB ankle boot, size 7 (41)	<b>0700 010 189</b>
ESAB ankle boot, size 8 (42)	<b>0700 010 190</b>
ESAB ankle boot, size 9 (43)	<b>0700 010 191</b>
ESAB ankle boot, size 10 (44)	<b>0700 010 192</b>
ESAB ankle boot, size 10 1/2 (45)	<b>0700 010 193</b>
ESAB ankle boot, size 11 (46)	<b>0700 010 219</b>



## ESAB Safety Rigger Boot **S3** **DD**

Offers protection according to S3 and the high upper gives full protection to the shin and prevents weld spatter from falling into the boot. The boot is equipped with leather pull loops at the top, making the boot easy to slip on. The boot is water and oil resistant and the seam is reinforced with rivets for maximum durability. The dual density sole offers a soft upper part with front and back 'bumpers' and arch support, whilst the part in direct contact with the ground offers extremely high slip resistance. The shoe is equipped with shock absorption and the TF system to prevent ankle spraining risks, also the sole is heat resistant up to 180°C.

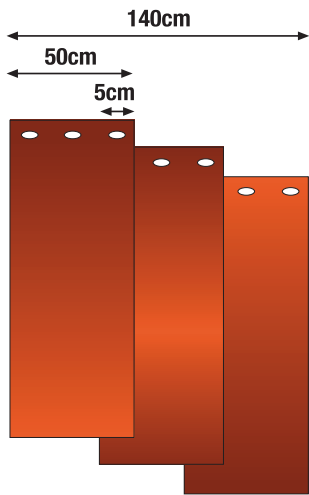
ESAB rigger boot, size 6 1/2 (40)	<b>0700 010 194</b>
ESAB rigger boot, size 7 (41)	<b>0700 010 195</b>
ESAB rigger boot, size 8 (42)	<b>0700 010 196</b>
ESAB rigger boot, size 9 (43)	<b>0700 010 197</b>
ESAB rigger boot, size 10 (44)	<b>0700 010 198</b>
ESAB rigger boot, size 10 1/2 (45)	<b>0700 010 199</b>
ESAB rigger boot, size 11 (46)	<b>0700 010 220</b>
ESAB rigger boot, size 12 (47)	<b>0700 010 218</b>



# ***Welding Tools and Accessories***

A range of quality tools and accessories for welding, cutting and general engineering applications offering everything from cable connectors to high specification electrode drying ovens. All our welding tools and accessories conform to the relevant EU legislation and standards.

# Welding Curtains



## Welding Curtains

Three colour types are available and all three can be supplied as standard curtains, as well as strip curtains. The self-extinguishing material provides good protection from dangerous welding radiation. The curtains are fully seamed all around with 5cm wide seams, eyelets every 20cm on one width side, fitted on the right and the left side with a unique snap fastener system. This enables the user to connect the curtains with each other to create a curtain in the required width. The strip curtain allows access and enables material to be passed through, even when it is closed. All approved according to EN 1598, the European standard for welding curtains. The mounting rings come in a package of seven, which is enough to mount any of the curtains (standard as well as strip). Rings are included when ordering any of the curtains.

Welding curtain, dark red, 1.8 x 1.4m	0700 008 004
Welding curtain, green transparent, 1.8 x 1.4m	0700 008 005
Welding curtain, dark green (DIN 9), 1.8 x 1.4m	0700 008 006
Welding strip curtain, dark red, 1.8 x 1.4m	0700 008 001
Welding strip curtain, green transparent (DIN 6), 1.8 x 1.4m	0700 008 002
Welding strip curtain, dark green (DIN 9), 1.8 x 1.4m	0700 008 003
Mobile curtain, without wheel, dark red, 2 x 1.4m	0000 595 313
Mobile curtain, without wheel, dark red, 2 x 2m	0000 595 315
Mounting rings PVC	0700 008 007
Mounting rings metal	0700 008 008

## Wire Reel for Welding Curtains

The wire reel is used when hanging the curtains. The wire is an 8 metre retractable stainless steel line. The unit is fixed to the wall and the line is tightened by using the specially designed torque control.

Wire reel for welding curtain	0700 008 018
-------------------------------	--------------

# Welding Curtains



## ESAB VersiFlex Frame for Welding Curtains

The new frame is made from jointed 32 and 22mm diameter steel tubing, with the joints to the leg portions being precision swaged for a sturdier joint. The ultra stable frame with a 700mm pitch for the feet width comes with rubber feet as standard. The offset legs enable two frames to be put together to make a tight 90 corner, or 4 frames together to make a cubicle.

### As standard the Versi Flex frame can make 3 width sizes:

- 1) 1000 as a frame to make a cutting barrier with a Welding Blanket.
- 2) 1400 as the standard welding curtain frame.
- 3) 2000 as wider version of the above.

### Options for the frame:

- 1) A set of 4 wheels, these simply screw into the sockets covered by the standard rubber feet, turning the screen into a mobile.
- 2) A set of 2 outriggers, these are used to make sides to a standard frame as a partial cubicle.

ESAB VersiFlex frame system  
Set of outrigger arms (Set of 2)  
Set of wheels (Set of 4)

0700 008 020  
0700 008 021  
0700 008 022



# Welding Blankets

## Welding Blankets

The ESAB Welding blankets are produced using heat and flame resistant fabrics. The blankets provide excellent protection from grinding/welding sparks, slag and drops of molten metal. ESAB offer a wide range of blankets with different characteristics and in many different sizes. The blankets are colour coded.

When selecting the most suitable blanket for the application, the following factors should be considered:

**Positioning of the blanket** – All blanket are to be used on an incline of at least 15 degrees. Sparks hitting a blanket, which is positioned horizontally, will put extra stress on the material and a stronger and more heat resistant blanket should be used.

**Work application** – For light duty welding or grinding a thinner and less heat resistant blanket can be used. For heavy duty welding or cutting when the blanket is exposed to drops of molten metal then a more durable blanket should be used.



# Welding Blankets



## Light Duty Applications

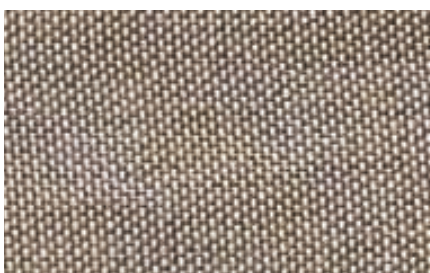


### Welding Blanket 3001

P.U. coated fibreglass blanket for light sparks and spatter. Provides an excellent vertical screen to protect equipment and personnel from the spray of sparks. Maximum temp. = 550°C, Weight = 460g, Colour = Grey.

2m x 1m	<b>0700 008 026</b>	1m x 25m roll	<b>0700 008 028</b>
2m x 2m	<b>0700 008 027</b>		

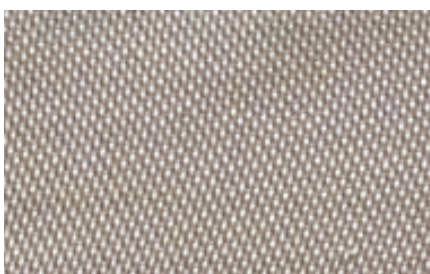
## Medium Duty Applications



### Welding Blanket 1850

Heat treated fibreglass blanket for medium sparks and spatter. Best when used on an incline of at least 15 degrees. Very flexible. Maximum temp. = 550°C, Weight = 600g, Colour = Tan.

2m x 1m	<b>0700 008 023</b>	1m x 25m roll	<b>0700 008 025</b>
2m x 2m	<b>0700 008 024</b>		

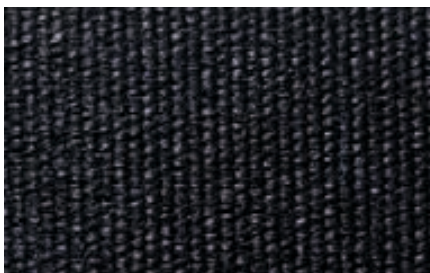


### Welding Blanket 2-1900

Vermiculite coated silica welding blanket for medium duty applications. The silica fibre has a high melting temperature of 1600°C making it an excellent choice when drops of molten metal are a problem. The MD1300 blanket resists most acids. Max temp. = 1600°C, Weight = 600g, Colour = Bronze.

2m x 0.9m	<b>0700 008 032</b>	0.9m x 25m roll	<b>0700 008 034</b>
2m x 1.8m	<b>0700 008 033</b>		

## Heavy Duty Applications



### Welding Blanket 906

Fibreglass blanket with a specially formulated graphite and polyurethane solution which provides high temperature and abrasion resistance. Suitable for medium to heavy duty industrial applications. Not suitable in very oily situations. Maximum temp. = 750°C, Weight = 1020g, Colour = Black.

2m x 1m	<b>0700 008 029</b>	1m x 25m roll	<b>0700 008 031</b>
2m x 2m	<b>0700 008 030</b>		

## Special Duty Applications



### Welding Blanket 5180

A carbon fibre felt welding blanket for heavy duty applications. This blanket offers extreme heat resistance of 1300°C. The 5180 is extremely light and it's been designed for the automotive industry. Maximum temp. = 1300°C, Weight = 425g, Colour = Black.

2m x 1m	<b>0700 008 035</b>	1m x 25m roll	<b>0700 008 037</b>
2m x 2m	<b>0700 008 036</b>		

# Cables & Connectors

## Welding Cable <HAR> H01N2-D

ESAB welding cable is of the highest quality and has top-class performance characteristics. This cable is approved in accordance with international standards and it is harmonised <HAR>. The cable is extremely resistant to light, chemicals and mechanical damage and it maintains its flexibility even when used in a cool environment. (Certified to HD 22.6)



Nominal cross sectional area of conductor	Maximum diameter of wires in conductor	Nominal thickness of insulation	Approximate overall diameter	Approximate weight	Maximum conductor resistance at temperature 20°C	Load Carrying Capacity - 10 Minutes			Nominal cross sectional area Cooper conductor mm²	D.C Voltage Drop Per 100 A per 10m of Cable at:		
mm²	mm	mm	mm	kg/km	Plain Ω/km	60%	35%	20%		20°C	60°C	85°C
<b>H01N2-D</b>										V		
16	0,21	2,0	8,9	197	1,21	133	144	167	16	1,24	1,430	1,560
25	0,21	2,0	10,1	281	0,780	182	203	244	25	0,795	0,920	0,998
35	0,21	2,0	11,4	379	0,554	233	268	324	35	0,565	0,654	0,709
50	0,21	2,2	13,2	530	0,386	303	356	439	50	0,393	0,455	0,493
70	0,21	2,4	15,3	735	0,272	307	400	578	70	0,277	0,321	0,348
95	0,21	2,6	17,5	955	0,206	478	582	734	95	0,2100	0,243	0,264
120	0,51	2,8	19,7	1213	0,161	564	692	880	120	0,164	0,190	0,206

### Technical data

**Conductor:** Plain annealed copper stranded wires  
**Insulation:** Flame retardant oil resistant  
**Colour of sheath:** Black  
**Test Voltage 50Hz:** 1000V  
**Maximum conductor operating temp:** +85°C  
**Lowest ambient temperature for fixed installation:** -40°C  
**Lowest installation temperature:** -25°C  
**Maximum short-circuit conductor temperature:** +250°C  
**Pulling strength:** The maximum static pulling strength may not exceed 15N/mm²  
**Minimum bending radius:** 6 x D ; D – overall diameter of cable  
**Flame propagation:** EN 60332-1-2:2004, IEC 60332-1-2:2004

**Tested and certified according to: HD 22.6**

### Ordering Information

Sectional area 16mm² sold per 50m coils	0190 429 801
Sectional area 25mm² sold per 50m coils	0262 613 601
Sectional area 35mm² sold per 50m coils	0262 613 602
Sectional area 50mm² sold per 50m coils	0262 613 606
Sectional area 70mm² sold per 50m coils	0262 613 603
Sectional area 95mm² sold per 50m coils	0262 613 604
Sectional area 120mm² sold per 25m coils	0262 613 605

### Application

**Designed for welding equipment and accessories;** retain their high flexibility even under influence of ozone, light, oxygen, protective glass, oil & petrol; resistant to flame propagation, suitable for use in dry and damp conditions, outdoors and indoors

# Cables & Connectors



## OKC Cable Connection

CE-approved, fully insulated cable connections with neoprene rubber. Bayonet-type connection which locks firmly to provide safe and effective contact. The cable is fixed into a socket with two Allen screws.

OKC male 10-25mm <sup>2</sup> ESAB	<b>0160 360 880</b>
OKC male 35-50mm <sup>2</sup> ESAB	<b>0160 360 881</b>
OKC male 70-95mm <sup>2</sup> ESAB	<b>0160 360 882</b>
OKC male 120mm <sup>2</sup> ESAB	<b>0160 360 883</b>
OKC female 10-25mm <sup>2</sup> ESAB	<b>0160 361 880</b>
OKC female 35-50mm <sup>2</sup> ESAB	<b>0160 361 881</b>
OKC female 70-95mm <sup>2</sup> ESAB	<b>0160 361 882</b>
OKC female 120mm <sup>2</sup> ESAB	<b>0160 361 883</b>
OKC male 10-25mm Murex (Red)	<b>0701 416 257</b>
OKC male 25-50mm Murex (Red)	<b>0701 416 258</b>
OKC male 50-95mm Murex (Red)	<b>0701 416 259</b>
OKC female 10-25mm Murex (Red)	<b>0701 416 254</b>
OKC female 25-50mm Murex (Red)	<b>0701 416 255</b>
OKC female 50-95mm Murex (Red)	<b>0701 416 256</b>
OKC Adapter 25-50mm	<b>0590 046 800</b>



## ZBK Cable Connection

Fully insulated with neoprene rubber. Sturdy and robust with low contact resistance. The cable is fixed into a socket with two Allen screws. The two halves of the connection in a ZBK connection are identical and can therefore be interchanged in any order.

ZBK 25-35mm <sup>2</sup>	<b>0265 902 482</b>
ZBK 50-70mm <sup>2</sup>	<b>0265 902 481</b>
ZBK 95-120mm <sup>2</sup>	<b>0265 902 480</b>



## OKC Machine Contacts & Angle Connection

The contacts should be mounted on the front panel of the machine and come in three dimensions. The angle connection is supplied as OKC 50-95 male and female.

OKC machine contact for OKC 25	<b>0160 362 880</b>
OKC machine contact for OKC 50/95	<b>0160 362 881</b>
OKC machine contact for OKC 120	<b>0160 362 882</b>
Type 1 Angle connection, 1 male, 2 female	<b>0365 557 001</b>
Type 2 Angle connection, 2 male, 1 female	<b>0365 558 001</b>



## CC17/18 Connectors

These heavy-duty connectors feature the cone and bush design of cable connection. They have high quality black rubber boots with positive lock and seal. They will accept up to 70mm<sup>2</sup> copper or aluminium cable.

CC17 Plug	<b>0700 606 402</b>
CC18 Socket	<b>0700 606 403</b>

# Electrode Holders



## Electrode Holder ESAB 200, 400 and 500

ESAB's CE-approved screw-type electrode holder offers many advantages including:

Excellent current transfer between electrode and holder

Two hole positions at 45 and 90 for welding in different positions

Electrode cable held in place by two Allen screws

All electrode holders are fully insulated to provide maximum safety

ESAB 200, 200 A (35%)	<b>0333 249 001</b>
ESAB 400, 400 A (35%)	<b>0369 849 880</b>
ESAB 500, 500 A (35%)	<b>0369 850 880</b>



## Electrode Holder Optimus

A closed head electrode holder allowing the electrode to be fitted either horizontally or vertically. The electrode holder is made of glassfibre-reinforced plastic. All Optimus electrode holders are fully insulated.

Optimus 300, 400 A (35%)	<b>0760 001 300</b>
Optimus 400, 500 A (35%)	<b>0760 001 400</b>
Optimus 600, 600 A (35%)	<b>0760 001 600</b>



## Electrode Holder Samson

An open head electrode holder, the Samson is the 'classic' electrode tong design of electrode holder, made of a glassfibre-reinforced plastic. All Samson electrode holders are fully insulated.

Samson 300, 300 A (60%)	<b>0760 002 300</b>
Samson 400, 400 A (60%)	<b>0760 002 400</b>
Samson 500, 500 A (60%)	<b>0760 002 500</b>



## Eco Holder Handy

A 'screw type' electrode holder with a fully insulated head and handle.

Handy 200, 200 A (35%)	<b>0700 006 003</b>
Handy 300, 300 A (35%)	<b>0700 006 016</b>
Handy 400, 400 A (35%)	<b>0700 006 013</b>

# Electrode Holders & Clamps



## Eco Holder Confort

An open head electrode holder with a fully insulated head and handle.

Confort 200, 200 A (35%)	<b>0700 006 004</b>
Confort 300, 300 A (35%)	<b>0700 006 005</b>
Confort 400, 400 A (35%)	<b>0700 006 015</b>



## Eco Holder Prima

A closed head electrode holder with a fully insulated head and handle.

Prima 200, 200 A (35%)	<b>0700 006 006</b>
Prima 300, 300 A (35%)	<b>0700 006 007</b>
Prima 400, 400 A (35%)	<b>0700 006 014</b>



## Murex Handicool

This is a crocodile style electrode holder, which is made from black phenolic resin insulated jaws and black handle. The holder is fully insulated for extra safety and copper jaws for good contact.

400 A Handicool Electrode Holder	<b>0700 605 376</b>
600 A Handicool Electrode Holder	<b>0700 605 378</b>



## Murex Econ

This is a twist grip, short stub electrode holder. All the electrode is available for use and the angle allows the hand to remain away from the weld pool. The handle is used to apply torque to the electrode clamp in the head.

Econ 405 Electrode Holder	<b>0701 380 433</b>
Econ 605 Electrode Holder	<b>0701 380 434</b>

# Return Clamps



## MK 150, MP 200, MP 300 and MP450

The MK 150 is a fully galvanised earth clamp with a maximum opening of 50mm. The MP 200, MP 300 and MP 450 are robust earth clamps with strong gripping power for good contact. The maximum opening for the MP 200 is 50mm and 55mm and 60mm for the MP 300 and MP 450 respectively.

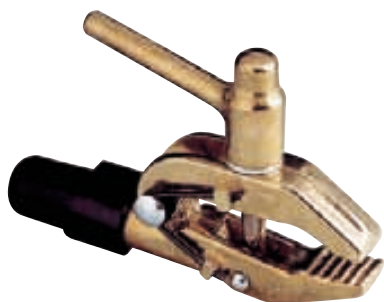
MK 150, 150 A (35%)	<b>0682 103 801</b>
MP 200, 200 A (35%)	<b>0367 558 880</b>
MP 300, 300 A (35%)	<b>0682 103 803</b>
MP 450, 450 A (35%)	<b>0000 419 450</b>



## Eco Clamps

An earth clamp that provides good contact with the work piece and is available in two sizes.

Eco clamp 250, 250 A (35%)	<b>0700 006 001</b>
Eco clamp 400, 400 A (35%)	<b>0700 006 002</b>



## Return Clamp EG 600 and JK3

The EG 600 is an extremely robust earth clamp made of brass. The welding cable is attached using a hexagonal socket screw and the clamp has a maximum opening of 50mm and a maximum capacity of 600 amperes. The JK3 is a C-clamp model, galvanised and with a maximum opening of 48mm and maximum capacity of 500 amperes.

EG 600, 600 A (35%)	<b>0160 288 001</b>
JK3, 500 A (35%)	<b>0000 103 588</b>



## Return Clamp CC11

This clamp is robustly constructed from substantial castings. The screw lever allows maximum compression to the workpiece. Suitable for up to 600 amps.

CC11 Screw Type Earth Clamp	<b>0701 400 000</b>
-----------------------------	---------------------



## Magnetic Earth Clamps

Magnetic earth clamps with strong gripping power that permits attachment to any ferrous object. These clamps provide a large contact area with less overheating thanks to fewer junctions.

Magnetic earth clamp 400 A (35%)	<b>0000 500 415</b>
Magnetic earth clamp 600 A (35%)	<b>0000 500 416</b>

# Couplings & Clamps for Rotating Workpieces



## Rotatable Earth Couplings

A good connection to the workpiece is needed to obtain optimal manual or automatic welding. For rotating workpieces, an earth connection with a rotatable earth coupling is the safest choice. A range of current couplings is available. To attach the coupling to the workpiece, special clamps are available. (Please see: Return clamps for rotating workpieces).

NKK 400 - max 400 A, (1.65kg)	<b>0000 595 133</b>
NKK 600 - max 600 A, (2.2kg)	<b>0700 004 007</b>
NKK 800 - max 800 A, (2.7kg)	<b>0700 004 001</b>
NKK 1200 - max 1200 A, (4.0kg)	<b>0700 004 002</b>
NKK 2000 - max 2000 A, (7.3kg)	<b>0700 004 003</b>



## Return Clamps for Rotating Workpieces

The earth clamps K2 or PZ3 can be mounted directly on to the rotatable earth coupling to create a good contact between the work piece and the return cable. The return clamps can also be used together with the GA 800 to form a complete earth clamp that can handle high current welding on non-rotating work pieces.

GA 800 - handle connection for K2	<b>0700 004 005</b>
-----------------------------------	---------------------



K2 - clamp head for NKK 800 or 1200	<b>0700 004 004</b>
-------------------------------------	---------------------



PZ3 - pole clamp for NKK 2000	<b>0700 004 006</b>
-------------------------------	---------------------

# Anti Spatter



## ESAB Pre-Weld Anti Spatter

The ESAB Pre-Weld fluid is so much more than a traditional anti spatter. ESAB have managed to develop a product that has a much higher concentration of the active substance than any other product available. The product does not evaporate off the work piece, it gives extraordinary protection all the way from the very edge of the weld and out across the work piece. But still the product is completely safe, no dangerous/harmful substances are included. The fluid is absolutely silicon free and water-soluble, there are no problems with painting or with any other after treatments. The spray can contains 600 ml of active fluid, no solvents. The fluid is kept in an aluminium bag inside the can. The pressure surrounding the bag forces the fluid out when the valve is opened. This allows the can to be sprayed at any angle and still allows you to get every drop of fluid from the can. Note that it is only active fluid that is released, this is what makes the product so efficient.

ESAB Pre-Weld anti spatter 600 ml	<b>0700 013 013</b>
ESAB Pre-Weld anti spatter 10 litre	<b>0700 013 014</b>
ESAB Pre-Weld anti spatter 25 litre	<b>0700 013 015</b>
Tap for 10 litre	<b>0700 014 017</b>
Tap for 25 litre	<b>0700 014 018</b>
Hand spray bottle	<b>0000 138 408</b>



## ESAB High-Tech Anti Spatter

Combines uncompromising efficiency with active environmental and health protection. The High-Tech spray effectively prevents spatter from sticking on the work piece. The High-Tech weld-protect air-spray is absolutely non-combustible, has no toxic classification, uses no harmful gases and is safe for the skin. The propellant is compressed air, it is solvent free and gives no indirect air pollution or contribution to the greenhouse effect. It is absolutely silicon-free and water-soluble.

High-Tech 400 ml	<b>0760 025 500</b>
High-Tech 10 litre	<b>0760 025 010</b>
High-Tech 25 litre	<b>0760 025 025</b>
Tap for 10 litre	<b>0700 014 017</b>
Tap for 25 litre	<b>0700 014 018</b>
Hand spray bottle	<b>0000 138 408</b>



## ESAB Eco-Tech Anti Spatter

The ESAB Eco-Tech is a high performing anti spatter spray, which is completely safe, both for the welder and environment. The propellant is compressed air, hence it is completely none-combustible. The solvent free liquid should be applied in a thin layer before welding. The Eco-Tech is water based and does not contain anything that can interfere with painting, galvanising or any other after treatments.

ESAB Eco-Tech anti spatter 300 ml	<b>0700 013 007</b>
ESAB Eco-Tech anti spatter 10 litre	<b>0700 013 008</b>
ESAB Eco-Tech anti spatter 25 litre	<b>0700 013 009</b>
Tap for 10 litre	<b>0700 014 017</b>
Tap for 25 litre	<b>0700 014 018</b>
Hand spray bottle	<b>0000 138 408</b>

# Chemical Sundries & Indicators



## ESAB Jig and Tool Protection

The ESAB Jig and Tool protection prolongs the lifetime of the welding shroud and contact tip as well as giving an extremely good protection to tools and jigs. The spray dries quickly and leaves a heat resistant layer (1300°C) and it does not burn off. Hardly any spatter sticks to the surface and if it does, a gentle wipe with the glove will remove it.

ESAB Jig and Tool protection, 400 ml

**0700 013 016**



## ESAB Spatter Shield

The ESAB Spatter shield prolongs the lifetime of the welding shroud and contact tip. Apply the fluid by dipping the torch and let the fluid dry. The fluid creates a heat resistant layer that prevents spatter from sticking. The spatter shield should be applied 2-3 times per 8-hour shift to give protection. Unlike tip dip products, when using the ESAB spatter shield you will NOT experience any problems with porosity created by drops of anti spatter falling down into the weld.

ESAB Spatter shield, 250 ml

**0700 013 017**



## Clean Weld Welding Paste

Prevents spatter from sticking as it forms a heat-resistant coat. The hot gas nozzle on the welding torch should be dipped about 20-25mm into the paste for effective results. Odourless and contains no solvents, silicone or abrasive agents and is delivered in a 0.5kg metal can.

Clean Weld welding paste, net weight 0.5kg

**0365 560 001**



## Non Destructive Testing Aerosols

The ESAB NDT testing should be used to identify cracks in a weld. The process consists of 6 steps and to perform the test a cleaner, a penetrant and a developer is required. The procedure should be as follows:

1. Use ESAB cleaner and wipe dry.
2. Spray ESAB Penetrant, leave for 15 min.
3. Wipe away the penetrant from the surface.
4. Use the cleaner in a dry cloth, wiping in one direction only. Wipe dry.
5. Shake and then spray on the developer, leave for 10 min then see results.
6. Remove the developer and dye using the cleaner.

ESAB NDT Penetrant 300 ml Aerosol

**0700 013 018**

ESAB NDT Developer 400 ml Aerosol

**0700 013 019**

ESAB NDT Cleaner 300 ml Aerosol

**0700 013 020**

# Chemical Sundries & Indicators



## ESAB Leak Detector

The ESAB gas leak detector can be used on the gas hoses leading from the gas cylinders or on the regulators in order to detect a gas leakage. The product is sprayed on and in case of a leakage the liquid will create bubbles. The composition does NOT contain any aggressive substances.

ESAB Leak Detector Pistol Type, 500 ml

**0700 013 021**



## ESAB Mask Spray

The ESAB mask spray should be applied to the cover lenses in a helmet to keep them mist free and clean. 300 ml.

Mask spray, 300 ml

**0700 013 026**



## Weld Marker

The ESAB weld marker marks all metal, wood, plastic, glass and hard surfaces. Low chloride colour makes it safe for marking stainless steel. Do not roll tube. Dries in five minutes.

Weld marker, white

**0700 013 003**

Metal marker, yellow

**0701 415 418**



## Weld Marker Kit

The weld marker kit consists of three differently coloured pens, red, green and black. The pens can be used on most types of material.

Weld marker kit

**0700 013 004**

# Chipping Hammers



## Pneumatic Chipping Hammer HCB

This high impact speed chipping hammer produces virtually no vibration in the hand as a result of a built-in balance system, which absorbs recoil and counteracts shaking. A range of chisels are available for the HCB, they all have a tungsten-carbide tip and offer a long service life. Narrow chisel: 15mm wide for normal de-slugging and cleaning. Wide chisel: 35mm wide for removing spatter and de-burring after gas cutting.

Chipping Hammer HCB

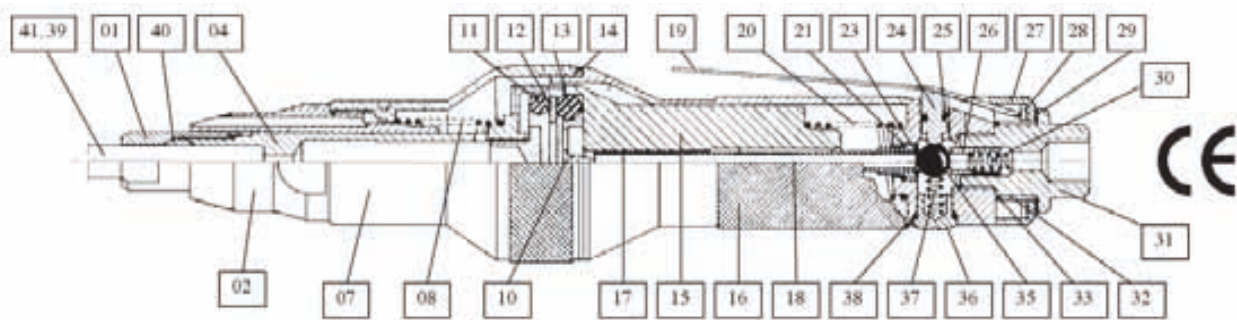
**0193 305 001**

## Spares for Pneumatic Chipping Hammer HCB (Fig 8)

1	Nut HCB	<b>0156 626 001</b>	26	Ball Retainer	<b>0156 626 022</b>
2	Front Housing HCB	<b>0193 306 004</b>	27	Cover HCB	<b>0156 626 023</b>
4	Impact Piston Compl.	<b>0156 626 004</b>	28	Washer HCB	<b>0156 626 024</b>
7	Housing HCB	<b>0156 626 007</b>	29	Securing Ring HCB	<b>0156 626 025</b>
8	Spring HCB	<b>0156 626 008</b>	31	Nipple HCB	<b>0156 626 027</b>
10	Air Feed Valve	<b>0193 306 012</b>	32	Sleeve HCB	<b>0156 626 028</b>
11	O-Ring HCB	<b>0156 626 009</b>	33	O-Ring HCB	<b>0156 626 029</b>
12	Ring Valve HCB	<b>0156 626 010</b>	35	Valveball HCB	<b>0156 626 031</b>
13	O-Ring HCB	<b>0156 626 011</b>	36	Screw HCB	<b>0156 626 032</b>
14	Locking Ring HCB	<b>0156 626 012</b>	37, 30	Spring HCB	<b>0156 626 026</b>
15	Balancing Piston HCB	<b>0156 626 013</b>	38	O-Ring HCB	<b>0156 626 033</b>
16	Housing HCB	<b>0156 626 014</b>	39	Chisel 15 x 100mm	<b>0156 627 001</b>
17	O-Ring HCB	<b>0193 306 014</b>	39	Chisel 35 x 100mm	<b>0156 627 002</b>
18	Tube Compl HCB	<b>0156 626 015</b>	39	Chisel 15 x 200mm	<b>0156 627 006</b>
19	Trigger HCB	<b>0156 626 016</b>	39	Chisel 15 x 300mm	<b>0156 627 007</b>
20	Spring HCB	<b>0156 626 017</b>	40	Clamp Ring HCB	<b>0156 626 034</b>
21	O-Ring HCB	<b>0156 626 018</b>	41	Sound-damping chisel	<b>0156 627 004</b>
23	O-Ring HCB	<b>0156 626 019</b>	*	Chisel extension	<b>0156 627 005</b>
24	Valve Piston	<b>0156 626 020</b>	*	Stopscrew HCB	<b>0156 626 030</b>
25	O-Ring HCB	<b>0156 626 021</b>			

\* Not shown

## Spares for Pneumatic Chipping Hammer HCB Fig 8



# Chipping Hammers & Fillet Gauges



## Chipping Hammer SH2 and SH3

The SH2 chipping hammer is made of special high-quality steel, and has a user-friendly handle. The SH3 is a small hammer with a chisel and tip and steel handle with a plastic grip.

Chipping Hammer SH2	0000 663 000
Chipping Hammer SH3	0683 200 001



## Wooden Chipping Hammers

High quality tempered head and wooden handle. Chisel and point ends.

Martellina Wood	0000 915 051
Wooden Chipping Hammer TH/5	0701 380 106



## Fillet Gauge KL-1 Laser

To measure the A dimension of fillet welds. Two measurement areas: max. 7mm and max. 15mm. Complete with a leather pocket. Delivered with calibration certificate.

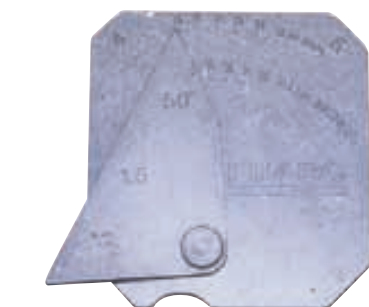
Fillet Gauge KL-1 Laser	0000 139 931
-------------------------	--------------



## Fillet Gauge KL-2 Laser

To measure the A dimension of a fillet welds, the leg (small side of a right-angled triangle) and weld reinforcement height. Complete with leather pocket. Delivered with calibration certificate.

Fillet Gauge KL-2 Laser	0000 139 932
-------------------------	--------------



## Filarc Fillet Gauge

To measure the a-dimension on measurement area 3-11mm, K-dimension and 50° and 60° groove angle. Also on fast measurement 4, 5, 6 and 7mm a-dimension and gaps of 1.5, 2 and 3.5mm.

Filarc Fillet Gauge	0000 593 268
---------------------	--------------

# Fillet Gauges & Small Tools



## INOX Fillet Gauge

To measure the a-dimension of fillet welds and to measure the butted joint weld reinforcement height. Equipped with three scales. Measurement area 0-15mm and measurement sharpness +0,1mm.

INOX Fillet Gauge

**0000 593 720**



## Universal Tool

Pliers specially designed for MIG/MAG welding. Removes spatter from the nozzle, cuts the wire and the tool makes it easy to remove the contact tip and gas shroud.

Universal Tool

**0000 134 716**

Universal Tool Mini

**0000 139 054**



## Fix Pliers

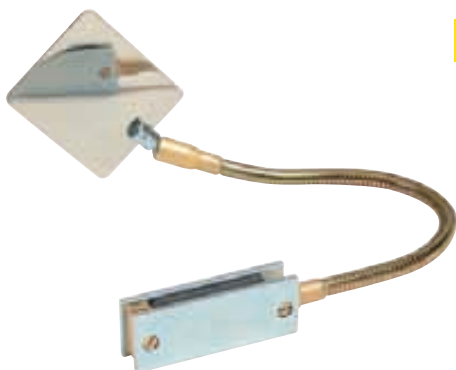
Fast effective cutting of welding wire and removal of burnt wire. Removes spatter from gas and contact nozzle and can be used for attaching and removing of contact, intermediate and gas nozzles.

Fix 1 12-15mm

**0760 022 100**

Fix 2 15-18mm

**0760 022 200**



## Inspection Mirrors

Stainless steel inspection mirror for inspecting welds.

Inspection mirror 500mm, with magnetic base

**0000 595 319**

# Small Tools



## MIG/MAG Gun Holder

The MIG/MAG gun holder is a simple and practical device for the convenient holding of the MIG/MAG gun when not in use. It is equipped with a magnetic foot for stability and is suitable for use with most MIG/MAG welding guns.

MIG/MAG Gun Holder

**0760 022 300**



## TIG Torch Holder

The TIG torch holder is a simple and practical device for the convenient holding of the TIG torch when not in use. It is equipped with a magnetic foot for stability and is suitable for use with most TIG torches.

TIG Torch Holder

**0760 022 400**



## Magnetic Position Holders

The powerful magnets keep the work piece in place when welding or soldering plates together at angles. The large model can support weights up to 36kg whilst the small one can support up to 20kg.

Magnetic Position Holder small (120 x 80mm)

**0700 014 015**

Magnetic Position Holder large (160 x 100mm)

**0700 014 016**



## Murex Nozzle Cleaner Set

Prolongs the life of welding and cutting nozzles. Murex nozzle cleaner does not file the nozzle bore. Each set contains a range of nozzle cleaners from 0.46mm to 1.74mm.

Nozzle Cleaner Set

**0700 153 391**

# Small Tools



## Murex Combination Spanner

For use with Murex gas equipment. Fits Kennedy nut, hose nut and cylinder valve.

Combination Spanner

**0701 414 766**



## Murex Spindle Key

Provides the correct leverage for opening cylinder valves.

Spindle Key K5

**0701 380 120**



## SL3 Cup Sparklighter

A standard cup type sparklighter.

SL3 Cup Sparklighter

**0701 380 220**

SL3 Flints Pk 5

**0701 380 221**

## SL2 Sparklighter Pistol

A pistol type sparklighter.

SL2 Sparklighter Pistol

**0700 154 807**

Flints Pk 9 (SL2)

**0700 119 695**



## Wire Brushes

Lightweight, easy-to-use steel brushes with wooden handles. Available with two, three or four rows of bristles.

Two-row mild steel brush

**0760 024 100**

Three-row mild steel brush

**0760 024 200**

Four-row mild steel brush

**0760 024 300**

Two-row stainless steel brush

**0760 024 500**

Three-row stainless steel brush

**0760 024 600**

Four-row stainless steel brush

**0760 024 700**

# Cylinder Trolleys

## Cylinder Trolleys

All cylinder trolleys have a hardwearing red epoxy coated finish and chains to hold the cylinder upright. Large rugged wheels mean the trolley can be wheeled over the roughest ground.



### TR3 Trolley

Takes one oxygen and one Acetylene cylinder.

TR3 Trolley	0700 014 042
-------------	--------------



### Oxy/Propane Trolley

Takes one oxygen and one Propane cylinder.

Oxy/Propane Trolley	0700 014 043
---------------------	--------------



### Universal Single Trolley

Takes one standard cylinder.

Universal Single Trolley	0700 014 044
--------------------------	--------------



# ***Special Process Equipment***

Completing the extensive accessory portfolio from ESAB is our Special Process Equipment range, which includes tungsten grinders, gouging torches and fume extraction units. As with all our products our Special Process Equipment range conforms to all relevant EU legislation and standards.

# ESAB Drying Equipment



## DS5 Dry-Storage Container

The DS5 is a very light and portable dry-storage container for welding electrodes. The container has a multi-position handle offering numerous carrying positions, for increased comfort.

The oven utilises a 150°C preset thermostat, and houses a fibreglass sleeved rope heating element, which extends along the entire oven chamber. This provides uniform heating to all rods with in the oven chamber.

Capacity	5kg
Storage temp. (°C)	150
Voltage (V) AC	120/240
Insulation	3.8cm
Outer dimension (Ø/height, mm)	150/520
Inner dimension (Ø/height, mm)	73/503
Weight (kg)	4.8

DS5 Dry-Storage Container 240V	<b>0700 011 086</b>
DS5 Dry-Storage Container 110V	<b>0700 011 088</b>



## DS8 Dry-Storage Container

The DS8 is a very light and portable dry-storage container for welding electrodes. The container has a multi-position handle offering numerous carrying positions, for increased comfort.

The oven utilises a 150°C preset thermostat, and houses a fibreglass sleeved rope heating element, which extends along the entire oven chamber. This provides uniform heating to all rods with in the oven chamber.

Capacity	8kg
Storage temp. (°C)	150
Voltage (V) AC	120/240
Insulation	3.8cm
Outer dimension (Ø/height, mm)	216/609
Inner dimension (Ø/height, mm)	86/503
Weight (kg)	5.5

DS8 Dry-Storage Container 240V	<b>0700 011 087</b>
DS8 Dry-Storage Container 110V	<b>0700 011 089</b>



## PK 1 Dry-Storage Container

The PK 1 is a light and handy dry-storage container for electrodes. It is easy to carry and has a storage temperature of around 100°C. The heating element runs from the top to the bottom and the top is fully insulated.

Capacity	9kg
Storage temp. (°C)	100
Drying temp. (°C)	N/A
Voltage (V)	24/42/110/230
Output (kW)	0,1
Outer dimension (Ø/height, mm)	225/610
Inner dimension (Ø/height, mm)	100/470
Weight (kg)	6

PK 1, 24 V	<b>0000 515 063</b>
PK 1, 42 V	<b>0000 515 052</b>
PK 1, 110 V	<b>0000 515 062</b>
PK 1, 230 V	<b>0000 515 064</b>



## PK 5 Drying Equipment

The PK 5 is a combined drying and dry-storage system for most types of electrodes. The drying time at full effect is 1-7 hours depending on the type of electrode. The temperature is thermostatically controlled and ranges from 50-300°C. The electrodes should be stored in the PK 5 without packaging. The heating element runs from the top to the bottom and the top is fully insulated.

Capacity	24kg
Storage temp. (°C)	70-300
Drying temp. (°C)	N/A
Voltage (V)	110/230
Output (kW)	0,5
Outer dimension (Ø/height, mm)	345/660
Inner dimension (Ø/height, mm)	116/460
Weight (kg)	13

PK 5 drying equipment, 110 V	<b>0700 011 070</b>
PK 5 drying equipment, 230 V	<b>0000 515 075</b>



## SK 40 Dry-Storage Cabinet

The SK 40 is a dry-storage cabinet with 4 removable shelves for storing electrodes. The electrodes should be stored without packing. The cabinet is equipped with a thermometer, thermostat and control lamp. Temperature range 50-180°C.

Capacity	120kg
Storage temp. (°C)	50-180
Drying temp. (°C)	N/A
Voltage (V)	230
Output (kW)	0,7
Outer dimension (WxDxH, mm)	530 x 640 x 750
Inner dimension (WxDxH, mm)	470 x 510 x 520
Weight (kg)	55

SK 40 dry-storage cabinet, 230 V	<b>0000 515 102</b>
----------------------------------	---------------------

# ESAB Drying Equipment



## PK 40 Drying Cabinet

The PK 40 is a robust cabinet for the drying and dry storage of electrodes, with space for 10 packs. The drying time is set manually at between 50 and 350°C. Dimensions 570 x 620 x 790mm. Weight 70kg.

Capacity	72kg
Drying temp. (°C)	50-350
Voltage (V)	230
Output (kW)	1,5
Outer dimension (WxDxH, mm)	570 x 620 x 790
Inner dimension (WxDxH, mm)	460 x 510 x 520
Weight (kg)	70

PK 40 drying cabinet, 230 V

**0000 515 105**



## PK 410 Drying Cabinet

The PK 410 is a robust cabinet for the drying and dry storage of electrodes. The drying temperature can be regulated between 50 and 400°C (450°C, 3-phase). The dry-storage temperature is around 150°C. The PK 410 is equipped with a control lamp, electronic thermometer and electronic thermostat. The PK 410 also has a 7-day timer. This timer makes it possible to change automatically from drying to dry storage at selected times and temperature ranges.

### 230V

Capacity	252kg
Storage temp. (°C)	50-400
Drying temp. (°C)	50-400
Voltage (V)	230
Output (kW)	3,5
Outer dimension (WxDxH, mm)	860 x 760 x 1280
Inner dimension (WxDxH, mm)	655 x 485 x 635
Weight (kg)	230

### 400V

Capacity	252kg
Storage temp. (°C)	50-400
Drying temp. (°C)	50-400
Voltage (V)	400-3
Output (kW)	4,5
Outer dimension (WxDxH, mm)	860 x 760 x 1280
Inner dimension (WxDxH, mm)	665 x 485 x 635
Weight (kg)	230

PK 410 drying cabinet, 230 V, 1-phase

**0000 515 103**

PK 410 drying cabinet, 400 V, 3-phase

**0000 515 108**

# ESAB Drying Equipment



## JS 200 Storage Silo

The JS 200 is a storage silo for welding powder (flux). The JS 200 keeps the flux dry and clean and also makes it extremely easy to handle the flux. The temperature can be adjusted between 100 and 300°C.

Capacity	200 Lt
Storage temp. (°C)	100-300
Drying temp. (°C)	N/A
Voltage (V)	230
Output (kW)	2
Outer dimension (WxDxH, mm)	510 x 570 x 1755
Weight (kg)	110

JS 200 storage silo **0000 515 090**

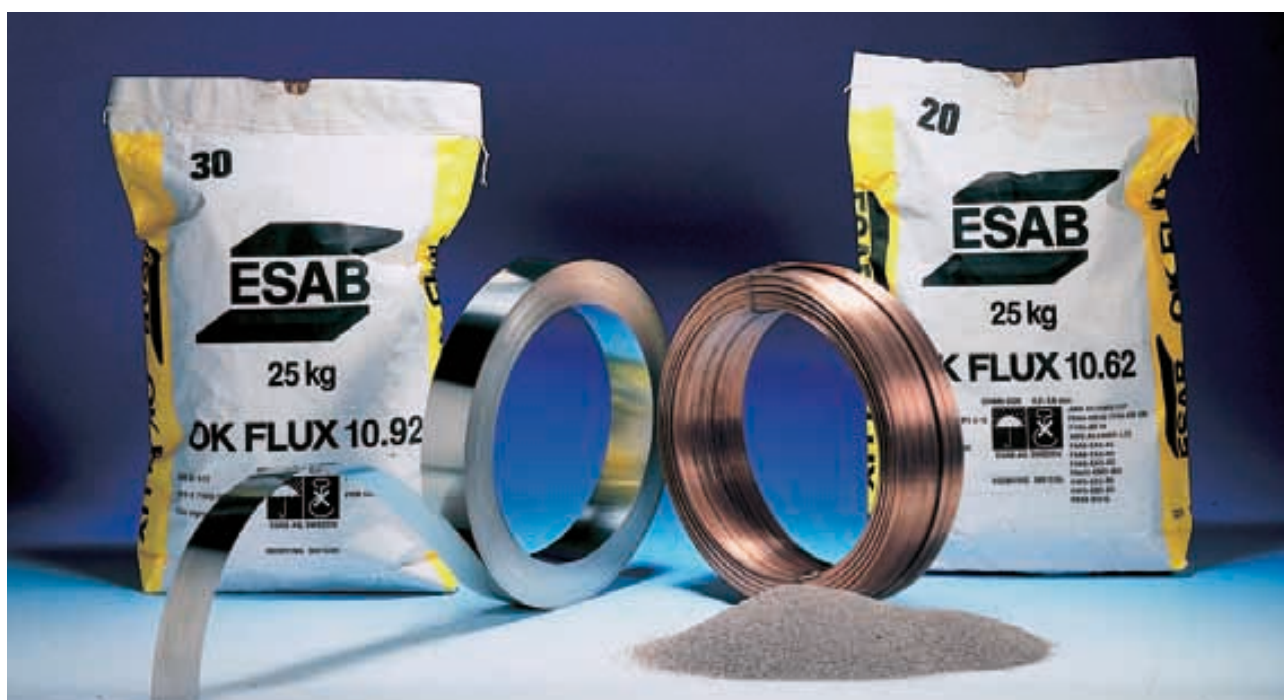


## JK 50 Powder Drier

The JK 50 is a container for drying and storing welding powder (flux). The JK 50 dries 50 litre flux at a maximum temperature of 500°C in around three hours. After drying, the temperature falls automatically to the pre-set dry storage temperature (150°C) within 12 hours.

Capacity	50 Lt
Storage temp. (°C)	50-250
Drying temp. (°C)	50-500
Voltage (V)	400-3
Output (kW)	3,7
Outer dimension (Ø/height, mm)	860/1600
Weight (kg)	190

JK 50, 400 V, 3-phase **0000 515 091**



# Murex Drying Equipment



## Quivers

Heated Quivers are designed for use on installations with 100 volt or 240 volt supply. The quiver will maintain an even temperature of 100°C dependant on the amount of electrodes stored. Complete with handle/stand.

Supply	110v or 110/240v. AC 50/60Hz
Load	150 watts
Overall dimensions (WxDxH, mm)	120 x 500 x 110
Weight Empty	3 Kilo
Capacity	9kg of Welding Electrodes

Heated Quiver 110 V	<b>0701 380 485</b>
Heated Quiver 110/240V	<b>0701 380 486</b>
Insulated Heated Quiver 240v	<b>0701 502 358</b>



## Portable Drying Oven – Dual Voltage

This oven is designed for rugged site conditions, where it can be used as either a holding or storage oven.

Temperature range	100-300°C thermostatically controlled
Supply	110.240v. (Dual voltage)
Load	300 watts
Overall dimensions (WxDxH, mm)	175 x 610 x 210
Internal dimensions (WxDxH, mm)	115 x 480 x 150
Weight Empty	10 Kilo
Capacity	13kg of Welding Electrodes

Portable Drying Oven – Dual Voltage	<b>0701 380 083</b>
-------------------------------------	---------------------



## Stationary Drying Oven

These ovens can be used as the sole means of drying or as the intermediary, until transferred to a portable oven or a quiver.

Temperature range	100-300°C thermostatically controlled
Supply	110v or 250v AC. 50/60Hz
Load	1500 watts
Overall dimensions (WxDxH, mm)	520 x 620 x 610
Internal dimensions (WxDxH, mm)	455 x 470 x 455
Weight Empty	42 Kilo
Capacity	136kg of Welding Electrodes

Stationary Drying Oven 250V AC	<b>0700 655 258</b>
Stationary Drying Oven 110V AC	<b>0700 655 259</b>

# Alternative Drying Ovens



## Stationary Drying Oven Digital

As the Stationary Oven, but with a digital display.

Temperature range	0-300°C thermostatically controlled
Supply	110/240v
Load	2250 watts
Overall dimensions (WxDxH, mm)	530 x 620 x 620
Internal dimensions (WxDxH, mm)	465 x 480 x 465
Weight Empty	45kg
Capacity	136kg of Welding Electrodes
Digital Display	YES

Stationary Oven Digital 250V AC

**0701 502 381**

## High Temperature Ovens

The robust, high temperature oven has a digital display. It has accurate temperature control from 0 – 500°C. Visual temperature indication is by the digital display. Temperature settings are digitally set.

Temperature range	0-500°C thermostatically controlled
Supply	110 or 240v
Load	3 Kw
Outer dimensions (WxDxH, mm)	600 x 685 x 760
Internal dimensions (WxDxH, mm)	470 x 480 x 470
Weight Empty	75kg
Capacity	136kg of Welding Electrodes
Digital Display	YES

High Temp Oven – Digital Display

**0701 380 408**

### As above but with Chart Recorder

Storage Temperature	0-500°C
Hold Cycle 1	YES
Baking Temperature	0-500°C
Hold Cycle 2	YES
Supply	110 or 240v
Load	3 Kw
Delay Timer	7-Day Programmable
Chart Recorder	Optional
Outer dimensions (WxDxH, mm)	600 x 685 x 760
Internal dimensions (WxDxH, mm)	470 x 480 x 470
Weight Empty	75kg
Capacity	136kg of Welding Electrodes
Digital Display	YES

High Temp Oven – CR DD Timer

**0701 380 410**

# Spare Parts

## Spare Parts for ESAB PK1

Heating Element 24V	0700 011 001	Signal Lamp 110V	0700 011 007
Heating Element 42V	0700 011 002	Signal Lamp 230V	0700 011 008
Heating Element 110V	0700 011 003	Hinged Lid	0700 011 010
Heating Element 230V	0700 011 004	Knob	0700 011 011
Signal Lamp 24V	0700 011 005	Handle	0700 011 012
Signal Lamp 42V	0700 011 006		

## Spare Parts for ESAB PK5

Heating Element	0700 011 015	Thermostat	0700 011 017
Signal Lamp	0700 011 016	Thermometer	0700 011 018

## Spare Parts for ESAB SK40

Heating Element	0700 011 020	Thermostat	0700 011 023
Signal Lamp Red	0700 011 021	Thermometer	0700 011 024
Signal Lamp Green	0700 011 022		

## Spare Parts for ESAB PK40

Heating Element, Top	0700 011 071	Thermostat	0700 011 073
Heating Element, Bottom	0700 011 072	Contactator	0700 011 074

## Spare Parts for ESAB PK410

EMC-Filter	<b>0700 011 039</b>	Controller	<b>0700 011 045</b>
Heating Element, Top	<b>0700 011 040</b>	Sensor	<b>0700 011 046</b>
Heating Element, Bottom	<b>0700 011 041</b>	Timer	<b>0700 011 047</b>
Signal Lamp Green Big	<b>0700 011 042</b>	Contactor	<b>0700 011 048</b>
Signal Lamp Red Big	<b>0700 011 043</b>	Main Switch	<b>0700 011 049</b>
Signal Lamp Red, Small	<b>0700 011 044</b>	Auto-Manual Switch	<b>0700 011 050</b>

## Spare Parts for ESAB JS200

Heating Element	<b>0700 011 030</b>	Thermostat	<b>0700 011 032</b>
Signal Lamp	<b>0700 011 031</b>	Thermometer	<b>0700 011 033</b>

## Spare Parts for JK50

Heating element	<b>0700 011 082</b>
-----------------	---------------------

## Spare Parts for Murex Drying Equipment

Element Stat Oven 240v Pk 2	<b>0701 380 149</b>	Element 240V Kit (Portable Oven)	<b>0701 411 237</b>
Element 110V (Quiver)	<b>0701 380 487</b>	Thermostat 110/240V (Ovens)	<b>0701 411 240</b>
Toggle Switch (Quiver)	<b>0701 380 488</b>		

# Tungsten Grinders



## G-Tech Handy II

The G-Tech Handy II is a portable enclosed Tungsten Electrode grinder, which is easy to operate. The Tungsten electrode can be ground without using a holder or tool. The grinding head can be adjusted in three different positions: 0, 1 and 2. In each position another part of the grinding disc will be used, and both sides of the disc can be utilised, giving extended use and reduced cost.

The G-Tech Handy II features a multifunctional cover, which allows the electrode to be ground in a 90° angle. The machine is prepared for fixing to a table using the accessories included.

The G-Tech Handy II is delivered complete for grinding of tungsten electrodes in the dimension of 1,6 – 2,0 - 2,4 - 3,2mm. A head for grinding of 1,0 – 4,0 – 4,8 – 6,0mm electrodes can be supplied as an option.

The G-Tech Handy II features:

Ergonomic Design & Lightweight

Adjustable Grinding Angles (20° - 60°)

Double Sided Grinding Disc – Coated with Diamante Powder

Allows Exact Repetition of Longitudinal Grinding

Can be Connected to a Vacuum Cleaner

Option: Orbital-Set for Grinding of Short Tungsten-Electrodes with a length up to 15mm Max

G-Tech Handy II Complete 240V/50Hz

**0700 009 886**

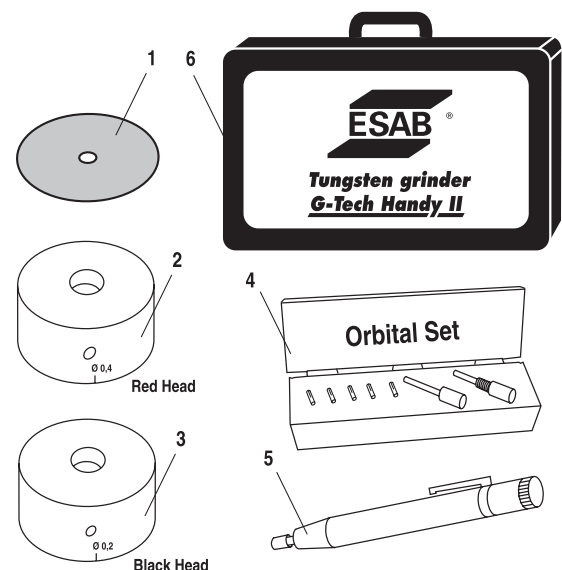
G-Tech Handy II complete US version with 120V/50Hz

**0700 009 067**

## Spares for G-Tech Handy II (Fig 9)

1 Grinding Disc	<b>0700 009 068</b>
2 Second Head for Diameters 1, 0/4, 0/4, 8/6, 0mm Red	<b>0700 009 069</b>
3 Replacement Head for Diameters 1, 6/2, 0/2, 4/3, 2mm Black	<b>0700 009 070</b>
4 Orbital set for Grinding of Short Tungsten Electrodes	<b>0700 009 071</b>
5 Clamp Holder 'Spannfix' Size I (85mm)	<b>0700 009 072</b>
6 Solid Metal Box 'ESAB'	<b>0700 009 073</b>

Spares for G-Tech Handy II Fig 9



### Contents:

- Tungsten Grinder
- Tungsten Holder
- Allen Keys x 2
- Spanners x 3
- Bench Mount
- Hoover Hose Connection

# Tungsten Grinders



## G-Tech Handy

The G-Tech Handy is an easy to use tungsten electrode grinder. The grinding angle can be adjusted easily, using just one hand. The G-Tech Handy grinds electrodes with dimensions of 1.0 to 4.0mm and it is equipped with a dust filter. The speed (rpm) can be adjusted and the unit weighs just 2.8kg. The G-Tech Handy is delivered in a durable hard case that makes it easy to transport.

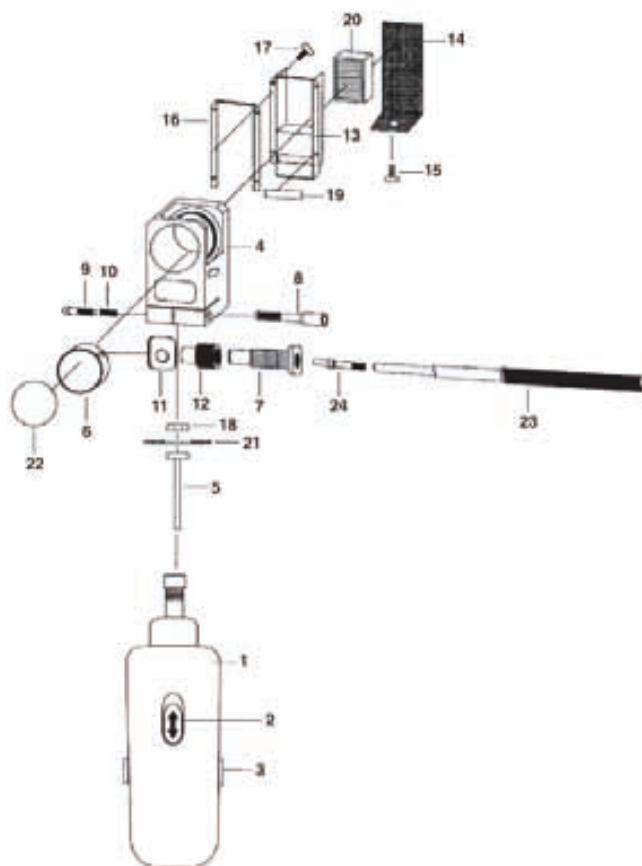
G-Tech Handy, 230 V, 50 Hz

**0700 009 883**

## Spares for G-Tech Handy (Fig 10)

1	Motor 230 V	0700 009 041
2	ON/Off switch	0700 009 065
3	Carbon brush	0700 009 064
4	Grinding head	0700 009 045
5	Spindle for diamond disc	0700 009 046
6	Grinding chamber	0700 009 047
7	Guide for electrode holder	0700 009 048
8	Allen key	0700 009 049
9	Allen screw	0700 009 050
10	Spring	0700 009 056
11	Grinding position selector	0700 009 051
12	Screw	0700 009 052
13	Filter housing	0700 009 053
14	Filter cover	0700 009 054
15	Allen key to fit the filter cover	0700 009 055
16	Rubber seal big	0700 009 057
17	Screw to fit filter cassette	0700 009 058
18	Screw to fit diamond disc	0700 009 059
19	Rubber seal small	0700 009 060
20	Filter cassette	0700 009 029
21	Diamond disc	0700 009 028
22	Inspection glass	0700 009 037
23	Electrode holder	0700 009 030
24	Collet body 1,0mm	0700 009 034
24	Collet body 1,6mm	0700 009 031
24	Collet body 2,0mm	0700 009 035
24	Collet body 2,4mm	0700 009 032
24	Collet body 3,2mm	0700 009 033
24	Collet body 4,0mm	0700 009 036
	Case for the machine (not shown)	0700 009 061

SPARES FOR G-TECH HANDY Fig 10



# Tungsten Grinders & Electrodes



## G-Tech and Spares

The ESAB G-Tech is a tungsten-electrode grinder with a unique enclosed wet-grinding system. A wet grinding system is the most effective protection from thoriated tungsten grinding dust. All dust is collected in the liquid and the risk of oxidation of the electrode is reduced. The grinding angle can be adjusted and the tip can be ground in a 90 degrees angle to make it less pointed. The small table seen in the picture is not included and is not available from ESAB.

G-Tech 230V, 50Hz	<b>0700 009 880</b>
G Tech 115V 50Hz (UK)	<b>0700 009 881</b>
Gasket	<b>0700 009 001</b>
Diamond Disc, G-Tech (inc nut)	<b>0700 009 002</b>
Liquid 250 ml	<b>0700 009 004</b>
Return Bottle 250 ml	<b>0700 009 005</b>
Collet Body 1,0mm G-Tech	<b>0700 009 007</b>
Collet Body 1,6mm G-Tech	<b>0700 009 008</b>
Collet Body 2,0mm G-Tech	<b>0700 009 018</b>
Collet Body 2,4mm G-Tech	<b>0700 009 009</b>
Collet Body 3,2mm G-Tech	<b>0700 009 010</b>
Collet Body 4,0mm G-Tech	<b>0700 009 011</b>
Collet Body 4,8mm G-Tech	<b>0700 009 019</b>
T-Piece	<b>0700 009 012</b>
Spacer Piece	<b>0700 009 013</b>
Liquid 5000 ml	<b>0700 009 015</b>
Accessory box complete	<b>0700 009 016</b>
Waste Container	<b>0700 009 017</b>
Accessory box complete	<b>0700 009 020</b>
Inspection Glass	<b>0700 009 037</b>
Kit – Inspection window G-Tech with seal	<b>0700 009 038</b>
Kit – Electrode holder and handle	<b>0700 009 039</b>
Kit – Seal abrasive wheel with seal and 'O' ring	<b>0700 009 040</b>



## TIG Pen

The TIG PEN allows the welder to control the tip of the filler wire with great accuracy even at a long distance from the weld seam and in the process helps the welder to obtain a higher quality weld. It also eliminates waste of the filler wire. The TIG Pen can be used with any wire diameter from 1.0 to 3.2mm

TIG Pen	<b>0700 009 026</b>
---------	---------------------

# Tungsten Electrodes



## Tungsten Electrodes

This is a high-quality range of tungsten electrodes available in thoriated, ceriated, pure and lanthanated (Gold Plus) versions. ESAB tungsten electrodes have excellent welding and ignition properties. They are delivered in plastic boxes, each containing ten electrodes. The electrodes are available in 150 and 175mm lengths.

WT20 1,0 x 175mm (Thoriated)	Red	<b>0151 574 001</b>
WT20 1,6 x 175mm (Thoriated)	Red	<b>0151 574 002</b>
WT20 2,4 x 175mm (Thoriated)	Red	<b>0151 574 003</b>
WT20 3,2 x 175mm (Thoriated)	Red	<b>0151 574 004</b>
WT20 4,0 x 175mm (Thoriated)	Red	<b>0151 574 005</b>
W Pure 1,0 x 175mm	Green	<b>0151 574 008</b>
W Pure 1,6 x 175mm	Green	<b>0151 574 009</b>
W Pure 2,4 x 175mm	Green	<b>0151 574 010</b>
W Pure 3,2 x 175mm	Green	<b>0151 574 011</b>
W Pure 4,0 x 175mm	Green	<b>0151 574 012</b>
WC20 1,0 x 175mm (Ceriated)	Grey	<b>0151 574 036</b>
WC20 1,6 x 175mm (Ceriated)	Grey	<b>0151 574 037</b>
WC20 2,4 x 175mm (Ceriated)	Grey	<b>0151 574 038</b>
WC20 3,2 x 175mm (Ceriated)	Grey	<b>0151 574 039</b>
WC20 4,0 x 175mm (Ceriated)	Grey	<b>0151 574 040</b>
WL15 1,0 x 175mm Gold Plus (Lanthanated)	Gold	<b>0151 574 050</b>
WL15 1,6 x 175mm Gold Plus (Lanthanated)	Gold	<b>0151 574 051</b>
WL15 2,4 x 175mm Gold Plus (Lanthanated)	Gold	<b>0151 574 052</b>
WL15 3,2 x 175mm Gold Plus (Lanthanated)	Gold	<b>0151 574 053</b>
WL15 4,0 x 175mm Gold Plus (Lanthanated)	Gold	<b>0151 574 054</b>
WL15 4,8 x 175mm Gold Plus (Lanthanated)	Gold	<b>0151 574 055</b>
WT20 1,0 x 150mm (Thoriated)	Red	<b>0151 574 201</b>
WT20 1,6 x 150mm (Thoriated)	Red	<b>0151 574 202</b>
WT20 2,0 x 150mm (Thoriated)	Red	<b>0151 574 244</b>
WT20 2,4 x 150mm (Thoriated)	Red	<b>0151 574 203</b>
WT20 3,2 x 150mm (Thoriated)	Red	<b>0151 574 204</b>
WT20 4,0 x 150mm (Thoriated)	Red	<b>0151 574 205</b>
W Pure 1,0 x 150mm	Green	<b>0151 574 208</b>
W Pure 1,6 x 150mm	Green	<b>0151 574 209</b>
W Pure 2,0 x 150mm	Green	<b>0151 574 245</b>
W Pure 2,4 x 150mm	Green	<b>0151 574 210</b>
W Pure 3,2 x 150mm	Green	<b>0151 574 211</b>
W Pure 4,0 x 150mm	Green	<b>0151 574 212</b>
WC20 1,0 x 150mm (Ceriated)	Grey	<b>0151 574 236</b>
WC20 1,6 x 150mm (Ceriated)	Grey	<b>0151 574 237</b>
WC20 2,0 x 150mm (Ceriated)	Grey	<b>0151 574 242</b>
WC20 2,4 x 150mm (Ceriated)	Grey	<b>0151 574 238</b>
WC20 3,2 x 150mm (Ceriated)	Grey	<b>0151 574 239</b>
WC20 4,0 x 150mm (Ceriated)	Grey	<b>0151 574 240</b>

# Gouging Torches



## K4000 (Fig 11)

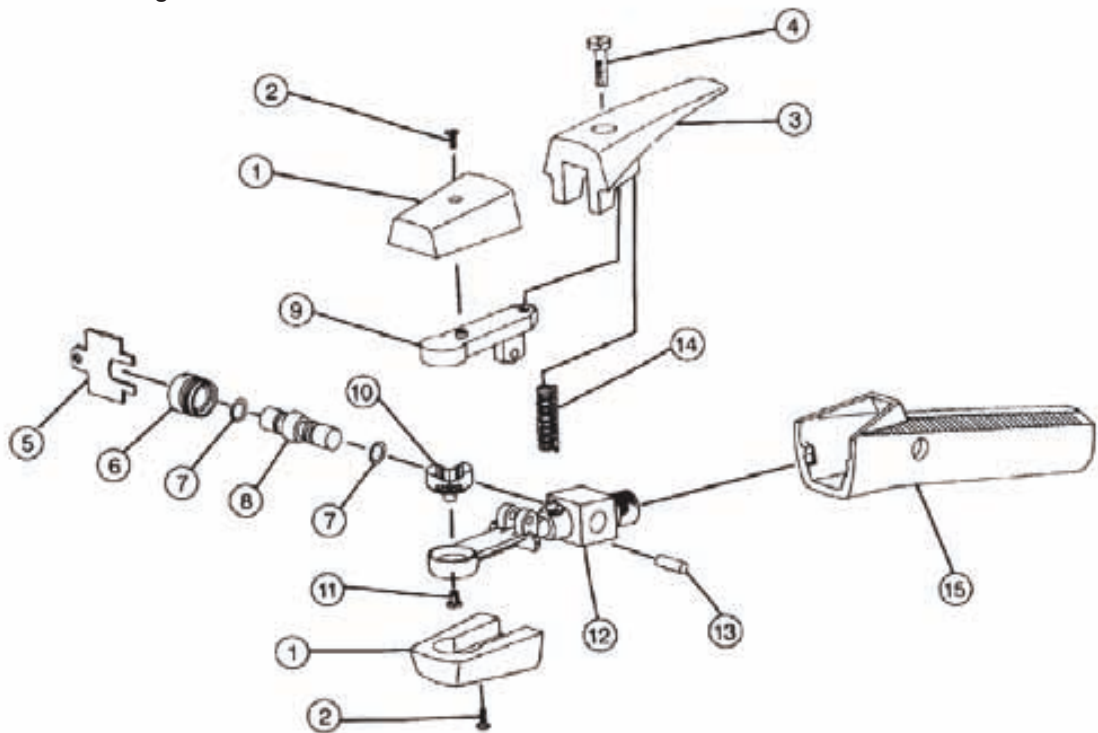
The arc air gouging torch is supplied with a 2.14m (7') long cable. The torch accepts both round and flat electrodes, ranging in size from 4mm (<sup>5</sup>/<sub>32</sub>") to 13mm (<sup>1</sup>/<sub>2</sub>") round electrodes and 10mm (<sup>3</sup>/<sub>8</sub>") and 16mm (<sup>5</sup>/<sub>8</sub>") flat electrodes. The K4000 is rated at 1,000 Amps, it uses compressed air between 5.6 and 7.0kg/cm<sup>2</sup> (80 and 100 psi) and between 0.85 and 0.99 m<sup>3</sup>/min (30 and 35 cfm). The torch and cable weigh 2.4kg (5.4lbs). Supplied without connections.

Gouging torch including monocable	0760 018 100
K4000 torch	0760 018 110
Mono cable K4000	0760 018 119
1 & 2 Insulator assembly	0760 018 101
3 & 4 Lever assembly	0760 018 103
5 to 8 Valve bonnet assembly	0760 018 106
9 Upper arm	0760 018 112
10 & 11 Nozzle	0760 018 113
12 Body	0760 018 115
13 Hinge pin	0760 018 116
14 Spring	0760 018 117
15 Handle	0760 018 118

### Spares for Monocable

'O' Ring kit	0760 018 121
Clamp kit	0760 018 125
Conductor kit	0760 018 126
Hose cover	0760 018 130
Boot insulator	0768 018 131

Spares for K4000 Fig 11



# Gouging Torches



## Flair 600 and 1600

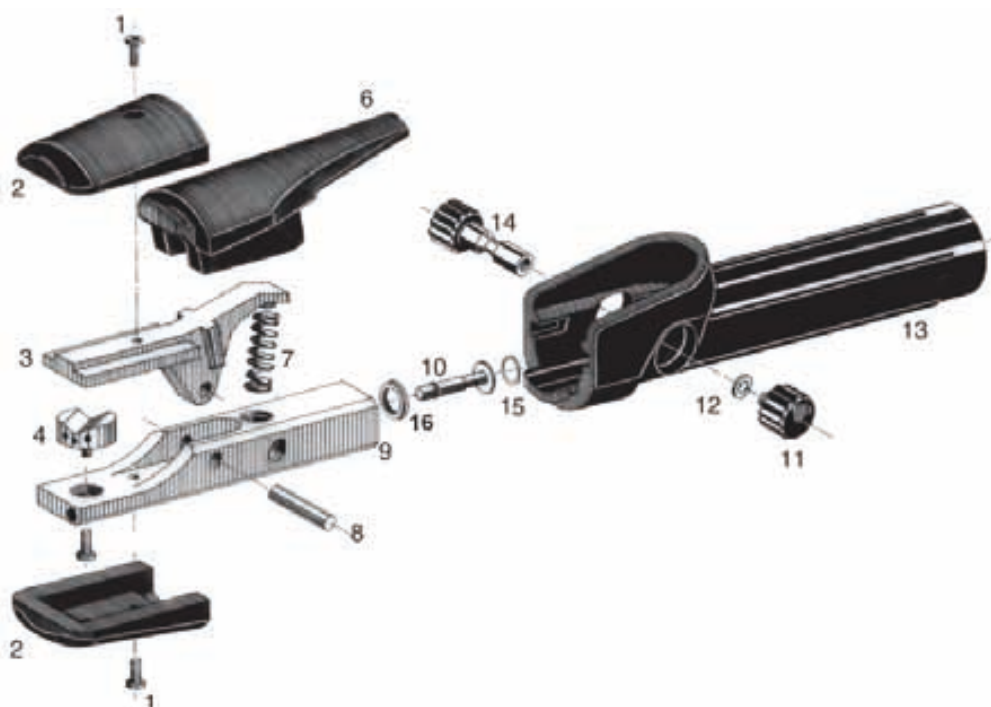
The Flair 600 arc air torch for carbon up to 10mm ( $\frac{3}{4}$ " ) and 4 x 15mm ( $\frac{5}{32} \times \frac{9}{16}$ " ) rectangular. The Flair 1600 arc air torch for carbon up to 19mm ( $\frac{3}{4}$ " ) and 5 x 20mm ( $\frac{3}{16} \times \frac{3}{4}$ " ) rectangular.

Flair 600, incl monocable	0468 253 880
Flair 600 10 metre cable	0700 006 499
Torch only	0468 253 016
Monocable only	0468 253 015
Flair 1600, incl monocable	0468 253 881
Torch only	0468 253 036
Monocable only	0468 253 035

## Spares for Flair 600 (Fig 12)

1	Set of screws	0468 253 001
2	Insulating Caps	0468 253 002
3	Brass Lever	0468 253 003
4	Injection Nozzle	0160 580 001
6	Lever Insulation	0468 253 006
7	Spring	0468 253 007
8	Hinge Pin	0468 253 008
9	Body	0468 253 005
10	Valve	0468 253 010
15 & 16	Valve Seat	0468 253 009
11,12,14	Push Button + Link	0468 253 014
13	Handle	0468 253 013

Spares for Flair 600 Fig 12

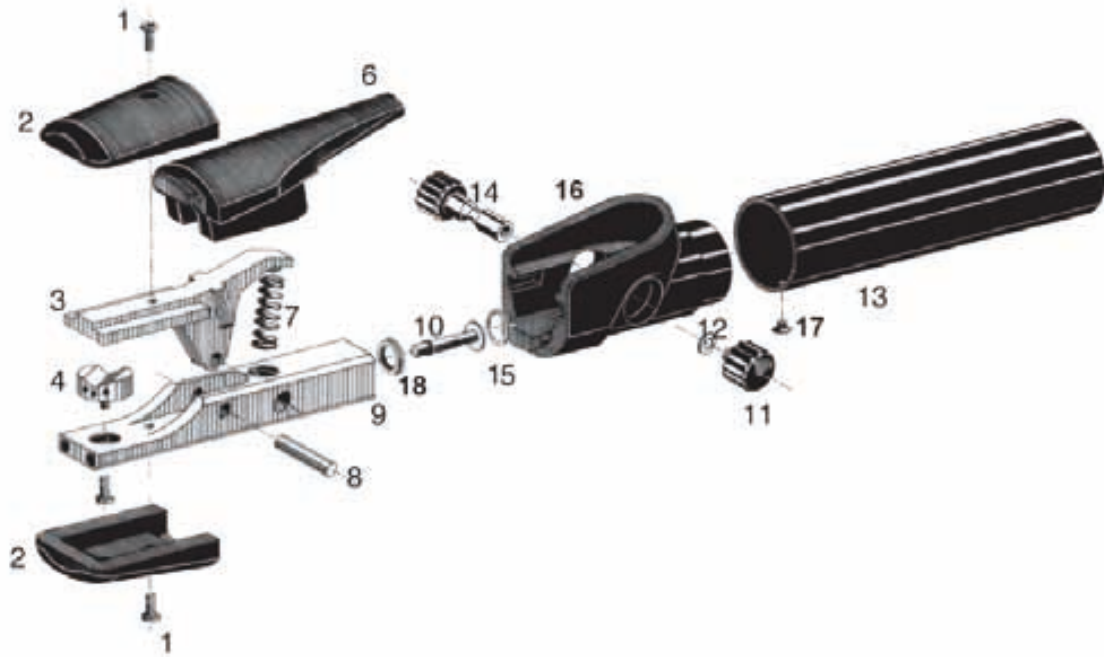


# Gouging Torches

## Spares for Flair 1600 (Fig 13)

1	Set of screws	0468 253 001
2	Insulating Caps	0468 253 002
3	Brass Lever	0468 253 023
4	Injection Nozzle	0468 253 024
6	Lever Insulation	0468 253 006
7	Spring	0468 253 027
8	Hinge Pin	0468 253 008
9	Body	0468 253 025
10	Valve	0468 253 010
15 & 18	Valve Seat	0468 253 009
11,12,14	Push Button + Link	0468 253 014
13,16,17	Handle	0468 253 033

Spares for Flair 1600 Fig 13



# Gouging Carbons



## OK Carbon™

Arc air gouging with carbon electrodes and compressed air is the fastest and cheapest process for cutting/gouging material in conjunction with repairs and similar processes. A carbon electrode is used to melt the material and, at the same time, a powerful jet of air blows away the molten material. The compressed air also cools the carbon electrode. Carbon electrodes can be used for the arc air gouging of unalloyed and low-alloy steel, stainless steel, cast iron and other metals. A complete set of arc air gouging equipment consists of an arc air gouger, the Flair 600 or Flair 1600, alternatively the K4000 with mono cable. OK Carbon™, ESAB's focused but comprehensive range of arc air carbons enables the user to gouge in a wide range of applications, within foundries, steel industry, shipbuilding, steel construction and in maintenance workshops. The OK Carbon™ range gives the user the highest possible efficiency by removal of metal per unit length or unit time.

DC Pointed, 4 x 305mm PK 100	<b>0700 007 002</b>
DC Pointed, 5 x 305mm PK 100	<b>0700 007 003</b>
DC Pointed, 6,35 x 305mm PK 200	<b>0700 007 004</b>
DC Pointed, 8 x 305mm PK 200	<b>0700 007 006</b>
DC Pointed, 10 x 305mm PK 100	<b>0700 007 007</b>
DC Pointed, 6,35 x 5,10mm PK 200	<b>0700 007 104</b>
DC Pointed, 8 x 510mm PK 150	<b>0700 007 106</b>
DC Pointed, 10 x 510mm PK 50	<b>0700 007 107</b>
DC Pointed, 13 x 455mm PK 50	<b>0700 007 108</b>
DC Jointed, 10 x 430mm PK 100	<b>0700 007 410</b>
DC Jointed, 13 x 430mm PK 50	<b>0700 007 411</b>
DC Jointed, 16 x 430mm PK 50	<b>0700 007 412</b>
DC Jointed, 19 x 430mm PK 25	<b>0700 007 413</b>
AC Jointed, 4 x 355mm PK 100	<b>0700 007 414</b>
AC Jointed, 5 x 355mm PK 50	<b>0700 007 415</b>
AC Jointed, 6,35 x 355mm PK 50	<b>0700 007 416</b>
AC Jointed, 8 x 355mm PK 50	<b>0700 007 417</b>
AC Jointed, 9,5 x 355mm PK 50	<b>0700 007 418</b>
DC Rectangular, 4 x 15 x 305mm PK 125	<b>0114 800 112</b>
DC Rectangular, 5 x 15 x 305mm PK 125	<b>0700 007 502</b>
DC Rectangular, 5 X 20 X 305mm PK 100	<b>0700 007 503</b>

# Fume Extraction Units



## CarryVac 2

The CarryVac 2 P150/P150 AST are two small, lightweight, portable extraction units designed to be carried to the working area. Connected to a welding torch or to an extraction nozzle, the CarryVac 2 units extract the fume directly at source. The polluted air is filtered and captured in a hygienically-packed filter. The CarryVac 2 is equipped with a filter indicator, which shows when the filter must be replaced. It is ideal for maintenance welding, low and medium-duty cycle. The filter capacity is approximately 200kg of solid wire or twelve 15kg spools. The CarryVac 2 P150 AST is equipped with an automatic start/stop function, which increases the service life of each filter and of the unit itself. Please also see ESAB Centrovac extraction torch range.

CarryVac 2 P150 220-240V	<b>0700 003 883</b>
CarryVac 2 P150 AST 220-240V	<b>0700 003 884</b>
CarryVac 2 P150 110-120V	<b>0700 003 885</b>
CarryVac 2 P150 AST 110-120V	<b>0700 003 886</b>
Motor 220-240V	<b>0468 455 021</b>
Motor 110-120V	<b>0468 455 022</b>
Hose 45mm, 1.6m	<b>0154 352 015</b>
Hose 45mm, 3.5m	<b>0154 352 008</b>
Hose 45mm, 5m	<b>0154 352 006</b>
Hose 45mm, 15m	<b>0154 352 002</b>
Main filter CarryVac 2	<b>0700 003 004</b>
Main filter CarryVac (previous model)	<b>0468 455 001</b>
Pre filter	<b>0468 455 002</b>
PC-board including cables	<b>0700 003 005</b>
Carbon brushes	<b>0700 003 010</b>
Coarse separator complete	<b>0468 455 014</b>
Suction nozzle TM-80, round 80mm	<b>0700 100 080</b>
Suction nozzle TM-200, 200mm wide	<b>0700 100 200</b>
Suction nozzle PM-300, 300mm wide	<b>0700 100 300</b>
Magnet for suction nozzle	<b>0332 010 880</b>



# Notes



# Notes



# World leader in welding and cutting technology and systems



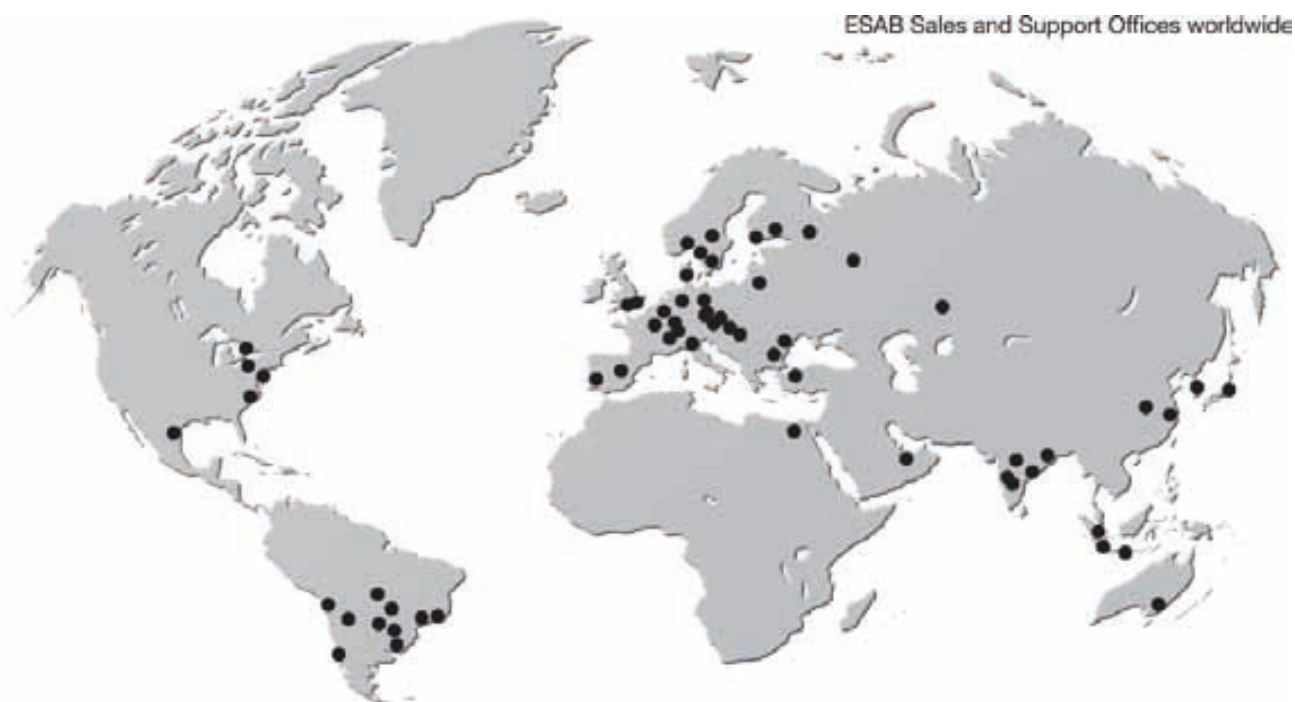
ESAB operates at the forefront of welding and cutting technology. Over one hundred years of continuous improvement in products and processes enables us to meet the challenges of technological advance in every sector in which ESAB operates.

## Quality and environment standards

Quality and the environment are two key areas of focus. ESAB is one of few international companies to have achieved the new ISO 14001 standard

in Environmental Management Systems across all our global manufacturing facilities.

At ESAB, quality is an ongoing process that is at the heart of all our production processes and facilities worldwide. Multinational manufacturing, local representation and an international network of independent distributors brings the benefits of ESAB quality and unrivalled expertise in materials and processes within reach of all our customers, wherever they are located.



\* Includes manufacturing facilities of ESAB North America. A wholly owned subsidiary of Anderson Group Inc.

ESAB reserves the right to alter specifications without prior notice.



Global solutions for local customers – everywhere.

Find out more on [www.esab.com](http://www.esab.com)



Part No: XA00155720  
FMS/105062