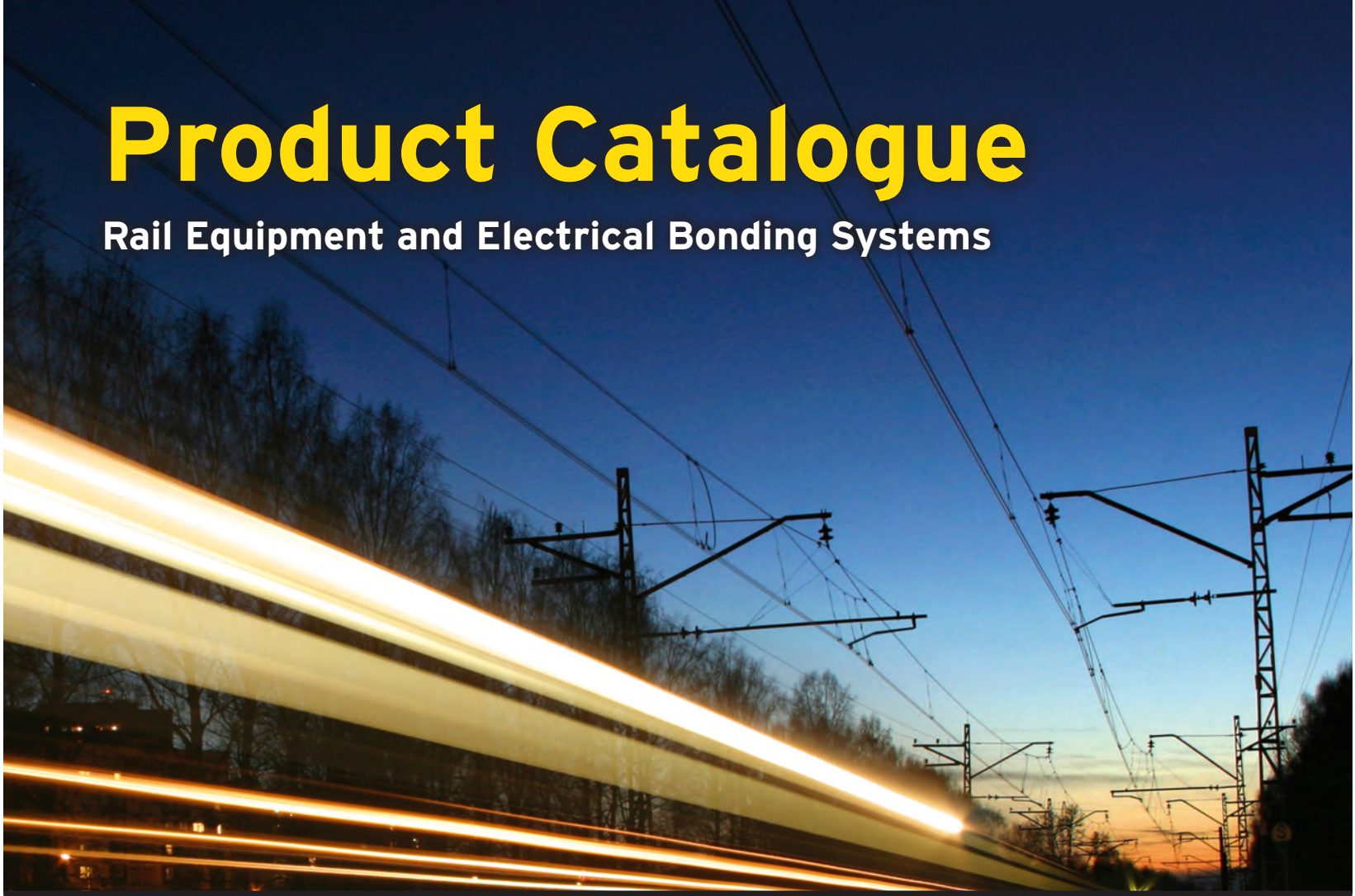




Safely connecting the world ...

Product Catalogue

Rail Equipment and Electrical Bonding Systems



SAFETRACK

Electrical Bonding Technologies

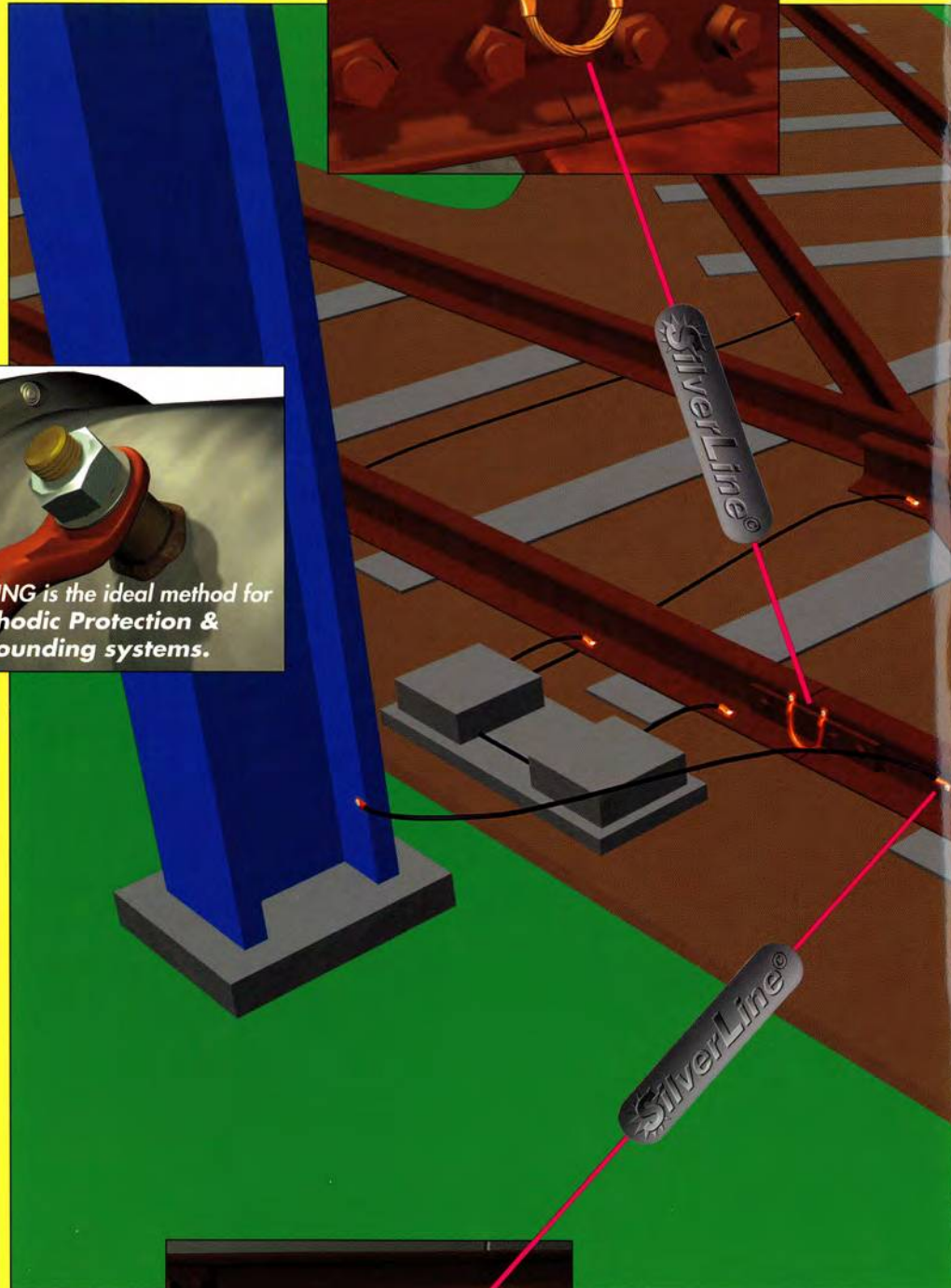
PinBrazing

The patented electronic pinbrazing system is a portable battery driven arc brazing method where the brazing material consists of a special brazing pin which is melted into the connectors lug and on the steel surface. The method is fast, safe and easy to install and can be used in any weather condition. A complete bond takes less than 2 minutes to install. PinBrazing is also part of the SAFE-TRACK® Silver Line©.



SafePlug®

Patented connection system for return traction, ground, and signalling. SafePlug® is the newest generation of connection plugs providing optimum performance and simple installation. The smart design doubles the contact pressure and contact surface to the rail. The Silver plated contact surfaces are polished during the installation and the surfaces are permanently remolded to perfect fit. SafePlug® is easy to install in a drilled hole in the web of the rail and tightened with a torque wrench or an impact wrench. Key components of the SafePlug® system are silver plated like all key components in the SAFE-TRACK® Silver Line©. In addition to our full range of rail bonds we offer a full range of installation tools and drilling machines.



SafeBond®

SafeBond® is a patented silver brazing system developed to meet the highest demands of the railways worldwide.

The method does not affect the rail metallurgical properties and can be attached anywhere on to the rail. The portable installation units are battery powered and designed for rapid signal bond installation. SafeBond®, another signal bond alternative in the SAFETRACK® Silver Line®.



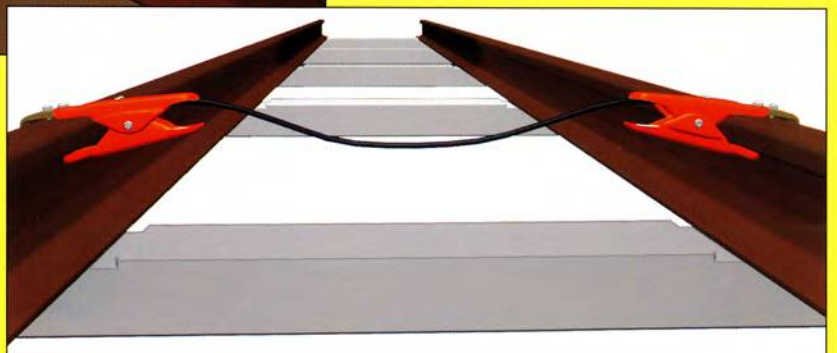
The SAFETRACK® application methods has Silver as an important part of the connection. Silver has the highest electrical conductivity of all the metals and is an extremely good protection against corrosion.



Temporary Connectors and TCODs

Safetrack's unique design for Temporary Connectors and Track Circuit Operating Device (TCOD) provides a quick, safe and simple method of blocking the line. Approved by Network Rail, Cert. No. PA 05/361.

Track Circuit Shunts



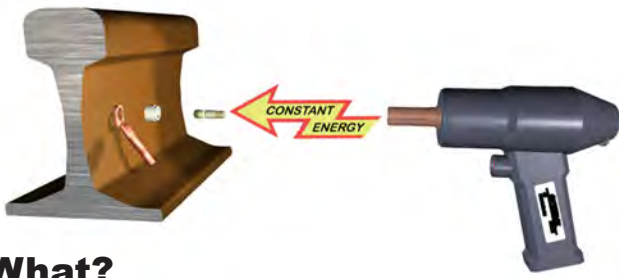


Index

SAFETRACK Bonding Technologies	2
PinBrazing	5
Consumables for PinBrazing	14
SafeCable™	23
SafeBond®	24
SafePlug®/ Drilling	28
Fixing clamps, clips	33
Temporary signal/shunting devices	34
Power Tools	36
Crimping & Cable Cutting Tools	38
Catenary Accessories.....	42
Signal Horn.....	43
Heating Products.....	44
Track Brooms	50
Work Tents	51
Lightings	52
Rail Lifting.....	54
Rail Trolleys	55



PinBrazing



What?

SAFETRACK®s PinBrazing method is a unique patented braze method to applicate electrical connectors to steel constructions.

How?

A special brazing pin with a silver solder (melting temperature **650°C/1200°F**) is melt down in the cable lugs hole and creates a brazed **Silver Connection®** between the cable wires itself and to the piece of steel.

Why?

To solve the problem with...

...**mechanical methods** where you have higher and higher transition resistance caused by temperature changes during a year.

...**propan gas brazing methods** that takes very long time and **gives a weak bond** because of the copper becomes brittle.

...**welding methods** where you melt the rail together with the copper-cable during very high temperature.

...or only just to achieve a **Silver Connection®** with an extremely low transition resistance during the whole life time.

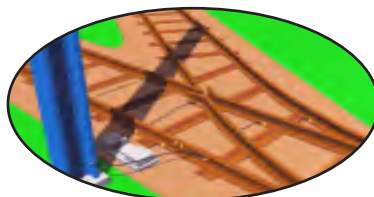
The **SAFETRACK®** PinBrazing method is not only one of the safest methods both for the operator and the work piece, but also the most economical application method because of the fast installation time and that the work groups can work in any weather. Very short learning time. Automated system.

When?

Whenever a signal bond, ground connector or power bond has to be made. Works in rain, snow, cold or heat.

Where?

In all angles. On the web-foot-head of the rail. On oil pipelines during full pressure. On vessels. On all type of steel constructions even very thinn material 1-2 mm. Battery driven. No need for external power source.



PinBrazing Unit



Digitalt pinnlödningsaggregat
Digitized pinbrazing unit
patent

The new lightweight and digitized pinbrazing unit **ECONECT** reaches a whole new level of performance. Despite same (and even higher) brazing capacity than previous units has the weight been reduced with 60%, which not only makes it ideal for maintenance work, but it can replace much larger units for larger works.

ECONECT is powered by a revolutionary new nano-battery with longer life than previous batteries. The weight is only 9,8kg (21,6Lb).
Used with brazing pins without fuse wires.

*Det nya, lätta och digitala pinnlödningsaggregatet **ECONECT** uppnår en helt ny prestationsnivå. Trots bibehållen (och till och med högre) lödkapacitet än tidigare aggregat så har vikten kunnat minskas med 60%, vilket inte bara gör det perfekt för underhållsarbete utan det kan ersätta betydligt större aggregat för större arbeten.*

ECONECT** drivs av ett nytt revolutionerande nano-batteri med längre livslängd än tidigare batterier. Vikten är endast 9,8kg. **Lodpinnar utan tidtråd användes.

9,8 kg!



S15 Gun automatic
SAFE 91015

Patent



Tool case with included accessories
SAFE 9524



Ground with super magnet
ø32mm, SAFE 80730



Accessory:
Ground Grip
SAFE 8071

ECONECT SAFE 94350 is delivered with:

Braze pistol S15 Automatic	SAFE 91015
Pinholder 8-9,5mm	SAFE 9211
Ringholder 8-9,5mm	SAFE 9202
Battery 1 pcs required	SAFE 80982
Grinding machine	SAFE 8007
Switchable ground magnet	SAFE 80730
Tool case	SAFE 9524
Shoulder strap	SAFE 9523

Add battery charger(not included):

Stationary charger 230V	SAFE 8048
Stationary charger 115V	SAFE 80481

Accessories

Ground Grip	SAFE 8071
Grinding wheel, silicon free	SAFE 8025
Carbide burr, type C	SAFE 8014
Carbide burr, type C extended	SAFE 8014XL
Pin holder 8-9,5 (A)	SAFE 9211
Pin holder M8 (B)	SAFE 9213
Pin holder M10 (C)	SAFE 9215
Pin holder M12 (D)	SAFE 9217
Ring holder 8-9,5 mm	SAFE 9202
Ring holder M8/M10/M12	SAFE 9204
Extension set for 8-9,5 mm	SAFE 9227
Extension set threaded pins	SAFE 9229

Technical Specification

Voltage	36 V DC
Number of brazes	50
Weight (incl.battery)	9,8kg/21,6Lb
Dimensions:	
Width	150 mm
Height	280 mm
Length	320 mm

PinBrazing Unit

S30X/C patent

Electronic pinbrazing unit
Elektronisches Stiftlöttaggregat
Elektroniskt pinnlödningsaggregat



Patent



S30 X/C is a small portable pinbrazing unit made specially for maintenance work on railways and also for cathodic protection installations. S30 X/C is electronically controlled, driven by 3 pcs of 12 V batteries which is easily exchangeable with a cassette system. S30 X/C can be fitted with a rail trolley, **Handy** SAFE 9361. **Braze pins without fuse wire are used.**

+S4 Automatic gun +Constant Energy
+Very fast method (2 secs brazing time) +Easy to use
+Separate battery boxes +High operator safety



S30 X/C ist ein kleines tragbares Stiftlötgerät für Wartungsarbeiten an Eisenbahnen sowie für Kathodenschutzinstallationen. S30 X/C wird elektronisch gesteuert. Wird mit 3 Stück 12 Volt-Batterien betrieben. Der Transportwagen **Handy**, SAFE 9361, ist ein Zubehör zum tragbaren Stiftlöttaggregat S30 X/C. **Es sind Lötstifte ohne Schmelzdraht zu verwenden.**

+S4 Automatische stiftlötpistole +Konstante Energie
+Kurze Lötzeit (2 Sekunden) +Einfache Handhabung
+Separat Batteriekassetten



S30 X/C är ett litet bärbart pinnlödningsaggregat gjort för underhållsarbeten för järnvägar samt för katodskyddsinstallationer. S30 X/C är elektroniskt styrt och drivs med 3 st slutna 12 Volts batterier som lätt byts ut med ett kassettsystem. Rälsvagn finns som tillbehör, **Handy** SAFE 9361. **Lodpinnar utan tidtråd användes.**

+S4 Automatisk pistol +Konstant Energi
+Kort lödtid (2 sek) +Lätt att använda
+Separata batteriboxar +Hög operatörssäkerhet

New Grounding tool.
No grinding required.
Saving time and brazing capacity.



Ground Grip
SAFE 8071



Extra battery box
Batteries not incl.



Handy 2, rail trolley, SAFE 9361
& Wheely kit, SAFE 9362



S4 Gun
automatic
SAFE 9102
Patent



Handy 2, rail trolley
SAFE 9361

SAFE 9307 is delivered with:

Braze pistol S4 Automatic	SAFE 9102
Battery case f.16Ah w.cables	SAFE 9320
Batteries 16AH 3pcs req.	SAFE 8093
Grinding machine	SAFE 8005
Switchable Ground Magnet	SAFE 80730
Accessory case	SAFE 9524
Shoulder strap	SAFE 9523

SAFE 9308 is delivered with:

Braze pistol S4 Automatic	SAFE 9102
Battery case f.13Ah w. cables	SAFE 9321
Batteries 13Ah 3pcs req.	SAFE 8092
Grinding machine	SAFE 8005
Switchable Ground Magnet	SAFE 80730
Tool case	SAFE 9524
Shoulder strap	SAFE 9523

Technical Specification

Voltage	36 V DC
Number of brazes	40-60
Weight (13Ah/16Ah)	22/25 kg
Dimensions:	
Width	230 mm
Height	390 mm
Length	280 mm

Accessories

Battery Charger 3A	SAFE 8052
Battery Charger 5A	SAFE 8049
Battery charger, f. car use	SAFE 8055
High power batteries 13 AH	SAFE 8092
High power batteries 16 AH	SAFE 8093
Ground Grip	SAFE 8071
Grinding wheel, silicon free	SAFE 8025
Carbide burr, type C	SAFE 8014
Carbide burr, type C extended	SAFE 8014XL
Handy 2, rail trolley	SAFE 9361
Separate battery box f.16Ah exl. batteries. With lid and handle.	SAFE 9320
Separate battery box f.13Ah exl. batteries. With lid and handle.	SAFE 9321
Battery adapter for charging of separate battery box	SAFE 9318
Pin holder 8-9,5 (A)	SAFE 9211
Pin holder M8 (B)	SAFE 9213
Pin holder M10 (C)	SAFE 9215
Pin holder M12 (D)	SAFE 9217
Ring holder 8-9,5	SAFE 9202
Ring holder M8/M10/M12	SAFE 9204
Extension set for S4 / 8-9,5	SAFE 9227
Extension set threaded pins	SAFE 9229

PinBrazing Unit



S101 Heavy Duty Patent

Electronic pinbrazing unit
Elektronisches Stiftlötaggregat
Elektroniskt pinnlödningsaggregat



S 101 Heavy Duty is a lightweight, easily transported pinbrazing unit adapted for brazing electrical contacts to railway lines. S 101 is delivered with a patented pistol - S4. S 101 has both rubber transport wheels and insulated rail guide wheels. The transport wheels in the up position easily pass over switch points and frogs, whilst in the down (parking) position the wheels act as a stabilisor. S 101 is powered by 3 pcs maintenance free, sealed, High power batteries in a cassette. Exchange cassettes can be fitted to increase capacity, these can also be charged separately.
S 101 uses brazing pins without fuse wires.

+S4 Automatic gun +Constant Energy
+Very fast method (2 secs brazing time) +Easy to use
+Separate battery cassettes +High operator safety



switch points is easily passed when the transport wheels are up



S101 Heavy Duty ist ein bequem tragbares Bogenlöttaggregat, angepaßt an das Festlöten von elektrischen Anschlüssen an Eisenbahnschienen. S101 wird zusammen mit der patentierten Lötpestole S4 geliefert und ist mit gummirollen und isolierten Schienenrollen versehen. Die Gummiräder werden beim Überfahren von Weichen hochgeklappt und bei Stillstand auf den Schienen heruntergeklappt. S101 wird mit drei wartungsfreien Batterien betrieben, die in einer abnehmbaren Kassette untergebracht sind und separat geladen werden können. Für erweiterte Lötkapazität sind zusätzliche Batteriekassetten als Zubehör erhältlich. **Zur Verwendung kommen Lötstifte ohne Zeitdraht.**

+S4 Automatische stiftlötpestole +Konstante Energie
+Kurze Lötzeit (2 Sekunden) +Einfache Handhabung
+Separat Batteriekassetten



S101 Heavy Duty är ett lätttransporterat pinnlödningsaggregat anpassat för fastlödning av elektriska förbindningar till järnvägsräll. S101 levereras med den patenterade pestolen S4 och aggregatet är utrustat med uppfällbara gummihjul samt isolerade rällshjul. Gummihjulen fälls upp vid passage av växlar och fälls ner vid "parkering" på rälsen. S101 drivs med tre underhållsfria batterier, placerade i avtagbar kassett som även kan laddas separat. För utökad lödkapacitet finns extra batteriekassetter som tillbehör. **Lodpinnar utan tidtråd användes.**

+S4 Automatisk pistol +Konstant Energi
+Kort lödtid (2 sek) +Lätt att använda
+Separata batteriekassetter +Hög operatörssäkerhet



S4
Automatic

Technical Specification

Voltage	36 V DC
Number of brazes	60-100
Weight	50 kg
Dimensions:	
Width	350 mm
Height	380 mm
Length	800 mm

SAFE 9060 is delivered with:

Braze pistol S4	SAFE 9102
Batteries 26 AH 3pcs	SAFE 8036
Battery cassette	SAFE 9067
Grinding machine	SAFE 8005
Earthing magnet	SAFE 8089

Accessories

Battery charger, stationary	SAFE 8049
Extra battery cassette	SAFE 9067
Charging adapter	SAFE 9068
Grinding wheel, silicon free	SAFE 8025
Pin holder 8-9,5 (A)	SAFE 9211
Pin holder M8 (B)	SAFE 9213
Pin holder M10 (C)	SAFE 9215
Pin holder M12 (D)	SAFE 9217
Ring holder 8-9,5	SAFE 9202
Ring holder M8/M10/M12	SAFE 9204

PinBrazing Unit

S300

Electronic Pinbrazing Equipment with S5 Automatic brazing gun, for use together with welding machines

Elektroniskt Pinnlödningsaggregat med S5 Automatisk lödpistol för användning med svetsomformare

SAFE 93807



For use when large numbers of brazings is needed and when battery operation not is necessary.
Delivered with: S5 Automatic brazing gun, electronic unit, grounding device and 3m plus/minus cables.

The equipment is designed for use with welding machines with an open circuit voltage of max. appr. 80V and welding current of at least 300A.

Advantages compare to fuse wired systems:

- Automatic brazing gun, S5 - No adjustment needed.
- Use of brazing pins without fuse wire.
- No "waste" of brazing pins.
- Low maintenance required.



*När ett stort antal lödningar skall göras och batteridrift ej är nödvändigt.
Levereras med: S5 Automatisk pistol, elektronikenhet, jordmagnet samt 3m plus/minuskablar.*

Utrustningen är anpassad för svetsomformare med max ca 80V i tomgångsspänning och som kan leverera svetsström på minst 300A.

Fördelar jämfört med tidtrådsbaserade system:

- Automatisk lödpistol, S5 - Ingen inställning.
- Lodpinnar utan tidtråd.
- Inget "lodpinnspill".
- Lågt underhållsbehov.



SAFE 93807 includes:

S300 PinBrazing unit	SAFE 93901
S5 Brazing gun,	SAFE 9104
ground magnet	SAFE 8089
3m welding cables.	

Accessories / Tillbehör

Cordless grinder incl.by/charger / Sladdlös slipmaskin m. bat./ladd., SAFE 591405.
Grounding Grip / Jordtång, SAFE 8071
Brazing Gun S5 / Lödpistol S5, SAFE 9104



PinBrazing Unit



X-250 Patent

PinBrazing and SAFE BOND® Unit
For Switch Panel Manufacturer
and large construction sites



PinBrazing & SAFE BOND®

Battery driven unit for larger production of PinBrazing and SAFE BOND® connections. Allows to do up to 400 PinBrazings in one charge or 200 SAFE BOND®s. When connecting the built-in and included digital 15A/230VAC charger one can make bondings continuously.

The new digital electronic in X-250 allows to SAFE BOND® as large as 70mm² copper cables.

The batteries, 3x42Ah, are sealed and maintenance free. Weight: X-250: 74,5 kg (164 lb).



Holders for Gun and Grinder



Heavy Duty Ground Magnet
6m(20ft) cable included



3x42Ah Batteries in series



S6 PinBrazing Gun



SB6 SAFE BOND® Gun



Grinder with Heavy Duty
Connector and 7m (23ft) cable

Included in SAFE 94600:

X-250 PB & SB unit	SAFE 9106
S6 Heavy Duty PinBrazing gun	SAFE 80472
Built-in 15A Digital charger 230VAC	SAFE 8095
42Ah Batteries (3pcs)	SAFE 8006
Grinder 36V Extra long cable 7m(23ft)	SAFE 80892
Heavy Duty Ground magnet 6m(20ft) cord	SAFE 94624
Tool Case	SAFE 8043
Eye protectors, clear	SAFE 8044
Eye protectors, green	

Optional:

SB5 SAFE BOND®2 gun	SAFE SB390111
6m(20ft) Heavy Duty cord included.	



Heavy Duty
Connectors

PinBrazing Guns

S4 SAFE 9102

Automatic Pinbrazing gun

Automatisk pinnlödningspistol



Advantages of the self adjusting gun:

- Elimination of operator error
- Consistent braze quality
- Half the weight
- Quicker and more simple operator training

Fördelar med automatiskt inställd pistol:

- Eliminering av operatörsfel
- Högre lödkvalitet
- Halva vikten
- Snabbare och enklare upplärning

Technical Specification:

- Automatic Adjustment of Height
- Weight 1,1 Kg
- Quick couplings for cables

Teknisk specifikation:

- Automatisk höjdinställning
- Vikt 1,1 Kg
- Lösa kabelpaket för lätt kabelförlängning etc.

Förlängningsset till S4 / Extension set for S4

It is possible to extend the pin and ringholder with a extension set where there is little space. L=150 mm.

Pinnlödning vid trånga utrymmen görs möjligt genom att förlänga pinn- och ringhållare med ett förlängningsset. L=150 mm.



Kpl. set för / Cpl. set for:

8-9,5 mm	SAFE 9227
M8	SAFE 9228
M10	SAFE 9229
M12	SAFE 9231

Vinkelpistol / Angle Gun SAFE 91035



The angle gun makes it possible to pinbrazing on the web between two close rails in for example a switch.

The height is adjustable between 95-115 mm from the head of the rail.

Vinkelpistolen gör det möjligt att pinnlöda i livet på rälen även i en trång växel. Höjden kan ställas in mellan 95-115 mm från räls huvudets överkant.

/Delivered with / Levereras med:

Pin holder 8-9,5mm / Pinnhållare (A)
Ring holder / Ringhållare 8-9,5mm

SAFE 9211
SAFE 9206

Slipmaskin / Grinder

Safe Nr Safe no.	Spänning Voltage	Effekt Power	Vartal Rpm	Vikt weight	Anm. Note
8005	42 V	280 W	23.000	1,5 kg	Powered by Pinbrazing unit
591405	18 V	---	21.500	3 kg	Cordless



SAFE 8005



SAFE 591405

Track Pack 90

SAFE 5914TP90

1 pc Grinder	Safe 591405
1 pc Spare battery	Safe 591409
2 pcs Carbide burr	Safe 8014 (C)
5 pcs Grinding pin	Safe 8025

Track Pack™

Use our pre-selected kits, **Track Pack™**, for appropriate configurations for Rail service. Spar tid. Använd våra förvalda kit, **Track Pack™**, lämpliga för Järnvägsindustrin.

Obs!

Pinnlödningsmetoden kräver speciella sliptrissor eller karbidfilor för att åstadkomma en lödbar yta, andra typer av sliptrissor ger inte en godkänd lödyta.

Note!

The pinbrazing methods require a special grind stone or carbide burr to prepare a brazeable surface, other types of grind stones will not give a sufficient braze surface.

Karbidfilor / Carbide burr

För extra avverkningskapacitet
For extra grinding capacity

New!

Mini Cutting disc, (63x0,8x9,5mm) For cutting off rail over flow
Mini kapskivor för att skära bort rälsövervalsning i isolerskarvar.
SAFE 80202 (Spindle shaft SAFE 80201)



Safe Nr Safe No.	Typ Type	Ø Huvud (mm) Diameter of head	Huvudlängd (mm) Head length (mm)	Ø skaft (mm) Dia. of shaft (mm)
8012	A	13	25	6
8013	B	13	19	6
8014	C	13	25	6
8015	D	13	19	6
8016	E	13	30	6
8017	F	16	14	6

Type C is available with an extended shaft, L=150mm, SAFE 8014XL.



! Använd alltid skyddsglasögon vid slipning.

!Use always eye protectors when grinding!

Viktigt!

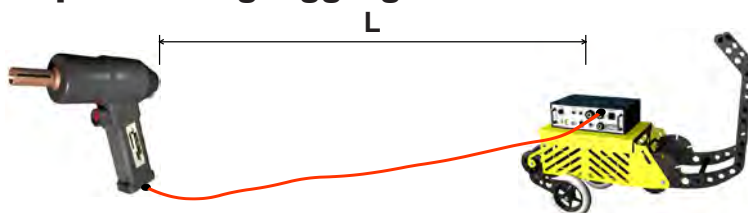
Om det finns spår efter kemiska preparat såsom olja fett el. dyl. på metallytan som skall lödas rekommenderas att man slipar med en ren sliptrissa före lödning alt. använder en karbidfil som av erfarenhet är något mindre känslig.

Important!

If there is trace of chemical preparation like oil, grease etc. on the braze surface we recommend to grind a second time with a clean grind stone or using a carbide burr which is experienced to be less sensitive.

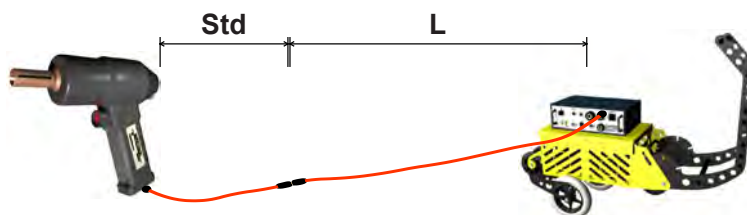
PinBrazing Accessories

Cables for pin brazing units Kabelsatser till pinnlödningsaggregat



SAFE nr. SAFE No.	(L)ängd (L)ength	Benämning Description
SAFE 9230	2,7 m	Kabelpaket till pistol, standard Cables for pistol, standard
SAFE 9236	4,5 m	Kabelpaket till pistol Cables for pistol
SAFE 8067	2,7 m	Jorddon, standard Earthing magnet cable, standard
SAFE 8068	4,5 m	Jorddon Earthing magnet cable

Extension cables Kabelförlängningar



SAFE nr. SAFE No.	(L)ängd (L)ength	Benämning Description
SAFE 9235	5 m	Förlängningskabel till pistol Extension cable for pistol
SAFE 9237	5 m	Förlängningskabel till jorddon Extension cable for earthing magnet
SAFE 9338	5 m	Förlängningskabel till slipmaskin, för S30, S101 Extension cable for grinding machine, S30, S101

Automatic Battery tester, Digital Automatisk Batteritestare, Digital SAFE 8040

10 second load test

·Unit indicates "CHG" if the pre-test state of charge is not sufficient for proper battery testing.

10 sekunders belastningstest

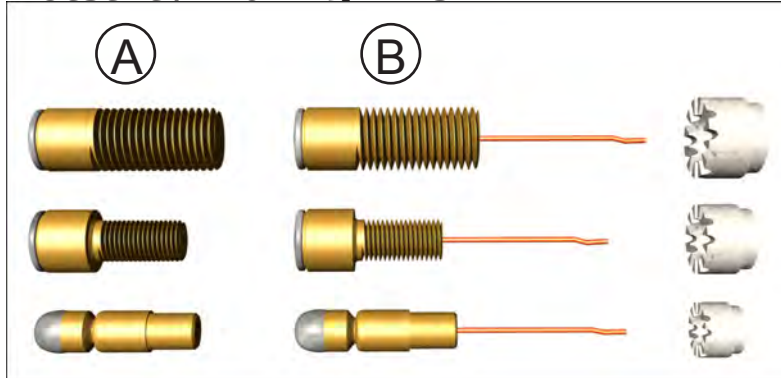
Indikerar om ej tillräcklig spänning finns för utförande av test.



PinBrazing Consumables



Lodpinnar / Lötstift / Brazing Pins



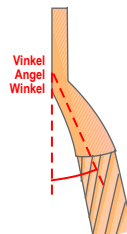
SAFE No. Use these for railway use	SAFE No. Use these within cathodic protection systems	BV. nr	Benämning Beschreibung Description	Dimension L, Thread length (mm)	Antal/Förp. Anzahl/Verpack. Qty/pack.	Rek. skyddsring Rek. Schuttsringe Rec ferrule	Anmärkning Notes
A För elektronisk pinnlödning / Für elektronische lötgerät / For electronic pinbrazing unit							
SAFE 10011	SAFE 10051	0624690	Std. för 25 mm ²	Ø 8 mm	100	SAFE 2003	
SAFE 10101	SAFE 10301	0624691	Extra för 50 mm ²	Ø 8 mm	100	SAFE 2003	
SAFE 10131	SAFE 10191	-	Standard	Ø 9,5 mm	100	SAFE 2009	
SAFE 10641	SAFE 10381	-	Gängad Gewindestifte Thread	M8 L=16	50	SAFE 2012	100 st brickor, 50 st låsmutter 100 st Unterlegscheib, 50 st muttern 100 pcs washer, 50 pcs locknuts
SAFE 10741	SAFE 10401	-	Gängad Gewindestifte Thread	M10 L=24	50	SAFE 2012	50 st brickor, 100st låsmutter 50 st Unterlegscheib, 100st muttern 50 pcs washer, 100pcs locknuts
SAFE 10561	SAFE 10421	-	Gängad Gewindestifte Thread	M12 L=24	50	SAFE 2012	50 st brickor, 100 st låsmutter 50 st Unterlegscheib, 100 st muttern 50 pcs washer, 100 pcs locknuts
B							
SAFE 1001	SAFE 1005	0624670	Std. för 25 mm ²	Ø 8 mm	100	SAFE 2003	
SAFE 1025	SAFE 1025	-	8mm Direkt	Ø 8 mm	100	SAFE 2003	
SAFE 1010	SAFE 1030	0624671	Extra för 50 mm ²	Ø 8 mm	100	SAFE 2003	
SAFE 1013	SAFE 1019	-	Standard	Ø 9,5 mm	100	SAFE 2009	
SAFE 1064	SAFE 1038	-	Gängad Gewindestifte Thread	M8 L=16	50	SAFE 2012	100 st brickor, 50 st låsmutter 100 st Unterlegscheib, 50 st muttern 100 pcs washer, 50 pcs locknuts
SAFE 1074	SAFE 1040	-	Gängad Gewindestifte Thread	M10 L=24	50	SAFE 2012	50 st brickor, 100 st låsmutter 50 st Unterlegscheib, 100 st muttern 50 pcs washer, 100 pcs locknuts
SAFE 1056	SAFE 1042	-	Gängad Gewindestifte Thread	M12 L=24	50	SAFE 2012	50 st brickor, 100 st låsmutter 50 st Unterlegscheib, 100 st muttern 50 pcs washer, 100 pcs locknuts

Skyddsringar / Schutzringe / Ferrules

SAFE nr. SAFE No.	BV. nr	Benämning Beschreibung Description	Dimension	Antal/Förp. Anzahl/Verpack.	Anmärkning Notes
SAFE 2003	0624680	Skyddsring Schutzringe Ferrule	Ø 8 mm	-	
SAFE 2009	-	Skyddsring Schutzringe Ferrule	Ø 9,5 mm	-	
SAFE 2012	-	Skyddsring Schutzringe Ferrule	Ø 12 mm	-	

PinBrazing Consumables

RailBonds, Copper



Sq.mm ²	Length, mm(Inch)	SAFE No.	BV nr.	Angle	Qty/pack	Rec. Brazing pin	Notes
10	100	SAFE 3403	-	10°	100	SAFE 10011	PVC
10	200	SAFE 3402	-	10°	100	SAFE 10011	PVC
10	400	SAFE 3401	-	10°	100	SAFE 10011	PVC
16	300	SAFE 3405	-	10°	100	SAFE 10011	XLPE/PVC
16	450	SAFE 3407	-	10°	50	SAFE 10011	XLPE/PVC
16	500	SAFE 3406	-	10°	50	SAFE 10011	XLPE/PVC
3/16 in.	180	SAFE 3278	-	40°	100	SAFE 10011	phosphor bronze
3/16 in.	300	SAFE 3274	-	10°	100	SAFE 10011	phosphor bronze
25	145	SAFE 3059	-	10°	100	SAFE 10011	
25	145	SAFE 3069	624660	40°	100	SAFE 10011	
25	200	SAFE 3049	624662	40°	100	SAFE 10011	
25	200	SAFE 3050	-	10°	50	SAFE 10011	
25	350	SAFE 3270	-	40°	25	SAFE 10011	
25	400	SAFE 3078	625515	10°	20	SAFE 10011	PVC
25	410/(16")	SAFE 3275	-	40°	25	SAFE 10011	
25	610/(24")	SAFE 3276	-	40°	25	SAFE 10011	
25	865/(34")	SAFE 3280	-	40°	25	SAFE 10011	
25	915/(36")	SAFE 3277	-	40°	25	SAFE 10011	
25	935	SAFE 3271	-	40°	25	SAFE 10011	
25	1170/(46")	SAFE 3281	-	40°	25	SAFE 10011	
25	1360	SAFE 3252	-	10°	25	SAFE 10101	PVC
25	1500	SAFE 3068	-	10°	25	SAFE 10011	
50	185	SAFE 3081	-	60°	50	SAFE 10131	
50	185	SAFE 3077	-	10°	50	SAFE 10101	
50	185	SAFE 3088	-	60°	50	SAFE 10101	
50	300	SAFE 3092	-	60°	25	SAFE 10131	
50	300	SAFE 3080	-	10°	25	SAFE 10101	
50	400	SAFE 3098	-	10°	25	SAFE 10131	
50	400	SAFE 3079	-	10°	25	SAFE 10101	
50	400	SAFE 3087	-	40°	25	SAFE 10101	
50	900	SAFE 3090	-	60°	25	SAFE 10131	
50	950	SAFE 3099	-	10°	25	SAFE 10101	
50	1000	SAFE 3093	-	60°	25	SAFE 10131	

The SAFETRACK railbonds are made of a highly flexible cable to withstand vibrations in the rail. The cable lugs are made for pinbrazing in both ends. The unique design of the cable lugs ensure that it is the wires in the cable that is brazed to the rail. This design gives a extremely low transition resistance. The railbonds can be made in almost any lenght and sizes.

Theft Deterrent Signal RailBonds - made of Steel



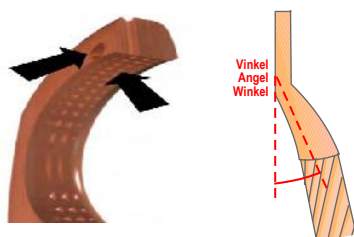
Theft of copper cables is today a major problem for railways worldwide.

Therefore are many railways using **SAFETRACKS Theft Deterrent steel railbonds** for their signal bond installations.

The unique steel railbonds are highly flexible and made of soft annealed wires to withstand vibrations in the rail. The cable lugs are made for pinbrazing in both ends.

The **unique design** of the cable lugs ensure that it is the wires in the cable that is brazed to the rail. This design gives the lowest possible transition resistance.

The railbonds can be made in different lengths and sizes.



GALVANIZED STEEL

Sq,mm ²	Length, mm	SAFE No.	Angle	Qty/pack	Rec. Brazing pin	Notes
25	145	3070	40°	100	SAFE 10011	
25	145	3172	40°	100	SAFE 10011	PVC
25	300	3169	40°	50	SAFE 10011	
25	500	3170	40°	25	SAFE 10011	
25	1450	3246	40°	10	SAFE 10011	PVC
25	1500	3176	10°	10	SAFE 10011	
25	1500	3175	10°	10	SAFE 10011	PVC
25	2000	3173	40°	10	SAFE 10011	
25	3200	3248	40°	10	SAFE 10011	PVC
50 (2x25)	185	3103	60°	50	SAFE 10131	
50 (2x25)	1500	3104	60°	25	SAFE 10131	PVC
70 (2x35)	350	3193	60°	25	SAFE 10131	

PinBrazing Consumables Insulated copper cable



Extension bonds



Area (mm ²)	L (mm)	SAFE nr.	ID / OD	Rec.brazing pin
150	430 L	SAFE 3014	19/25	2xSAFE 10131
150	430 R	SAFE 3015	19/25	2xSAFE 10131
150	315	SAFE 3110	19/25	2xSAFE 10131



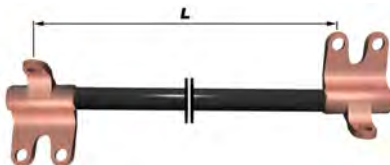
Area (mm ²)	L (mm)	SAFE nr.	ID / OD	Rec.brazing pin
150	430 L	SAFE 3220	19/25	3xSAFE 10131
150	430 R	SAFE 3221	19/25	3xSAFE 10131
150	500 L	SAFE 3113	no sleeve	3xSAFE 10131
150	500 R	SAFE 3114	no sleeve	3xSAFE 10131
150	1000 L	SAFE 3116	no sleeve	3xSAFE 10131
150	1000 R	SAFE 3115	no sleeve	3xSAFE 10131
150	1700 L	SAFE 3218	no sleeve	3xSAFE 10131
150	1700 R	SAFE 3217	no sleeve	3xSAFE 10131
150	2700 L	SAFE 3216	no sleeve	3xSAFE 10131
150	2700 R	SAFE 3215	no sleeve	3xSAFE 10131
185	500 L	SAFE 3314	21/27	3xSAFE 10131
185	500 R	SAFE 3315	21/27	3xSAFE 10131

Rail bonds



SAFE No.	Area (mm ²)	L(mm)	Material	Qty/pack.	Rec. Braze pin
SAFE 3031	150	980	Koppar, Cu	5	4x SAFE 10131
SAFE 3032	150	1220	Koppar, Cu	5	4x SAFE 10131
SAFE 3042	150	780	Koppar, Cu	5	4x SAFE 10131
SAFE 3086	150	1100	Koppar, Cu	5	4x SAFE 10131
SAFE 3108	150	1500	Koppar, Cu	5	4x SAFE 10131
SAFE 3109	150	500	Koppar, Cu	5	4x SAFE 10131
SAFE 3200	150	600	Koppar, Cu	5	4x SAFE 10131
SAFE 3201	150	1300	Koppar, Cu	5	4x SAFE 10131
SAFE 3202	150	3400	Koppar, Cu	5	4x SAFE 10131

Impedance bond

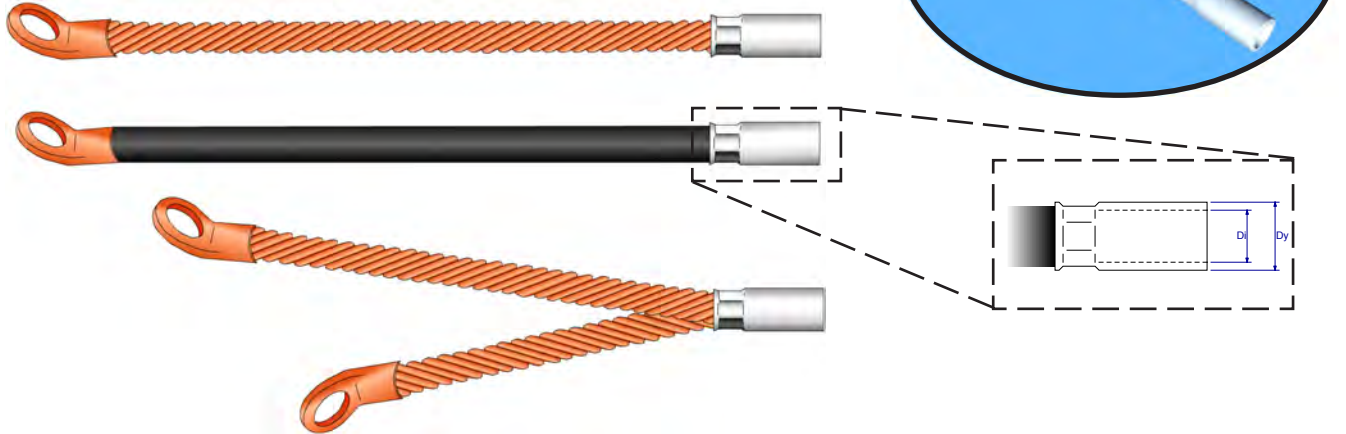


SAFE No.	Area (mm ²)	Length (mm)	Material	Rec. Braze pin
33210	185	12,5	PVC	6 x 10131

PinBrazing Consumables



Förlängningsledningar, Koppar Extension bonds, Cu



Area (mm ²)	Längd (mm) Length (mm)	SAFE nr. SAFE No.	BV nr.	D inner / D outer	Vinkel Angle	Remark	Antal/förp. Qty/pack.	Rek. Lodpinne Rec. Braze pin	För pressning till: For cable size:
3/16 in.	120	SAFE 3273	-	5,5 / 8,5	10°	phosphor bronz	100	SAFE 10011	3/16 in.
25	330	SAFE 3010	0420205	6,5 / 12	10°		50	SAFE 10011	Ø6/16mm ²
25	800	SAFE 3011	-	6,5 / 12	10°		50	SAFE 10011	Ø6/16mm ²
25	330	SAFE 3056	0420204	8 / 11	10°		50	SAFE 10011	25mm ²
2x16	95	SAFE 3040	-	7 / 12	40°		50	2 x SAFE 10011	Ø6/16mm ²
35	150	SAFE 3029	-	9 / 13	10°		50	SAFE 10101	35mm ²
35	300	SAFE 3019	-	9 / 13	60°		50	SAFE 10131	35mm ²
50	310	SAFE 3013	0420206	8,5 / 12	10°		50	SAFE 10101	Ø8mm
50	200	SAFE 3007	-	11 / 14,5	60°		50	SAFE 10131	50mm ²
50	300	SAFE 3008	0420207	11 / 14,5	10°		50	SAFE 10101	50mm ²
2x25	72	SAFE 3053	-	8,5/12	40°		50	2 x SAFE 10011	25-35mm ²
2x25	72	SAFE 3051	-	11/14,5	40°		50	2 x SAFE 10011	50mm ²
2x25	165/115	SAFE 3041	-	11 / 14,5	40°		50	2 x SAFE 10011	50mm ²
50	240	SAFE 3004	-	8,5 / 11	10°		50	SAFE 10131	Ø8mm
50	150	SAFE 3006	-	11 / 14	60°		50	SAFE 10101	50mm ²
50	200	SAFE 3007	-	11 / 14	60°		50	SAFE 10131	50mm ²
50	350	SAFE 3009	-	11 / 14	10°	PVC	25	2 x SAFE 10011	50mm ²
2x35	170/120	SAFE 3048	-	13 / 17	10°		50	2 x SAFE 10101	70mm ²
2x35	400/340	SAFE 3047	0420208	13 / 17	10°		25	2 x SAFE 10101	70mm ²
70	300	SAFE 30483		13 / 17	10°		25	1 x 10131	70mm ²
95	400	SAFE 3198	-	15 / 20	60°	PVC	-	2 x SAFE 10131	95mm ²

Förlängningsledningar används till pressning i ena ändan på befintlig kabel och pinnlödning i andra ändan. Kabeln är av flexibel typ.

The cable is very flexible, on one end the cable is fixed by pin brazing, on the other end by pressing.

PinBrazing Consumables

Octopus Bonds

For installation of larger cables to the rail web



To ensure a long lasting connection to the rail one need as flexible cables next to the rail as possible. For this one can use Safetracks multistranded copper cable bonds to be crimped to a larger cable with a crimping tool. Length from end of splicing sleeve to centre of hole:

Size of cable to connect with:	SAFE No.	Length of shortest cable	No. of cable ends	Use with Brazing Pin:	No. Of brazing pins
50 mm ²	3041	100 mm	2	10011	2
70 mm ²	3048	120 mm	2	10101	2
70 mm ²	3047	340 mm	2	10101	2
95 mm ²	3128	220 mm	2	10101	2
150 mm ²	3130	220 mm	3	10101	3
150 mm ²	3140	220 mm	2	10131	2
185 mm ²	33161	220 mm	3	10131	3
240 mm ²	3132	230 mm	5	10101	5



Rail Bonds

Cable size	SAFE No.	Length mm / Inch	Use with Brazing Pin	No. Of Brazing Pins
120 mm ²	32073	330mm / 13"	10131	4
150 mm ²	3225-02	330mm / 13"	10131	4
150 mm ²	3228-02	1200mm / 47"	10131	4

Extension Bonds



Cable size	SAFE No.	Length mm/Inch	Use with Brazing Pin	No. Of Brazing Pins	Insulation mtr.
95mm ²	31281	200mm / 8"	10131	2	PVC
95mm ²	31282	200mm / 8"	10131	2	Bare Copper
120mm ²	31291	200mm / 8"	10131	2	PVC
120mm ²	31292	200mm / 8"	10131	2	Bare Copper
150mm ² / 300MCM	30161	200mm / 8"	10131	2	PVC
150mm ² / 300MCM	30162	200mm / 8"	10131	2	Bare Copper

Hole Punch Tool

The hole punch tool is used to reclaim faulty or used bonds.

Hålslagningsverktyg används till att slå nytt hål i förbindningar som man mejslat bort.

SAFE nr. SAFE No.	Benämning Description	För lodpinne For braze pin	Vikt Weight
SAFE 8001	Hålslag Ø 8 mm Hole size Ø 8 mm	Ø 8 mm	1,3 Kg
SAFE 8002	Hålslag Ø 9,5 mm Hole size Ø 9,5 mm	Ø 9,5 mm	1,4 Kg



Skenförbindningar / Fish - plate bonds



Typ A. För monterade skarvjärn. Type A. For in-situ fish-plates

SAFE nr. SAFE No.	BV nr.	Area (mm ²)	Längd (mm) Length (mm)	Antal/förp. Qty/pack.	Rek. lodpinne Rec. braze pin
SAFE 3023	0624442	25	1100 (4-håls skarv) 1100 (4-hole plate)	10	6st SAFE 10011 6pcs SAFE 10011
SAFE 3024	0624447	25	1400 (6-håls skarv) 1400 (6-hole plate)	10	6st SAFE 10011 6pcs SAFE 10011

Typ B. För omonterade skarvjärn. Type B. For unmounted fish-plates.

SAFE nr. SAFE No.	BV nr.	Area (mm ²)	Längd (mm) Length (mm)	Antal/förp. Qty/pack.	Rek. lodpinne Rec. braze pin
SAFE 3021	0624441	25	1100 (4-håls skarv) 1100 (4-hole plate)	10	4st SAFE 10011 4pcs SAFE 10011
SAFE 3022	0624446	25	1400 (6-håls skarv) 1400 (6-hole plate)	10	4st SAFE 10011 4pcs SAFE 10011



Y-Bonds / Y-Förbindning



Area (mm ²)	Length (mm) Längd (mm)	Safe no Safe nr	BV nr	Material	Antal/förp. Qty/pack.	Screwset* Skrivsats*	Rek. lodpinne Rec. braze pin
2x25	77	SAFE 3043	0624665	Copper, Cu	50	x	2x 10011
2x20	77	SAFE 3046	-	Galv. Steel	50		2x 10011
2x25	87	SAFE 3044	-	Copper, Cu	50	x	2x 10011
2x25	87	SAFE 3045	-	Copper, Cu	50		2x 10011
2x25	190	SAFE 3054	-	Copper, Cu	50	x	2x 10011

Cable lug for mounting 10mm² cable, SAFE 6052. 50pcs/pack.

Presskabelsko för montering av 10mm² kabel, SAFE 6052 / BV 0626531. 50st/förp.

*Screwset includes:

- 1pc M8x20 stainless bolt.
- 1pc M8 stainless locking nut.
- 2pcs 8,4x16x1,5 stainless washer.

*Skrivsats innehåller:

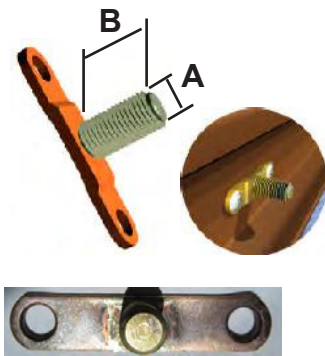
- 1st M8x20 syrafast sexkantsskruv.
- 1st M8 syrafast låsmutter.
- 2st 8,4x16x1,5 syrafasta brickor.

T-connectors / T-förbindningar

Type/Typ C

Type/Typ E

Type/Typ F



SAFE nr. SAFE No	Typ Type	A	B	Skrivmaterial Thread material	Antal/förp. Qty/pack.	Rek. lodpinne Rec. braze pin
SAFE 5005	C	M8	18	Mässing Brass	100	2st 10011
SAFE 5007	C	M12	35	Mässing Brass	100	2st 10011
SAFE 5032	E	M16	26	Rostfritt stål Stainless steel	50	2 st 10131
SAFE 5017	F	M16	26	Rostfritt stål Stainless steel	25	4 st 10131
SAFE 50221	F	M16	32	Rostfritt stål Stainless steel	50	4 st 10131

T-CONNECTORS are used when a disconnectable bond is needed. T-Connectors consist of a copper plate on which a thread is welded, each plate is retained by two or four braze pins and allows larger (up to 300 mm²) cable sizes to be used.

To braze the largest T-Connector, with 4 brazings, it takes not more than 1-2 min inclusive grinding for the earthing and brazing area.

T-förbindningen används då man vill ha en demonterbar anslutning. Den består av en platta i koppar samt en gängad anslutningsdel. Förbindningen pinnlöds sedan mot arbetsmaterialet. Den gängade anslutningsdelen är av antingen mässing eller rostfritt stål.

Lugs crimped to the cable / För pressning till kabel



SAFETRACK's cable lugs are specially made for PinBrazing. Use SAFETRACK's crimping tools to ensure adequate contact.

SAFETRACKs kabelskor är speciellt utformade så att pinnlödning är möjligt. För att få en fullgod kontakt rekommenderas användning av SAFETRACKs kontaktpressningsverktyg eller jämförbara modeller.

SAFE no.	Cable area	ID / OD	Qty/pack	Rec. Brazing pin
SAFE 6056	10 mm ²	6/9	100	SAFE 10011
SAFE 6057	16mm ² LIGHT	6,5/9	100	SAFE 10011
SAFE 6078	20 mm ²	7/10	100	SAFE 10011
SAFE 6080	25 mm ²	8/12	50	SAFE 10101
SAFE 6091	Ø8mm	8,5/12	50	SAFE 10101
SAFE 6081	35 mm ²	9/12	50	SAFE 10101
SAFE 6079	50 mm ²	11/14	50	SAFE 10101
SAFE 60847	70mm ²	(#2/0)	50	SAFE 10131
SAFE 60849	95 mm ²			SAFE 10131
SAFE 60683	110 mm ²			2 x SAFE 10131



For connecting smaller cable sizes use terminal sleeves and lugs as follow:

2,5 mm², use sleeve SAFE 6700 + lug SAFE 6056
 4,0 mm², use sleeve SAFE 6701 + lug SAFE 6056
 6,0 mm², use sleeve SAFE 6702 + lug SAFE 6056

Lugs pinbrazed to the cable / För pinnlödning till kabel



This cable lug is also PinBrazed to the cable and no crimping tool is needed. The cable is inserted in the lug which is flattened and the cable is then brazed to the lug by placing the brazing pin in the flattened hole.

Kabelsko som även pinnlödes fast till kabeln.

Kontaktpressningsverktyg behövs ej.

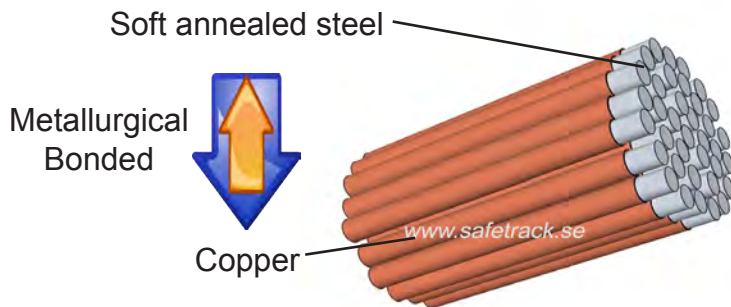
Kabeln sticks in i kabelskon, som tillplattas och därefter lödes fast till kabelskon.

SAFE no.	Cable size	Qty/pack	Rec. Brazing pin
SAFE 6062	25 mm ²	50	2x SAFE 10101
SAFE 6063	35 mm ²	50	2x SAFE 10101
SAFE 6064	50 mm ²	50	2x SAFE 10101
SAFE 6066	AWG #3-#6	50	2x SAFE 10101
SAFE 6060	AWG #3-#6 shaped for 5/8" rod	50	2x SAFE 10101

SAFE CABLE

The Theft Deterrent Cable
Den stöldförebyggande kabeln

No scrap value!



Theft of copper cables is today a serious problem for railways worldwide. This can now finally be prevented with SAFETRACKs new unique Theft Deterrent Copper-Steel Cable **SafeCable**.

The unique **SafeCable** is made of soft annealed steel wires, to make it as flexible as possible to withstand vibrations in the rail, The steel and copper are metallurgical bonded together. The copper on the outside ensure good contact when crimping sleeves with the cable. **The electrical conductivity is 55%** of the same size of a copper cable.

The cable is magnetic which means that thieves who checks with magnets for copper avoid stealing the cable but if they anyway try to cut it they find it hard to cut and a great disappointment waiting for them at the recycling companies.

The cable has no scrap value!

Railbonds for PinBrazing can be made in different lengths and models with this cable.

*Stöld av kopparkabel är idag ett stort problem för järnvägar och övriga branscher över hela världen. Nu finns äntligen lösningen med SAFETRACKs nya **SafeCable**.*

*Den unika SafeCabel-kabeln är gjord av mjukglödgad stålwire så den är så flexibel som möjligt, samt är molekyllärt sammanbunden med kopparhöljet runt varje tråd för att motstå vibrationer i rälen. Det yttre kopparhöljet säkerställer god kontakt vid kontaktpressning. Den elektriska **ledningsförmågan är hela cirka 55%** av motsvarande kopparkabel.*

Kabeln är magnetisk vilket gör att tjuvar som kontrollerar med magneter efter koppar undviker att stjäla kabeln försöker ändå tjuvarna att klippa den upptäcker de att den är mycket svårklippt och på återvinningsföretagen väntar ytterligare en besvikelse.

Den saknar skrotvärde!

Förbindningar för Pinnlödning kan göras i olika längder och modeller med denna kabel.



Technical specification	Teknisk specifikation	SAFE 35951	SAFE 35961	SAFE 35971
Area (mm ²)	Area (mm ²)	70 mm ² / 0,108 sq in	95 mm ² / 0,147 sq in	120 mm ² / 0,186 sq in
Equivalent copper cable	Motsvarar kopparkabel	41 mm ² / AWG 1	53 mm ² / AWG 1/0	65 mm ² / AWG 2/0
Diameter, cable (mm)	Diameter, kabel (mm)	10,8 mm / 0,425 in	12,6 mm / 0,496 in	14,4 mm / 0,566 in
Resistance, DC	Resistans, likström	0,42 Ωm/km, max	0,325 Ωm/km, max	0,270 Ωm/km, max
Weight	Vikt	0,58 kg/m 2,565 ft/lb	0,785 kg/m 1,896 ft/lb	1,03 kg/m 1,445 ft/lb
Number of strands	Ledarantal	61	61	

The SAFEBOND® METHOD

The safe method for electrical connections



Units

- Battery driven
- Light weight
- Easy to learn
- Safe for the operator



- The process
- Grind the brazing area
 - Place the work material into the gun
 - Pull the trigger
 - A few seconds later you're done!

Patented.

Safe for the rail

The only method today that can manage to applicate cables to even the hardest rail without any metallurgic affect on the rail.

The only Union Pacific(US) approved method for use on head hardened rail.

For use on the...

Head!

Web!

Base!

...anywhere!

Broken Rail Detection

The railbonds can be mounted anywhere on the rail

Low transition resistance

Thanks to that it's a **Silver bonding® Method...**

...only 5 microhms/brazed joint...

...the whole life time!

Not just the first years!

High mechanical strength

Low brazing temperature

Braze material melts at 650°C (1200°F)

Very quick method

The braze takes a few seconds.

Easy to use

Quick to learn

Safe for the operator

SafeBond Unit

SAFE BOND®2
X-51
 Patented



SAFE BOND® X-51 Brazing unit is a lightweight(25 kg), easily transported digital arc - brazing unit adapted for brazing electrical contacts to railway lines. The method does not affect the rail metallurgical.

Since the use of harder and harder rail is increasing the SAFE BOND® brazing method has been developed to meet the need for a safe and fast method to applicate electrical connections to the rails.

Due to the fact that hardening effects are created when the temperature of the rail is increasing 720°C/1328°F is the method based on that a special silver alloy(with a lower melting temperature), which is placed beneath the copper cable lug and melted by an electronically controlled energy amount powered by a 36 V DC battery unit.

It is delivered with an automated patented gun - SB5. SAFE BOND® could be equipped with a light weight trolley with insulated rail guide wheels. SAFE BOND® is powered by 3 pcs maintenance free, high power, batteries in a movable cassette. Exchange cassettes can be fitted to increase capacity, these can also be charged separately.



SAFE BOND®
 Allows rail bonds to be attached anywhere on the rail



SB5

Approved by the largest Railroads in North America

SafeBond Unit



SAFE BOND® Brazing unit, Pat. Pend.
Part no. SAFE SB390010



SAFE BOND®
Allows rail bonds to be attached anywhere on the rail

SAFE BOND® Brazing unit is a lightweight, easily transported arc - brazing unit adapted for brazing electrical contacts to railway lines where there is a need for lowest possible temperature to the rail. It is delivered with an automated patented gun - SB4. SAFE BOND® has adjustable rubber transport wheels and insulated rail guide wheels. The transport wheels in the up position easily pass over switch points and frogs, whilst in the down (parking) position the wheels act as a stabilisor. SAFE BOND® is powered by 3 pcs maintenance free, high power, batteries in a movable cassette. Exchange cassettes can be fitted to increase capacity, these can also be charged separately.



The system is today designed for the 3/16 phosphor bronze cable and is delivered in a cpl. kit with bond, braze electrode, protection ferrule and special braze flux.

Bonds can be delivered in the 3/16 (13,5 mm²) phosphor bronze cable in any length or as an extension cable.

The unit is delivered with:

- 1 pcs of braze unit.
- 1 pcs of SB4 Braze gun.
- 3 pcs of special high power batteries.
- 1 pcs of exchangeable battery cassette.
- 1 pcs of ground magnet.
- 2 pcs of tool boxes.

Special designed grinding machine and battery charger has to be seperately ordered to operate the system.



**Acid proof stainless steel +
High strength bolt**

New Swedish steel A4 + 10.9 Classification!

- Connect cables with 120Nm (M12), 70Nm (M10)
- Designed for large temperature differences in rail
- Better contact: Rail to Cable lugs

**Extra cone shaped
copper bushing**

- Double contact surface
- Silver plated
- Sealing from moisture
- Self locking of bolt
- Maintain contact pressure to rail

**Chamfered
bushing**

- Designed so water cannot stay around the bushing and cause corrosion

**Polished
contact surface**

- Automatically when mounting the bushing, the surface is polished for best contact

No hydraulic tools

- Use the same impact wrench to expand the copper bushing in the rail as you connect the cables with!
No extra tool to carry with you.



**>27 000 Amp during 1 sec.
2 Million cycles fatigue test**

Designed & tested to conform to the highest demands in the rail industry

**Connection System for: Return Traction,
Ground and Signalling Devices**



SAFEPLUG® Twin is doublesided for connecting cables on both sides of the rail.



SAFEPLUG® is a singleside connection plug.

SAFEPLUG® is the new generation of connection plug with an optimum performance. **SAFEPLUG®** is included in the **SAFETRACK® Silver Bond®** Line, together with the **PINBRAZING** and **SAFEBOND®** Systems.

SAFEPLUG® is developed to have as low transition resistans as possible between the cable lug and the rail in total (and not only between rail and bush that is mounted in the hole of the rail). This due to an extra silver plated copper bush and that the bush expands along the entire contact surface against the rail.

The bolts are of high strength stainless steel which allows the cable lug to be mounted with higher torque, 120 Nm.

SAFEPLUG® is easily mounted with a simple torque wrench or use the powerful batterydriven impact wrench, SAFE 59110, in the drilled hole in the rail.

SAFEPLUG® have, among others, following benefits compare other systems on the market:

- **Silver plated contact surfaces**
- **Double contact surface**
- **Simple to install - No special training needed**
- **Can be installed in any kind of weather**
- **120 Nm torque**
- **High strength stainless steel bolt**



Assembling is very simple and heavy hydraulic tools are not needed.

1. A hole is drilled in the web of the rail.
2. Chamfer the edges on the hole.
3. Clean the hole with a rag.
4. The silver plated bush and the assembly tool are pursued in the hole and then threaded through with the torque wrench.
5. Bolt and cable shoe is threaded though in the bush.

One can when necessary disassemble and reassemble the cable shoe.



Railbonds of all kinds and sizes are obtainable.

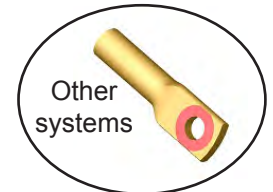
SAFEPLUG®s unique properties:

1. Silver plated contact surfaces Patent Pend.

The bush and its parts are all silver plated, which guarantees good conductivity and minimizes risks of corrosion. Silver is that metal that has the best electrical conductivity of all metals.

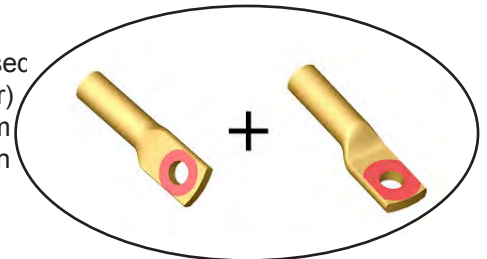
2. Polished plug

When the plug is assembled becomes the flange of the plug automatically verge scraped and blank burnished by the assembling tool. The cable shoe's underside lands up therefore on a clean flat surface.



3. Doubled contact surface

The bolt enters as an active part in the electrical circuit and is conic pressec into the bush. This means that also the cable shoe's topside (via nut and washer) will enter in the electrical circuit. This means that the SAFEPLUG® system can take larger power charges i e one can connect larger cable areas than existing drilling systems without needing to go up in size of the plug.



SAFEPLUG®
Double contact-surface

4. High strength stainless steel bolt

Unique steel. Both stainless and high strength. Similar to 10.9 classification.

5. Flat pressed cable shoe

Normally, the cable shoe is pressed against the flange of the plug with a rather moderate force. Irregularities and deformities in cable shoe, plug flange and washer may means that the contact surface becomes meagre, and that wedge-shaped columns arise between the surfaces. These columns occupy moisture and seem corroding on the bond. SAFEPLUG® uses high-tensile steel bolt that permits such high assembly force that the cable shoe is plastic strained against washer and plug. The cable shoe seals against the plug and washer 100% without spring back.

6. Higher surface preassure

The bolt material are stainless and of high strength steel which allows the cable lugs to be mounted with higher torque - 120 Nm. That makes them better suited for temperature difference.

7. Sealed bond

All contact surfaces between cable shoe, bush and rail is gas-tight, which is a requirement in order to the electrical connection will not be deteriorated because of corrosion over the time.

8. No hydraulic tools

There is no need of extra hydraulic tools in order to draw through the bush. Only a simple mechanical assembling tool is needed. Use the assembling tool together with a std. torque wrench or a powerful battery driven impact wrench, SAFE 59110. Which is a great benefit since it could also be used to mount the cable lugs.

Part No.	Denomination	Drill hole size ø
SAFE 59001	SAFEPLUG® M12	19 mm
SAFE 59002	SAFEPLUG® Twin M12	19 mm
SAFE 59003	SAFEPLUG® M10	13,5 mm
SAFE 59004	SAFEPLUG® Twin M10	13,5 mm



Torque Wrench
SAFE 59106



Assembling Tool
SAFE 59101



Impact Wrench
SAFE 59110

Rail Drilling Machine

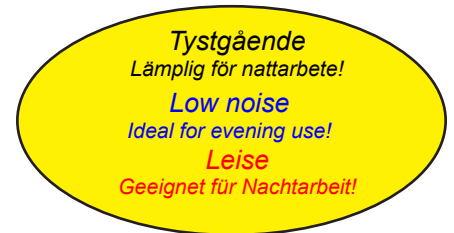



RAIL RHINO 4


Rotabroach®

4-takts Rälsbormaskin 4-stroke Rail Drilling Machine SAFE 5954

**The
Rhino**



 Den nya 4-takts bormaskinen från Rotabroach® har redan skapat sig ett rykte som den enda 4-takts maskinen som verkligen håller. Minimalt med avgaser samt väldigt lågt motorljud gör att den går att använda i tunnlar samt gör den lämplig för nattarbete. Rotabroachs superkoncentrerade skärolja, RD208, som droppdistribueras till skären gör dessutom att man slipper bära med sig massa vatten. Tänker man på miljö och hälsa med högsta kvalitet så är RHINO 4 det bästa alternativet i dag på marknaden. Honda® förbränningsmotor sörjer för att den är lättstartad, tyst samt har väldigt lågt underhållsbehov.

 Rotabroach, who have led the way in holecutting equipment for international railways, have made another major breakthrough with the development of a 4-stroke petrol rail drilling machine. All Rail Rhino machines feature the unique Rotabroach template system which enables two different rail forms to be accommodated with a single template. Used in conjunction with the hole center locator system, drilling becomes simple and accurate. All Rotabroach Rail Rhino drills are supplied with an oil feed pump assembly which provides a pressurised flow of lubricant to the cutting edge. A unique super concentrated lubricant, RD208, can be used that makes it not necessary to carry heavy water for coolant. These machines are also supplied with cutter pilots.



Rail Rhino 4 Features:

- Light and highly portable at just 18kgs making it the ideal machine for remote locations and areas of limited access.
- Unique template system ensures accurate hole height and centre location every time without measuring.
- Single lever action allows the operator to easily actuate and cut in one movement, saving time.
- Optional carrying/storage case.

Teknisk Data

Längd(L) 550 mm
Bredd(W) 420 mm
Höjd(H) 380 mm
Vikt(Weight) 18,5 kg
Honda 4 taktare (4 Stroke)
Fart(speed) 167 rpm
Kylning genom spindeln
Oljedoseringsflaska ingår



SAFE 5953RB CM 127 - Electric Rail drill

A powerful, lightweight and userfriendly electric rail drill. Weight 16kg. 230V AC. 1100W.

Rail Cutters/Kärnborr

Other sizes available.

SAFE No.

- | | |
|--------------|-------------------------------|
| 59 HR250 19R | Tungsten carbide cutter ø19mm |
| 59 HR250 33R | Tungsten carbide cutter ø33mm |
| 59 RCV190 | High Wear Cutter std. ø19mm |
| 59 RCV220 | High Wear Cutter std. ø22mm |
| 59 RCV320 | High Wear Cutter std. ø32mm |
| 59 RCV330 | High Wear Cutter std. ø33mm |



Cutting Fluid RD208
Skärolja RD208
1 litre(l), SAFE 59571
5 litre(l), SAFE 59573
25 litre(l),SAFE 59576



SAFE 59579 SAFETRACK Super Drilling Paste


Especially developed for drilling in rails.


A small drop on the tip of the drill is enough for one hole. No more coolant bottles to care with you!

Rail Drilling Machine

Elektrisk bormaskin för växeltungor Electric drilling machine for switchpoints

SAFE 5955RB

 A powerful electric drilling machine for switch rails.
Special clamps system for switches.
For drilling holes to switch bars.
Specialclamp system with quick attachment for switch points.
Light, easy to mount with no loose parts.
Powerful with variable speed.

 En kraftfull elektrisk växelbormaskin som är testad och utvecklad i samarbete med Infranord.
För borrar av hål till växeldragstång.
Specialclampsystem med snabbfäste för växeltungor.
Lätt, snabb att montera samt inga lösa delar.
Kraftfull med variabel hastighet.



Cutting Fluid RD208
Skärolja RD208
1 litre(l), SAFE 59571
5 litre(l), SAFE 59573
25 litre(l),SAFE 59576



SAFE 59579 SAFETRACK Super Drilling Paste
Especially developed for drilling in rails.



Utvecklad i samarbete
med Infranord

Technical data

Length: 300mm
Width: 240mm
Height: 480mm
Weight: 19kg
Voltage: 230 V AC
Power: 1100W

Light
Powerful
Variable speed, 350-600 rpm
Quick attachment for switchpoints

Teknisk data

Längd: 300 mm
Bredd: 240 mm
Höjd: 480 mm
Vikt: 19 kg
Spänning: 230 V AC
Effekt: 1100W

Lätt
Stark
Variabel hastighet, 350-600 rpm
Snabbfäste för växeltungor

Drills with special alloy
for railhardness < 1200 N/mm²

Spiralborr/ Twist drill (with cooling)

23 mm 59 SBW 230
27,5 mm 59 SBW 275



Kylning/cooling -adapter

17-27,5 mm 59 SBW 17-27,5

Rail Cutters/Kärnborr Hårdmetall

23 mm 59 RLK 23R
27,5 mm 59 RLK 27,5R
Adapter f. 23 mm hole 59 RLK 27,5 A



Ejector pin/ Centrumpinne

59 HR025 For railcutters L: 30 mm

Other sizes available.

Fästklammer / Fixing clamp / Spikes

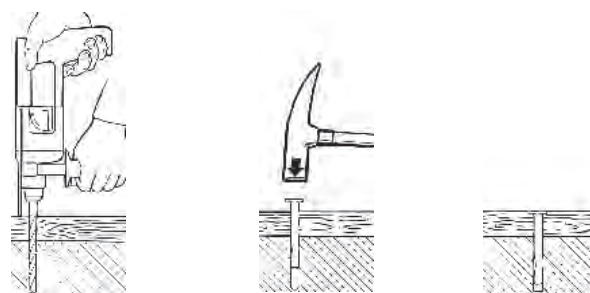


SAFE nr. SAFE No.	BV nr.	Avsedd för: (mm) Use for: (mm)	Antal/förp. Qty/pack
SAFE 7026	-	Ø 6-8	100
SAFE 7027	-	Ø 10	100
SAFE 7028	-	Ø 11	100
SAFE 7029	-	Ø 13	100
SAFE 7039	0419015	Ø 16	100
SAFE 7032	0625279	Ø 20	100
SAFE 7040	0676535	Ø 25	100
SAFE 7055	-	Ø 30	50
SAFE 7031	-	2 x Ø 13	50

For fixing to wood or concrete sleepers.
Special made for railway and heavy duty use
Made in acid proof stainless steel.
Extra thickness 1,5(7027)-2 mm.
Fix with screw and plug or simple with Spikes, see below.

*För fastsättning i trä eller betongslipers.
Tillverkad i syrafast rostfritt stål och är extra
kraftig för att bättre tåla arbetsmaskiner vid
spårarbeten.*

Spikes



...simply pre-drill ...hammer in... ...and that's it!

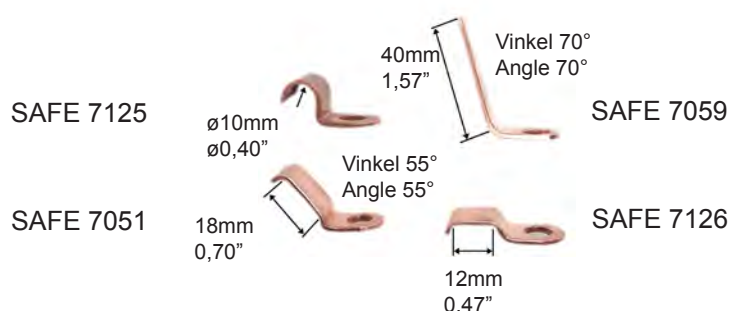
En enkel och snabb monteringsmetod
för betong, fulltegel och natursten.
Borra och slå i spiken. Ingen plast-
plugg som kan åldras.

A simple and quick method to
fix in concrete, brick or stone.
Drill the hole, knock in the spike.
No aging plastic plug.

SAFE nr. SAFE No.	Dimension (mm)	Klämlängd (mm) Fit length (mm)	Antal/förp. Qty/pack.
SAFE 7401	4,8x25	3	500
SAFE 7402	4,8x32	10	500
SAFE 7403	4,8x38	16	500
SAFE 7404	4,8x51	29	500
SAFE 7405	4,8x64	32	500
SAFE 7406	4,8x76	44	500
SAFE 7407	4,8x89	57	250
SAFE 7408	4,8x102	70	250
SAFE 7409	4,8x115	83	100

SAFE 7420 Hårdmetall borrar 4,8x110 för Spike.
SAFE 7420 Hard metal drill 4,8x110 for Spikes.

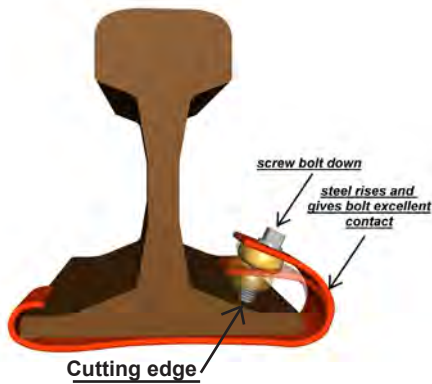
Pinbrazing clip



Temporary RailBond / Tillfällig kontaktförbindning



T-COD



Safetrack's unique temporary bonds are used as temporary signal bonds or as a permanent short circuit device (track circuit operating device, T-COD). Easily fitted with a spanner.



Locking bolt and key as optional to avoid sabotage.

Approved by Railtrack, UK, Cert.No. PA 05/361

Safetrack's unika tillfälliga förbindning används som en tillfällig signalförbindning eller som ett permanent kortslutningsdon (T-COD). Monteras enkelt med en skiftnyckel eller med en sabotagesäker specialnyckel.

Temporary railbond

Area (mm ²)	Length (mm)	SAFE no.	BV no.	Rail size	Colour
25	1560	SAFE 7082	0626625	50 kg	Red
25	1560	SAFE 7086	0626627	UIC60	Yellow
25	1560	SAFE 7135	-	35 kg	Yellow
25	3000	SAFE 7230	-	UIC 60	Yellow
50	1000	SAFE 7233	-	50 kg	Red
50	1000	SAFE 7240	-	UIC 60	Yellow
50	1200	SAFE 7232	-	50 kg	Red
50	1200	SAFE 7242	-	UIC 60	Yellow
50	1400	SAFE 7241	-	UIC 60	Yellow
50	1600	SAFE 7267	-	50 kg	Red
50	1600	SAFE 7246	-	UIC 60	Yellow
50	1700	SAFE 7245	-	UIC 60	Yellow
50*	1650	SAFE 7239	-	UIC 60	TCOD/Yellow
50	2000	SAFE 7231	-	50 kg	Red
50*	1650	SAFE 7265	-	Bullhead	TCOD/Red
95	1000	SAFE 7254	-	35 kg	Yellow
95	1000	SAFE 7255	-	50 kg	Red
95	1000	SAFE 7257	-	UIC 60	Yellow
95	1600	SAFE 7258	-	35 kg	Yellow
95	1600	SAFE 7259	-	50 kg	Red



Accessory:
Bag for the TCOD/
Temporary Railbonds
Part no. SAFE 7008



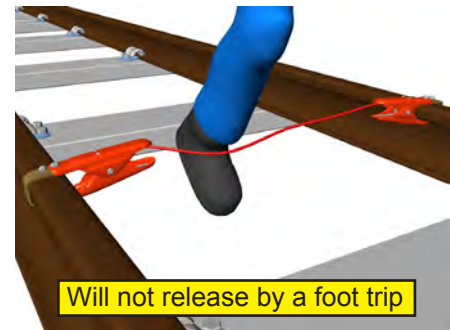
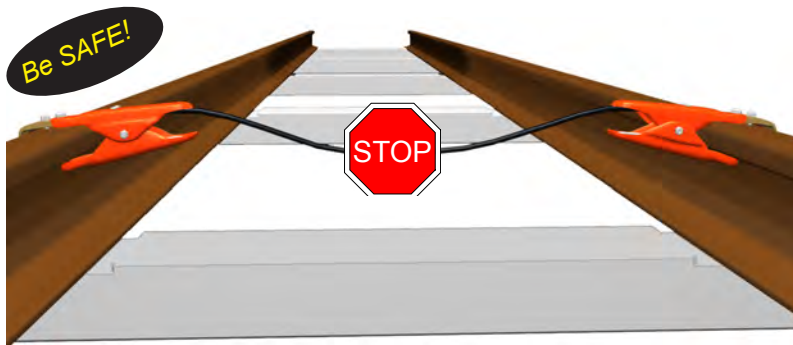
*) TCOD delivered with locking bolt as standard
Locking key, SAFE 7012, not included





Temporary clamp

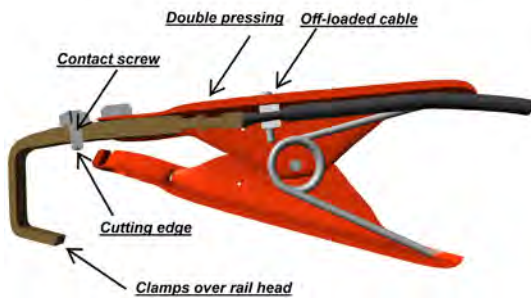
SAFE no.	Connection	Rail size
SAFE 7019	M8-bolt	50 kg
SAFE 7078	M8-bolt	UIC 60
SAFE 7136	M8-bolt	35 kg
SAFE 7003	Cable up to 150 mm ²	50 kg
SAFE 7004	Cable up to 150 mm ²	UIC 60

Track Circuit Shunt - Kortslutningsdon



 The **SAFETRACK**® Track Circuit Shunts or Short Circuit Device is a very safe shunting device used to short out the track circuits to give a "stop" condition. Will not even release by a foot trip, thanks to a well thought-out design. Fits most types of rail profiles. The tongs are easily fitted to the rail and have an excellent contact grip. Orange painted for good visibility.

 Används för att kortslua spårledningen så att stoppsignal ges. Passar de flesta räilstyper. Kontaktdonet fästs lätt på rälen och ger mycket god kontakt. Kontaktdonet är robust med avlastning på kabel och dubbla pressningar. Färgen är orange för att öka synligheten.



SAFE no.	BV no.	Length (mm)	Qty/pack.	Note
SAFE 7033	-	2450	2	
SAFE 7034	-	1660	2	
SAFE 7034b	626630	1660	2	Extra insulated
SAFE 7034dk	-	1660	2	
SAFE 7035	-	1760	2	
SAFE 7035b	-	1760	2	Extra insulated

New!
Accessory:
Bag for the Short circuit device, SAFE 7008

Nyhet!
Tillbehör:
Väska med kardborrelåsning och axelrem, SAFE 7008



Technical specification

Cable lug: Hot pressed brass
Contact screw: Stainless steel
Cable: Multi wire 10mm² copper
PVC insulation, red cable as optional
Tong handles: Orange painted sheet steel

Test

Voltage: 24 VDC
Voltage drop: 0,032 V
Current: 10 A
Resistance: 0,0031 Ohm



Teknisk specifikation

Kabelsko: Varmpressad mässing
Kontaktskruv: Rostfritt stål
Kabel: Mångtrådig 10 mm²
kopparkabel
PVC isolering
Handtag: Orangemålad plåt

Test

Spänning: 24VDC
Ström: 10A
Spänningsfall: 0,032V
Motstånd: 0,0031Ohm

Impact Wrenches



Phantom SAFE 5860

Technical specification

Length: 650mm
Width: 382mm
Height: 273mm
Weight: 18kg
Engine: 2-stroke, petrol
Fastening torque: 1030 Nm
Bolt diameter: 32 mm (1 1/4")
Square drive size: standard 25,4 mm (1")



JVL SAFE 58581

Technical specification

Length: 650mm
Width: 382mm
Height: 273mm
Weight: 18kg
Engine: 2-stroke, petrol
Fastening torque: 550-1700 Nm
Bolt diameter: 41mm (1 5/8")
Square drive size: standard 25,4mm (1")



Master 35 SAFE 5861

Technical specification

Length 590mm
Height 270mm
Width 445mm
Weight: 19kg
Engine: 2-stroke, petrol
Fastening torque: 500 - 1800 Nm
Bolt diameter: 16-32 mm (5/8" to 1 1/4")
Square drive size: standard 25,4mm (1")



New!



C12 PN

Battery powered Hammer Palm Nailer. Li-Ion 12 V included. Max nail size 3,4X90MM. 100 operations per charge. 1,6 kg with battery. SAFE 591092



HD18 HIW

Battery powered High Torque Impact Wrench. 610Nm. Two Li-Ion 18 V. 3,0 Ah included. 0-2,200 IPM(Impacts per minutes). 0-1,900 RPM. 3 kg with battery. SAFE 59140



HD18 PD

Battery powered Hammer Drill. 73Nm. Two Li-Ion 18 V. 3,0 Ah included. 28,000 BPM. 0-450 / 0-1800 RPM. 2,4 kg with battery. SAFE 591421



HD18 HX

Battery powered Rotary Hammer Drill. Li-Ion 18 V. 3,0 Ah included. 4 200 BPM. 3,5 kg with battery. SAFE 591402



HD18 SG

Battery powered Straight Grinder. Li-Ion 18 V. 3,0 Ah included. 21.500 RPM. 3,0 kg with battery. SAFE 591405



HD18 AG

Battery powered Angle Grinder. Li-Ion 18 V. 3,0 Ah included. 8000 RPM. Disc size 115mm. M14 thread. 2,2 kg with battery. SAFE 591403



C18 WL LED

Battery powered LED Flashlight. Li-Ion 18 V. Battery not included. SAFE 591183



C12-28 DCR

Battery powered LED Radio. Works with Milwaukee battery system 12-28V and 240VAC. 40 Watt speakers. Weather protected MP3 Docking station. Battery not included. SAFE 591181



Extra Battery

M18 Volt. 1,5 Ah. SAFE 591408
M18 Volt. 3,0 Ah. SAFE 591409
V 28 Volt. 3,0 Ah. SAFE 59114





Track Pack™

For helping you when ordering our crimping tools use **SAFETRACK®** pre-selected kits, **Track Pack™**, of the most common configurations used by Rail companies. Instead of many different article numbers you can now only use one number for your order, if that configuration fits your purpose.

*För att underlätta vid beställning av våra pressverktyg har **SAFETRACK®** samlat de, för järnvägsarbete, vanligaste förekommande produkterna som kit, **Track Pack™**. Om våra **Track Pack™** passar Ditt behov behöver Du bara beställa en artikel. Smidigt och spar tid.*



T2600

Mechanical hand tool for crimping of 10-95 sq.mm copper cables.
1,9 kg. Crimp force up to 57 kN.



V611

Hydraulic hand tool for crimping of 10-150 sq.mm copper cables.
2,5 kg. Crimp force up to 60 kN.



PVL611 DB

Battery powered hand tool for crimping of 10-150 sq.mm copper cables.
Li-Ion Makita battery. 1,3 Ah, 18 V. Charging time 15 min.
2,5 kg. Crimp force up to 55 kN. **Delivered with 2 batteries.**

SAFETRACK®, your supplier of ELPRESS® Cable crimping systems.

SAFE No. of incl. parts	Description	mm ²	T2600 Track Pack 10 SAFE 7520TP10	V611 Track Pack 20 SAFE 7525TP20	V611 Track Pack 22 SAFE 7525TP22	PVL611 DB Track Pack 40 SAFE 7583TP40	PVL611 DB Track Pack 42 SAFE 7583TP42
7520	Crimp Tool T2600	10-95	X	-	-	-	-
7525	Crimp Tool V611	10-150	-	X	X	-	-
75831	Crimp Tool PVL611DB	10-150	-	-	-	X	X
Crimp Dies for Hexagonal crimping							
7530	TB8-17	10 & 70	X	X	X	X	X
7531	TB9-13	16 & 35	X	X	X	X	X
7532	TB11-14,5	25 & 50	X	X	X	X	X
7533	TB7-20	10 & 95	X	X	X	X	X
7535	TB9-12	BV Spec.	X	X	X	X	X
7536	TB12-14	BV Spec.	X	X	X	X	X
7537	KB22	120	-	-	X	-	X
7538	KB25	150	-	-	X	-	X
For crimping C-Sleeves							
7540	TBC4-C8-9	10-6 / 10-6 50-16 / 50-16	-	-	X	-	X
7541	TBC5-C6	16-10 / 16-6 25-16 / 25-16	-	-	X	-	X



Track Pack™

Use our pre-selected kits, **Track Pack™**, for appropriate configurations for Rail service.
*Spar tid. Använd våra förvalda kit, **Track Pack™**, lämpliga för Järnvägsindustrin.*



PV 350 Mini

Battery powered crimp tool for crimping of 10-70 sq.mm copper cables.
NiMh battery. 1,3 Ah, 9,6 V. Charging time approx. 40 min.
100-150 crimps per battery charge. 1,6 kg.



PVL1300 DB

Battery powered crimp tool for crimping of 10-400 sq.mm copper cables.
Li-Ion Makita battery. 3,0 Ah, 18 V. Charging time 22 min. 60-120 crimps per battery charge, Crimp force up to 124 kN. **Delivered with 2 batteries.** 5,4 kg.

SAFETRACK®, your supplier of ELPRESS® Cable crimping systems.

SAFE No. of incl. parts	Description	mm ²	PV350 Track Pack 30 SAFE 7630TP30	PV350 Track Pack 32 SAFE 7630TP32	PVL1300 DB Track Pack 50 SAFE 7581TP50	PVL1300 DB Track Pack 52 SAFE 7581TP52
76300	Crimp Tool PV350	10-70	X	X	-	-
75815	Crimp Tool PVL1300DB	10-400	-	-	X	X
	Extra Battery	N/A	-	X	X	X
7593	Inner die holder V1316	N/A	-	-	X	X
7595	Outer die holder V1318	N/A	-	-	X	X
Crimp Dies for Hexagonal crimping						
76311	MB8	10	-	X	-	-
76312	MB9	16	-	X	-	-
76313	MB11	25	X	X	-	-
76325	MB12	BV Spec.	X	X	-	-
76314	MB13	35	-	X	-	-
76328	MB14	BV Spec.	X	X	-	-
76315	MB14,5	50	X	X	-	-
76320	MB16	BV Spec.	-	X	-	-
76316	MB17	70	X	X	-	-
7602	B11	25	-	-	X	X
76022	B12	BV Spec.	-	-	X	X
7603	B13	35	-	-	X	X
76032	B14	BV Spec.	-	-	X	X
7604	B14,5	50	-	-	X	X
76042	B16	BV Spec.	-	-	X	X
7605	B17	70	-	-	X	X
7606	B20	95	-	-	X	X
7607	B22	120	-	-	X	X
7608	B25	150	-	-	X	X
7610	13B30	240	-	-	-	X
75293	BL12BV	f. dropper wire	-	-	-	X
For crimping C-Sleeves						
76134	BC8-9	50-16 / 50-16	-	-	-	X
76135	BC11	70-50 / 70-25	-	-	-	X
76136	13BC13	95-70 / 95-25	-	-	-	X
76137	13BC15	120-95 / 120-25	-	-	-	X



Track Pack™

Use our pre-selected kits, **Track Pack™**, for appropriate configurations for Rail service. *Spar tid. Använd våra förvalda kit, **Track Pack™**, lämpliga för Järnvägsindustrin.*



V250

Crimp head for crimping of 10-800 sq.mm copper cables. Used together with foot pump P4000 or battery / mains powered pump PS700. Crimp force 250 kN. 4,6 kg.



P4000

Hydraulic foot pump for use with crimp head V250. Standard setting 630 bar (max 700 bar). 8,6 kg.



PS700

Battery and mains powered pump for crimping with crimp head V250 for example. 24 V NiMH battery or 230 V mains power supply (110V optional). Working pressures up to 700 bar. Hydraulic pressure work range 0-630 (700) bar. Approx. 115 crimps per charge with 150 sq.mm or 180 crimps with 50 sq.mm. Weight pump unit 12.3 kg (incl. battery). Weight mains unit with carriage 8.6 kg.

SAFETRACK®, your supplier of ELPRESS® Cable crimping systems.



Note!
Don't forget to choose pump for your **Track Pack**.



LV250

Storage box for crimp head V250. Included in **Track Pack™**

SAFE No. of incl. parts	Description	mm²	V250 Track Pack 54 SAFE 7571TP54	V250 Track Pack 55 SAFE 7571TP55
75710	Crimp Head V250	10-800	x	x
75726	Inner die holder V2508	N/A	x	x
75725	Outer die holder V2506	N/A	x	x
75854	P4000	N/A	optional	optional
7588	PS700	N/A	optional	optional
75708	LV250 Storage box	N/A	x	x
Crimp Dies for Hexagonal crimping				
7602	B11	25	x	x
76022	B12	BV Spec.	x	x
7603	B13	35	x	x
76032	B14	BV Spec.	x	x
7604	B14,5	50	x	x
76042	B16	BV Spec.	x	x
7605	B17	70	x	x
7606	B20	95	x	x
7607	B22	120	x	x
7608	B25	150	x	x
76081	B30	240	-	x
75293	BL12BV f. dropper wire		-	x
For crimping C-Sleeves				
76134	BC8-9	50-16 / 50-16	-	x
76135	BC11	70-50 / 70-25	-	x
76136	13BC13	95-70 / 95-25	-	x
76137	13BC15	120-95 / 120-25	-	x
75735	25DB3	BV Spec.	optional	optional

Cutting Tool



HS25

Kabelsax HS25 Hydraulisk. Kapar aluminium eller kopparkabel max \varnothing 25mm eller stål max \varnothing 11-18mm beroende på hårdhet.

- Kaphuvud kan roteras 270°.
- Snabbmatning.
- Manuell återställning till utgångsläge.
- Kapkraft 60kN.
- Väska ingår.
- Vikt 4kg.

Art Nr: **SAFE 75140**



HSI45

Kabelsax HSI45 Hydraulisk. Kapar aluminium eller kopparkabel max \varnothing 45mm eller stål max \varnothing 11-18mm beroende på hårdhet.

- Kaphuvud kan roteras 270°.
- Snabbmatning.
- Manuell återställning till utgångsläge.
- Kapkraft 60kN.
- Väska ingår.
- Vikt 7,7kg.

Art Nr: **SAFE 75144**



ASI45

Batteridrivna kabelsax ASI45. Kapar aluminium eller kopparkabel max \varnothing 45mm eller stål max \varnothing 11-18mm beroende på hårdhet.

- Kaphuvud kan roteras 360°.
- Snabbmatning.
- Ergonomiskt utförande.
- 14,4V/2,6Ah Ni-MH batteri.
- Batteriindikator.
- Kapkraft 60kN.
- Väska ingår.
- Vikt 8kg.

Art Nr: **SAFE 75146**



ASI85

Batteridrivna kabelsax ASI85. Kapar aluminium eller kopparkabel max \varnothing 85mm.

- Kaphuvud kan roteras 360°.
- Snabbmatning.
- Ergonomiskt utförande.
- 14,4V/2,6Ah Ni-MH batteri.
- Batteriindikator.
- Kapkraft 70kN.
- Väska ingår.
- Vikt 9,5kg.

Art Nr: **SAFE 75148**

Kontaktledningsklämma



Kontaktledningsklämma för alla typer av installationer.

- Låg vikt.
- Flexibel och rörlig trådanslutning.
- Kan göras ljusbågsfri.
- Återanvändningsbar.
- Passar de allra flesta ledningsstorlekar.

Art.nr.

Klämma för användning med kaus, SAFE 49211

Kaus rostfritt stål, SAFE 49216

Presshylsa, SAFE 49218

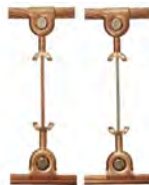
Kabelsko, 10mm²-M10, SAFE 49220



Isolerad lättviktskontaktledningsklämma.

- Material: Aluminium.
- Exceptionellt låg vikt.
- Isolerad. Ljusbågsfri.
- M8 eller M10 skruvanslutning.
- Återanvändningsbar.
- Passar de allra flesta ledningsstorlekar.

Art.nr. SAFE 49213



Kontaktledningsklämma justerbar i fält med endast en skruv.

- Enkel och snabb montering.
- Ingen kontaktpressning. (försvagar ej bärtråden)
- Justerbar i fält.
- Låg installationskostnad.
- Ger högre kvalitet på kontaktledningssystemet. Direkt!
- Låg vikt.
- Ljusbågsfri.
- Återanvändningsbar.
- Passar de allra flesta ledningsstorlekar.

Art.nr. SAFE 49205



Flexibel, glidande kontaktlednings upphängning för låghöjds-system.

- Användning av standardkomponenter.
- Finns som ljusbågsfri
- Finns i isolerat utförande.
- Återanvändningsbar.
- Justerbar mellan 100-300mm systemhöjd.

Art.nr. Standard, SAFE 49241

Art.nr. Ljusbågsfri, SAFE 49242



Automatisk viktavspänningssystem.

- 60 års underhållsfrihet!
- Smörjningsfri.
- Inget behov att byta wire.
- Självjusterande.
- Högsta säkerhet-Om wire går av fångas vikten automatiskt upp.

Signal Horn



Heavy Duty Signal Horn

Rechargeable air horn housed in a robust, carry case.

It features a pressure gauge and can be refilled from any compressed air source. The ECO BLAST PRO has a sound output of 115dB @ 1m and provides up to 100 blast or 1 minutes of continuous signal.

Kraftigt signalhorn (115db), påfyllningsbar med vanlig tryckluft eller cykelpump! 100% miljövänlig!

Utrustad med tryckmätare så att man alltid vet hur mycket tryck som finns i tanken. Håller för upp till 100 signalleringar eller 1 minut kontinuerligt. Perfekt för tågvarnare mfl.

SAFE 97050 Heavy Duty Signal Horn

Best choice for the environment



Refil with compressed air



Best choice for the environment



Air Horn kit

Refillable, rechargeable safety signal air horn.

This air horn refills with AIR. Never buy a refill again. EcoBlast™ Air Horn quickly and easily recharges with air from a bicycle pump, service station air pump or compressor. Powerful 115 db sound meets **United States Coast Guard (USCG)** regulations. Great for sporting events.

Återfylls med vanlig tryckluft. 100% miljövänlig!

Fyll på med medföljande cykelpump eller med vanlig tryckluft från bensinstation. Metallbehållare, robust.

Passar perfekt till olika industrier som tågvarning eller till sportevenemang. Ca 30 signalleringar per laddning.

SAFE 97060 Air Horn kit med pump och väggfäste

STEBEL KP MARINA

Powerful airhorn, 111dB. 100% safe for the ozone, these horns use nonflammable gas which is free of CFCs. Durable plastic trumpets are reusable with refills.

Kraftfullt signalhorn

Avtagbart plasthorn. 111dB.
Ozon- och flamsäker drivgas.

SAFE 97040 STEBEL KP MARINA
SAFE 97041 Refill canister



Rail Heating



RWHN / RWHC
Switch point heater for the toughest conditions.



RDC
Third rail & Switch point **Long Life** Heating Cable
Unique design, extruded with a special heat transfer material for maximum performance.



SRF
Switch Rod Heater
Same technology as the RWA panels.



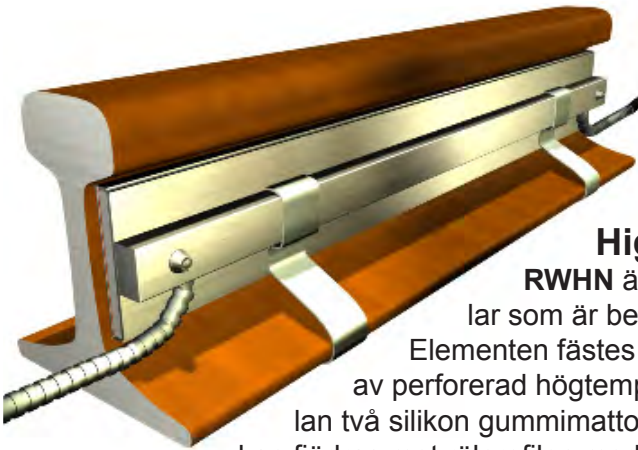
HEATY
Preheating of the rails for track welding.



Gas Bottle Heater
Preheating of propane bottles.

Rail Heating / Växelvärme

RWHN 600W/m
RWHC 800W/m



+28°C i räslivet på
10 minuter!
vid -10°C lufttemperatur.

High Power Växelvärme

RWHN är utvecklad för att snabbt smälta bort snö och is runt växlar som är belägna på platser med svåra väderförhållanden.

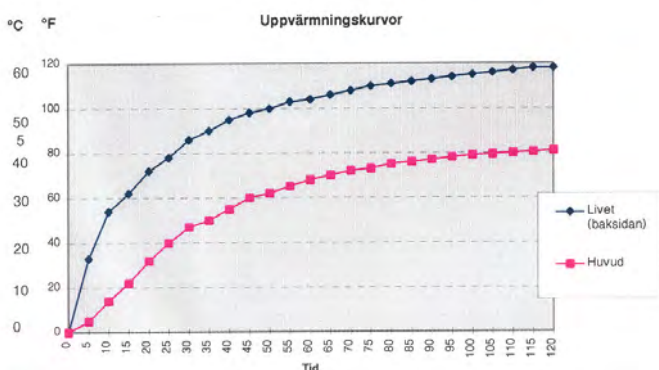
Elementen fästes till rälen med fjäderstålklammer. Värmeelementen består av perforerad högtemperatur folie med parallellkretsar. Folien monteras mellan två silikon gummimattor - förstärkta med glasfiber. Konstruktionen är bred och kan fjädras mot rälfprofilen med en stor yta. Ytterst finns ett isoleringsskikt som ser till att värmen riktas mot rälen.

Fördelen med RWHN är - att värmen inte behöver ligga på under längre perioder som bakgrundsvärme, men vid snöfall eller frost snabbt kan smälta bort nederbörden och återgå till övervaknings läge (se diagrammet) - panelerna monteras mycket snabbt bara på ytterrälen på växelns utsida.

RWHN paneler används antingen fristående tillsammans med temperaturgivare monterad på rälen och en snö/temperatur-givare, eller med ett styrskåp som ger fler styr och övervakningsmöjligheter.

Man kan också kombinera RWHN paneler med RDC värmekabel där man placerar RWHN utanför ytterrälen i höjd med växeltungan och RDC längs resten av växeln.

Värmepanelerna kan även erhållas med snabbkopplingar (RWHC) så att man snabbt kan bygga ihop dem till den längd som behövs.



Exempel :		
Luft/räl-temperatur	-10 °C	
	Huvud	Livet
Efter 10 min	+ 8°C (-2 °C)	+ 28°C (+18°C)
Efter 30 min	+ 25°C (+ 15°C)	+ 45°C (+35°C)
Efter 120 min	+ 43°C (+ 33°C)	+ 60°C (+50°C)



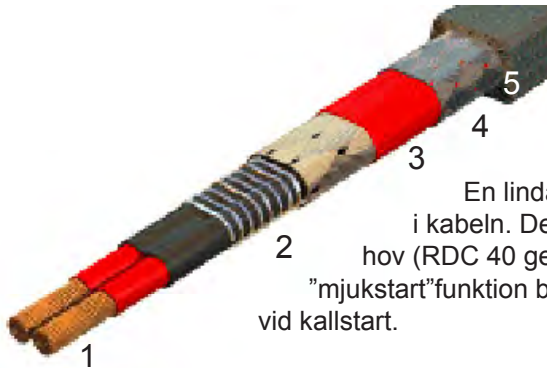
RWHN 250 - 250x50mm 150W/240VAC. Art.nr. SAFE 44701
RWHN 500 - 500x50mm 300W/240VAC. Art.nr. SAFE 44703
RWHN 1000 -1000x50mm 600W/240VAC. Art.nr. SAFE 44705

Med snabbkoppling:
RWHC 6 - 203x76mm 162W/240VAC Art.nr. SAFE 44801
RWHC 8 - 254x76mm 215W/240VAC Art.nr. SAFE 44803
RWHC 10 - 305x76mm 270W/240VAC Art.nr. SAFE 44805
RWHC 12 - 457x76mm 325W/240VAC Art.nr. SAFE 44807

Rail Heating

Long Life Värmekabel för Spår, växlar och strömskena

RDC



RDC är en unik Power Limiting parallell-resistiv värmekabel som är framtagen efter järnvägsindustrin behov av en kraftfull, robust och effektiv värmekabel till spår, strömskena samt spårväxlar.

En lindad motståndstråd (patent) ombesörjer strömbegränsningen i kabeln. Detta tillåter RDC kabeln att leverera maximal effekt vid behov (RDC 40 ger 131 W/m, RDC 30 ger 98 W/m). Tack vare en inbyggd "mjukstart"funktion behöver man inte säkra upp anläggningen på en strömrusning vid kallstart.

RDC är belagd med ett unikt yttre silikonbaserat hölje som blir mjukt av värmen och är termiskt ledande vilket ger en överlägsen värmeöverföring till rälen. RDC används både för AC och DC. RDC är väldigt enkel att installera. Kan levereras löpande längd på trumma eller fabriksmonterade anslutningar i bestämda längder.

RDC används antingen fristående tillsammans med temperatur givare monterad på rälen och en snö/temperatur-givare, eller med ett styrskåp som ger fler styr och övervakningsmöjligheter.

Det går även att kombinera RDC med RWA/RWH värmepaneler där man placerar RWA/RWH utanför ytterrälen i höjd med växeltungan och RDC längs resten av växeln.



- 1)Bus wires 10 AWG.....Nickel-plated copper
 - 2)Heating element.....Power limiting coiled resistor
 - 3)Primary dielectric insulation.....PFA Teflon
 - 4)Metallic braid.....Nickel-plated copper
 - 5)Outer jacket.....Silicone based
- Supply voltage.....100 - 600 Vac; 600 - 900 Vdc

Teflon är ett registrerat varumärke av E.I. duPont de Nemours & Co., Inc.

Catalog Number	Operating Voltage	Thermal Rating ² Watt/ft (Watt/m)	Maximum Circuit Length ³	Heating Zone Length	Maximum Current ⁴ Amps/ft. (Amps/m)
RDC30-625 BNCSOJ	625 Vdc	30 (98)	541 (165)	48 (121)	0.0592 (.194)
RDC40-240 BNCSOJ	240 Vac	40 (131)	237 (72.3)	18 (46)	0.1973 (.647)
RDC40-480 BNCSOJ	480 Vac	40 (131)	475 (145)	36 (92)	0.0986 (.323)
RDC40-625 BNCSOJ	625 Vdc	40 (131)	619 (189)	48 (121)	0.0757 (.248)
RDC40-900 BNCSOJ	900 Vdc	40 (131)	700 (213)	60 (152)	0.0526 (.173)

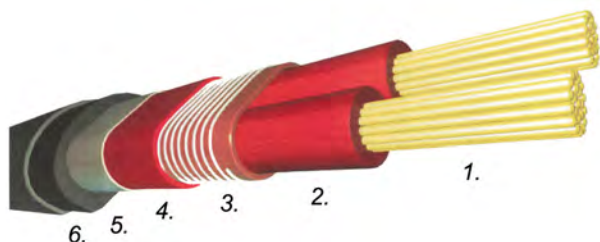
² Thermal rating is based on rail temperatures of 32°F (0°C) and service voltage as indicated.

³ Maximum circuit length is based on 10% power drop and rail temperatures of 32°F (0°C). Today max. Circuit Length is 411 m.

⁴ Maximum current is based on start-up at -40°F (-40°C) and service voltage as indicated.

Tillverkat och testad enligt IEEE 515.1

Rail Heating RDC Accessories / Tillbehör



1. Strömledare:
2. Isolation:
3. Värmeelement:
4. Primärisolering:
5. Skyddsmantel:
6. Ytterhölje:

Förnicklad koppar
 PFA Teflon
 Strömbegränsande motståndstråd
 PFA Teflon
 Metallfläta av förnicklad koppar
 Silikonbaserat

SAFE 41015	RDC 30/230V/10 AWG Löpande längd
SAFE 41074	RDC 40/800V/8 AWG Fabriksansluten Max L= 411 m
SAFE 41072	RDC 40/800V/8 AWG Löpande längd på rulle
SAFE 4104	RDC 40/750V/10AWG Fabriksansluten Max L=ca 150 m
SAFE 41041	RDC 40/750V/10AWG Löpande längd på rulle



GFK 10 Glasfiberkanal 1,88 m (74").
 SAFE 4218.



Klammer f. BV 50. Rostfri. SAFE 4206
 Klammer f. UIC60. Rostfri. SAFE 4207
 CKL Klammer f. 60 kg strömskena. Rostfri. SAFE 4205
 Klammer f. 26 kg strömskena. Rostfri. SAFE 4210



Strömanslutningssats PC-RDC-3C-10AWG. exkl. kallkabel.
 För RDC 30/230V/10AWG. Använd skarvkabel 6AWG.
 SAFE 43052

Strömanslutningssats PC RDT-8AWG. exkl. kallkabel.
 För RDC 40/800/8AWG. Använd skarvkabel 6AWG.
 SAFE 43155 / SL 719946

Strömanslutningssats PCRD-1C-10AWG-8. exkl. kallkabel.
 För RDC 40/750/10AWG. Använd skarvkabel 8AWG.
 SAFE 4305 C.



Ändavslutningssats ETRD-1C-10AWG
 SAFE 4306

Ändavslutningssats ET RDT-8AWG.
 För RDC 40/800/8AWG
 SAFE 43156 / SL 719940



Fältskarvsats f. RDC40/800/8AWG
 SAFE 43128
 Fältskarvsats f. RDC40/750/10AWG
 SAFE 4312.



Skarvkabel 8AWG PFA 1000V
 för RDC 40/750V/10AWG.
 SAFE 4302.



Skarvkabel 6AWG PFA 1000V
 för RDC 40/800V/8AWG.
 SAFE 43026.

Monteringsverktyg m.bygel för
 Klammer 4205 (60kg)
 SAFE 43362.



Växelstångsvärmare **SR / SRF**



SRF 60 är en platt flexibel värmepanel som placeras under växelstången så att den kan hållas isfri. Den är baserad på Thermons "multiple path Iconel 600" värme element. (Mått: t=3 mm : L=1524 mm : B= 203 mm)

Elementet är inbyggt mellan 2 st silikongummi isoleringar och täckt med 2 st galvaniserade stålplåtar. Plåtarna är uppbockade för att hjälpa smältvattnet att rinna bort.

Panelen har två strömledare 500 mm långa.

Ström 833 watt vid 220-240 V
Yteffekt ca 30 W /dm²

Lätt att installera	Värmaren är helt plan och läggs under växelstången
Vinklade kanter	Samlar upp smältvattnet som leds bort
Snabb värme	833 Watt över en 1524 x 203 mm yta
Snövakt	Reglerar start och stopp
Energisnål	Låg watt densitet design

Track Welding / Spårsvetsning



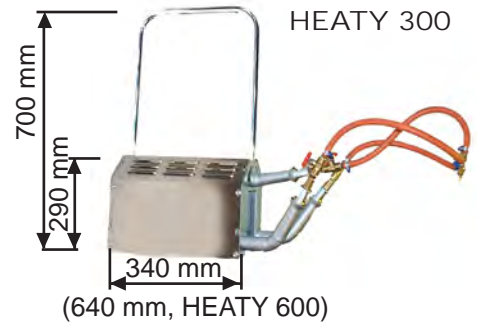
HEATY

Rail Heater

HEATY 300, L=300mm, SAFE 4045
HEATY 600, L=600mm, SAFE 4048

Heating with HEATY means:

- Even heat distribution
- Exact and even holding heat
- Only propane necessary
- Easy to handle
- Fast heating
- Adjustable heaters



Gas bottle heater / Flaskvärmare



Used for welding during cold weather conditions at work site.
Vulcanized silicon rubber with integrated heating cables and quick connector.
Delivered with 4 metres cable to the mains, IP 67 for 230 V.

Används till svetsning där gasolflaskor utsätts för kyla. (+10°C och lägre)
Vulkaniserat silikongummi med integrerad värmekabel och snabbspännen.
Levereras med 4 meter anslutnings- kabel med stickpropp, iP 67 för 230 V.



Delivered with storage tube.
Levereras med förvaringstüb.

SAFE no	Thermostat	Over heat protection	Bottle size	Measure
SAFE Nummer	Termostat	Överhettningsskydd	Flaskstorlek	Mått
4052b 1500W	max +30 °C	max +45 °C	P19 & bigger	915x455 (36'' x 18'')
40532 1000W	max +30 °C	max +45 °C	P11	860x330 (34'' x 13'')
40535 500W	max +40 °C	max +55 °C	P6	250x600 (10'' x 24'')

Must be used with earth fault breaker!

Får endast anslutas mot jordfelsbrytare!

Welders seat with fan



Powered with 12 V DC from the welding equipment or a generator.

SAFE RW10170 With fan.
SAFE RW10171 Exclusive fan.
L: 470mm, H: 300-400mm, W: 240mm.

Accessories

SAFE RW10180 Power Supply Unit that transform 90-264VAC to 12VDC. 5m cord included.

SAFE RW10174. Seat Rest (Chest plate) and spring locking system to secure the seat to the rail.



Screening

Screening - Arc Welding



SAFE no
57330 1,5x1,2m (5' x 4')
57331 0,9x0,75m (3' x 2,6')

SAFE no
57250 Track Welding Tent
2,5x2,5x2m
57255 Arc Welding Tent
2,5x2,5x2m

Thermometer

SAFE no
97304 Digital Rail Thermometer
97305 Analog Rail Thermometer



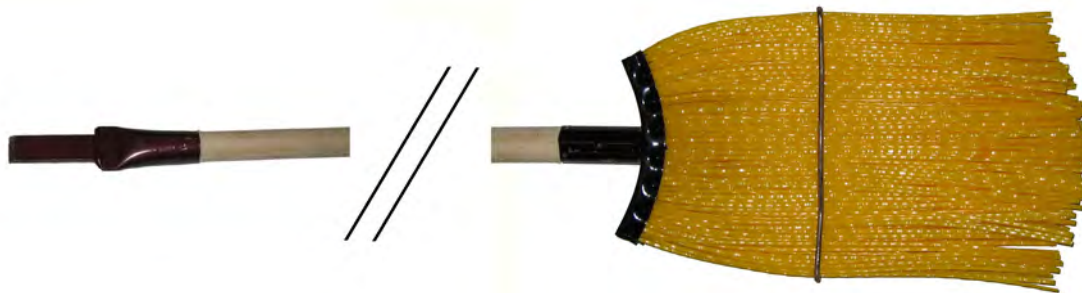
High quality brooms made for the railway industry for snow fighting and cleaning in switch points etc.
Robusta och högkvalitativa växelkvastar för effektiv snö och isbekämpning i växlar.

TYPE 2E Heavy Duty Extra

Extremely rugged design. Length of the fill material is 310 mm. Three rows of the extra thick fill material. Metal reinforced together. 1.5 m long wood handle, 28 mm in diameter.

Chisel in the top of the handle.

Part No. SAFE 96802E



TYPE 5 Heavy Duty Standard

Extremely rugged design. As above but with a little bit shorter fill material in the broom and no extra metal reinforcement but still very rugged. Length of the fill material is 210 mm. Thick fill material.

1.5 m long wood handle, 28 mm in diameter.

Chisel in the top of the handle.

Part No. SAFE 96805



SAFETRACK reserves the right to change the design of the products.
SAFETRACK förbehåller sig rätten att ändra detaljutformning på produkterna.

Work Tents / Arbetstält

Track Welding Tent / Spårsvetstält

2,5x2,5x2m. Translucent reinforced cover. Flame retardant. Approved for track welding. Suitable down to -10°C. Weight 25 kg. **SAFE 57250**

2,5x2,5x2m. Transparent armerad Flamsäker duk. För spårsvetsning. Lämpligt ner till -10°C. Vikt: 25 kg. **SAFE 57250**



Arc Welding Tent / Bågsvetstält

2,5x2,5x2m. Extra spark and arc protected blue sides with translucent roof. Flame retardant. Suitable down to -10°C. Weight 25 kg. **SAFE 57250**

2,5x2,5x2m. Blå väggar som är extra motståndskraftiga mot gnistor och ljusbågar. Transparent tak. Flamsäker duk. Lämpligt ner till -10°C. Vikt: 25 kg. **SAFE 57255**



Cable Joint Tent / Kabelskarvtält

One zip in front and back. White cover are suitable to -30°C, translucent to -10°C.

En dragkedja fram och en bak. Vit duk är lämplig ner till -30°C, transparent -10°C.

White cover / Vit duk

1,8x1,7x1,65m. 9 kg.	SAFE 57132P. (Triangular / Triangeltält)
1,8x1,8x2m. 13,5 kg.	SAFE 57162P.
2,1x2,1x2m. 15 kg.	SAFE 57191P.
2,5x2x1,9m. 19 kg.	SAFE 57137P. (Triangular / Triangeltält)
2,5x2,5x2m. 19 kg.	SAFE 57247P.



Translucent cover / Transparent duk

1,5x1,5x1,45m. 9 kg.	SAFE 57130. (Triangular / Triangeltält)
1,8x1,8x1,7m. 10 kg.	SAFE 57135. (Triangular / Triangeltält)
1,8x1,8x2m. 15 kg.	SAFE 57162.



Electrical Cabinet Tent / Elskåpstält

Large opening in front, two zips or more. White cover are suitable to -30°C, translucent to -10°C.

Två eller fler dragkedjor fram. Vit duk är lämplig ner till -30°C, transparent -10°C.

White cover / Vit duk

1,8x2,5x2m. 22 kg. 3 Zips in front 1 zip in rear.	SAFE 57165P.
2,1x2,1x2m. 15 kg. 3 Zips in front 1 zip in rear.	SAFE 57190P.
2,5x2,5x2m. 19 kg. 3 Zips in front 1 zip in rear.	SAFE 57246P.
3x3x2,15m. 35 kg. 3 Zips in front 1 zip in rear.	SAFE 57281P.



Translucent cover / Transparent duk

1,8x1,8x2m. 20 kg. 2 Zips in front 1 zip in rear.	SAFE 57240.
2,4x2,4x2,1m. 20 kg. 3 Zips in front 1 zip in rear.	SAFE 572470. (Pipe welding tent)
2,7x2,7x2m. 25 kg. 2 Zips in front.	SAFE 57270



Umbrella / Arbetsparasoll

Ø2 m. White cover. Folding. 5 kg. SAFE 57123.
Ø2 m. Vit duk. Vikbart. 5 kg. SAFE 57123.

Ø2,4 m. Translucent cover. Non folding. 4,4 kg. SAFE 57120.
Ø2,4 m. Transparent duk. 4,4 kg. Ej vikbart. SAFE 57120.

Rail clamp for umbrella. Rålsfäste för parasoll. SAFE 57122A.



Fler tält på: www.arbetstalt.se

Batteridrivnen ARBETSBELYSNING RALS-Remote Area Lighting Systems

Uppladdningsbart Batteridrivet strålkastarsystem med LED teknologi för fält-mässiga förhållanden. Belönats med det "Ekologiska Produktpriset" av den franska järnvägen (SNCF) då man slipper använda generator vid nattarbeten och i tunnlar. På några minuter monteras strålkastaren på den världsberömda, okrossbara, vattentäta och hjulförsedda PELI väskan (gäller Peli 9450B, 9460 och 9470), färdig att användas.



Lamporna omfattas av PELI's villkorlösa livstidsgaranti under devisen:
-You break it, We replace it...FOREVER!™



PELI 9430

- Extremt kraftigt ljus 2000 lumen/8h eller 1000 lumen/15h.
- Kan användas med axelrem eller stående med 0,82 m lång teleskopsstång.
- Unikt arbetsljus som kan användas som strömkälla till annan utrustning
- Vikt, 10kg

Bestnr. SAFE 98390



PELI 9450B

- Batteritiden är 17h på låg effekt och 9h på hög effekt
- Testad Lumen värde :1280 vid 2,1m höjd på stängen.
- 16 st 1W LED's
- Vikt, 21kg

Bestnr. SAFE 98391



PELI 9460

- Batteritiden är 14h på låg effekt och 7h på hög effekt
- Testad Lumen värde :2000 Hög och 1000 Låg
- 48 st 1W LED's
- Vikt, 23kg

Bestnr. SAFE 98392



PELI 9470

- Batteritiden är 14h på låg effekt och 7h på hög effekt
- Testad Lumen värde :2000 hög och 1000 låg
- 96 st 1W LED's
- Vikt, 40kg

Bestnr. SAFE 98393

Tillbehör till PELI 9430

- Trefotsstativ, SAFE 98389
- Extra strålkastare, SAFE 98388



Signal Lamps / Signallampor



Halo Plus2

Heavy Duty super bright LED signallamp.

HP11R2VT - Red / Green (true Signal) LED and white halogen.

SAFE 98101

Kit contains:

- SAFE 98113 HP11R2VT Lamp
- SAFE 98160 Batteries(3pcs)
- SAFE 98130HTS High Tech charger

HP11R2+S - Red / Green (568nm) LED and white halogen.

SAFE 98102 (BV 6231330) contains:

- SAFE 98112ST HP11R2+S Lamp
- SAFE 98160 Batteries(3pcs)
- SAFE 98130HTS High Tech charger
- SAFE 98152 Reminder screen
- SAFE 98150 Filter pouch
- SAFE 98181 Spare lamp



HP11R2SR - Red / Yellow LED and white halogen.

SAFE 98105

Kit contains:

- SAFE 98112VT HP11R2SR Lamp
- SAFE 98160 Batteries(3pcs)
- SAFE 98130HTS High Tech charger



Red / Green / White standard bulb lamp

SAFE 98365 (BV 6231325)



Red warning lamp. (Battery SAFE 8113 not included).

SAFE 98030



Hand lamp, flashing halogen. (2x Battery SAFE 8113 not included).

SAFE 98010

Filters(not incl.): Red SAFE 98015, Yellow SAFE 98017



SAFETRACK TrackWarning Kit.

Contains 5pcs of amber colored High Visibility LED strobes attached with heavy duty magnets. Delivered in the included nylon bag.

SAFE 99860



Rail Handling



Rail Grip RG2500 SAFE 58525



The Rail Grip RG2500 is used for lifting rails. Its construction gives the ability to tow the rail with the grip turned into the direction of the pull for a short length. A simple adjustment attaches or removes the grip from the rail.

It is manufactured of strong durable materials with high tensile limits - 1000 N/mm². The Rail Grip RG2500 is treated with linseed oil.

Delivered with CE-certification. Patented.

SPECIFICATIONS

Weight	5 kg
Width	160 mm
Height	270 mm
Maximum load	2500 kg



Roller Grip RG4800 SAFE 58526

The Roller Grip RG4800 is a tool for efficient handling of rails. Due to its design it is easy to apply and minimizes the risk of damaging the rail.

The Roller Grip RG4800 is thoroughly tested and delivered with CE-certification.

SPECIFICATIONS

Weight	28 kg
Width	310 mm
Height	335 mm
Maximum load	4800 kg

HANDY CLIPPER

Clipping Tool for Pandrol Fastclip™



The Handy Clipper consists of a POWER UNIT and its different working tools; CLIPPING TOOL Standard or Heavy Duty and DECLIPPING TOOL.

The Handy Clipper is manufactured as a versatile hand held tool for smaller clipping and declipping services for FASTCLIP, has its own power supply and is ergonomically designed.

The Power Unit is supported by a wheel to the rail to relieve the operator from the weight thus preventing the operator from wearing injuries.

The Power Unit is designed with a quick connect interface which enables fast and easy connection to the different working tools.

The engine is a Honda 4-stroke engine.

Part. no.

Power Unit,	SAFE 5850
Clipping Tool Standard,	SAFE 58501
Clipping Tool Heavy Duty	SAFE 58502
Declipping tool,	SAFE 58503

SPECIFICATIONS

Power Unit/Clipping Tool Std & HD/Declipping Tool	
Weight	15 kg / 15 kg & 23 kg / 23 kg
Length	420 mm / 380 mm & 560 mm / 560 mm
Width	270 mm / 170 mm & 190 mm / 230mm
Height	350 mm / 350 mm & 370 mm / 380mm
Engine max effect	1.2 kW
Working force	Clipping Tool Standard 24.5kN Heavy Duty 37.0 kN HD
Working force	Declipping Tool 24.5 kN
Capacity	about 10 sleepers/min

Fastclip™ is a registered trademark by Pandrol Ltd.

Rail Trolleys

Rail Scooter

Product Data:

- Weight: less than 15 kg. Just carry it under your arm. Easy to lift off the rail.
- Can be broken down into three pieces. Assembly time less than a minute. No screws or nuts.
- Built-in distance meter as standard(9625 & 9626). Measurement accurate to a few tenths of a percent.
- Insulated rail wheels.
- Reversible.
- Parking brake

Produktdata:

- Vikt mindre än 15 kg, bärs under ena armen. Lätt att flytta från rälsen.
- Ihopfällbar i 3 delar, uppsättningstid under minuten. Inga skruvar eller muttrar.
- Inbyggd trippmätare som standard, noggrannhet mäts i promille.
- Elektriskt isolerade hjul.
- Vändbar
- Parkeringsbroms

Track gauge 1435 mm

SAFE 9625 Incl. Distance meter & basket

SAFE 9625b Excl. Distance meter & basket

Track gauge 1520-1524 mm

SAFE 9626 Incl. Distance meter & basket

SAFE 9626b Excl. Distance meter & basket



Load Scooter

Rail-Mounted Transporter with loading rack
Rälsspark med lastflak



Track gauge/ Spårbredd 1435 mm

SAFE 9620 LS

Track gauge/Spårbredd 1520-1524 mm

SAFE 96206 LS

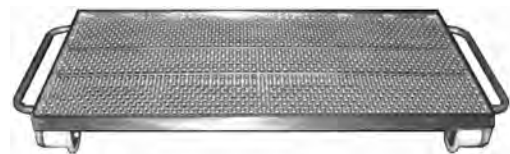
Total load 225 kg. Weight only 33 kg. Raised for passing points and road crossing. Separated easily in three parts by hand. Loading area 0,8 m².

Rälsspark som lastar totalt 225 kg. Enkelt delbar i tre delar. Väger endast 33 kg!
Upphöjd för att passera växlar och vägövergångar. 0,8 m² lastyta.



Aluminium Load Trolley Aluminium Lasttralla

SAFE 96603



Only 26 Kg (57 lb)!

Made of aluminum and weight no more than 26 kg (57 lb) and could take a load of 700 kg (1543 lb). Parking brake. Insulated rail wheels. Load space: 1620x800 mm

Trallan är tillverkad av aluminium, väger inte mer än 26 kg och lastar 700 kg. Parkeringsbroms. Isolerade rälshjul. Lastyta: 1620x800 mm

Accessories

96611 Handle

96612 Handle with Dead Mans brake system

96381 Steel reinforced wheels Ø96mm

96642 Umbrella bracket

57120 Umbrella, Translucent Ø2,5 m

57123 Umbrella, foldable Ø2 m

Tillbehör

96611 Handtag

96612 Handtag med Dödmansgrepp

96381 Stålförstärkt plasthjul Ø96mm

96642 Parasollfäste

57120 Arbetsparasoll, genomskinlig duk Ø2,5 m

57123 Arbetsparasoll, ledad Ø2 m

Track Pack 80 Safe9660TP80

Loadtrolley 96603

Handle 96611

Umbrella bracket 96642

Umbrella 57123

Track Pack 81 Safe 9660TP81

Loadtrolley 96603

Handle, Dead Mans brake system 96612

Umbrella bracket 96642

Umbrella 57123



Track Pack

Use our pre-selected kits, **Track Pack**, for appropriate configurations for Rail service.

Spar tid. Använd våra förvalda kit, **Track Pack**, lämpliga för Järnvägsindustrin.

Safely connecting the world ...



Trolleys



Catenary



Rail Instruments



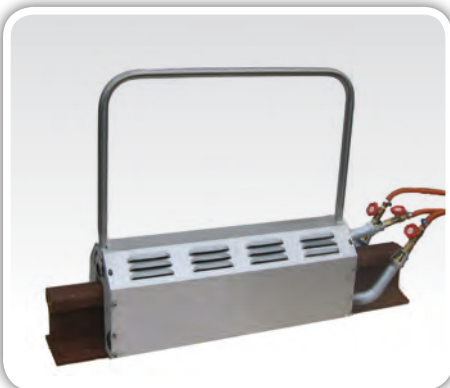
Rail Drilling



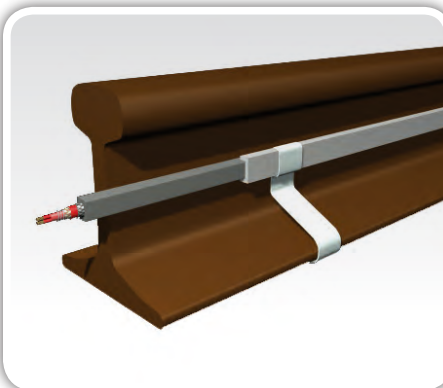
Rail Tools



Work Tents



Rail Heater



Rail Heating Systems



Welding Equipment



Signal Horns



Lightings

Safetrack Baavhammar AB

Möllebergavägen 339-24
245 93 Staffanstorp
Sweden

Tel. +46 (0)40 44 53 00
Fax. +46 (0)40 44 55 53
e-mail: sales@safetrack.se

www.safetrack.se